



# **VIOR GOLD CORPORATION**

## **CORPORATE PRESENTATION**

February 2026

TSXV: **VIO** · OTCQB: **VIORF** · FRANKFURT: **VL5**

# FORWARD-LOOKING STATEMENTS

## & Technical Content

Statements in this document, to the extent not based on historical events, constitute forward-looking statements. Forward-looking statements include, without limitation, statements evaluating market and general economic conditions in the following sections, and statements regarding future-oriented costs and expenditures.

Investors are cautioned not to place undue reliance on these forward-looking statements that reflect management's analysis only as of the date thereof.

These forward-looking statements are subject to certain risks and uncertainties that could cause actual results to differ materially. Such risks and uncertainties with respect to the company include the effects of general economic conditions, changing foreign exchange rates and actions by government authorities, uncertainties associated with legal proceedings and negotiations, industry supply levels, competitive pricing pressures and misjudgements in the course of preparing forward-looking statements.

The technical information in this presentation has been reviewed and approved by Pascal Simard, P.Eng., Vice-President Exploration, a non-independent qualified person as defined by National Instrument 43-101 (NI 43-101) Standards of Disclosure for Mineral Exploration Projects.

Historical results on the Ligneris Project described in this presentation are from public sources and the Qualified Person responsible for the review and approval of the technical information disclosed in this presentation (see details above) has not verified the information relating to these historical results. Consequently, such information is not necessarily indicative of mineralization on the Ligneris Project.

C A N A D A

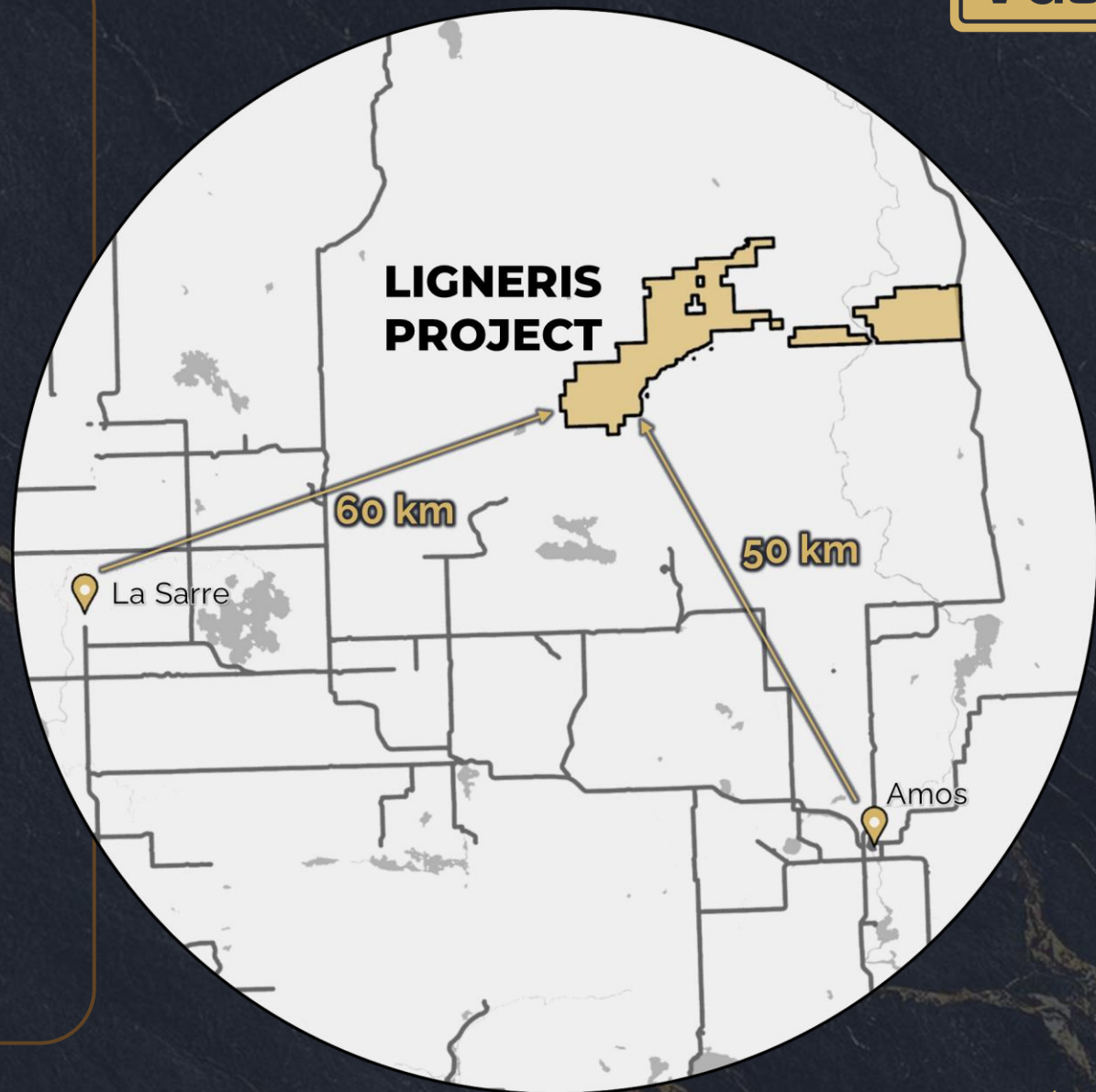
# UNLOCKING VALUE THROUGH DISCOVERIES



# LIGNERIS PROJECT

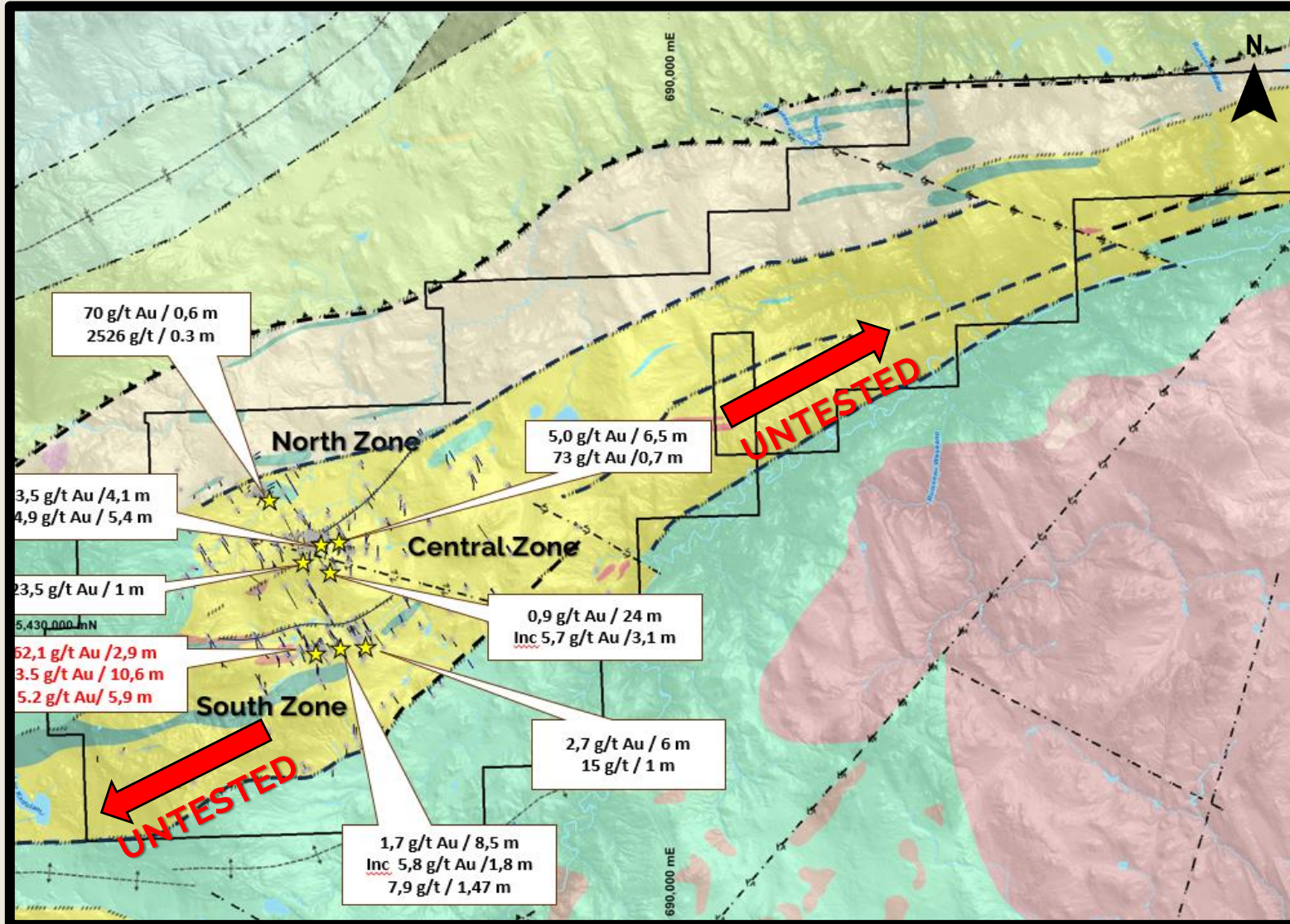
## Highlights & Opportunities

- 379 claims covering > 200 km<sup>2</sup>
- Excellent location and low-cost exploration.
- Located 100 km NE of Rouyn-Noranda, Québec.
- Orogenic Au and Gold-rich polymetallic VMS-related showings (Bousquet-LaRonde type deposits) untested at depth and along strike.
- Multiple new gold drilling targets.
- More than 40km along fertile felsic volcanic belt.
- Close to infrastructure.



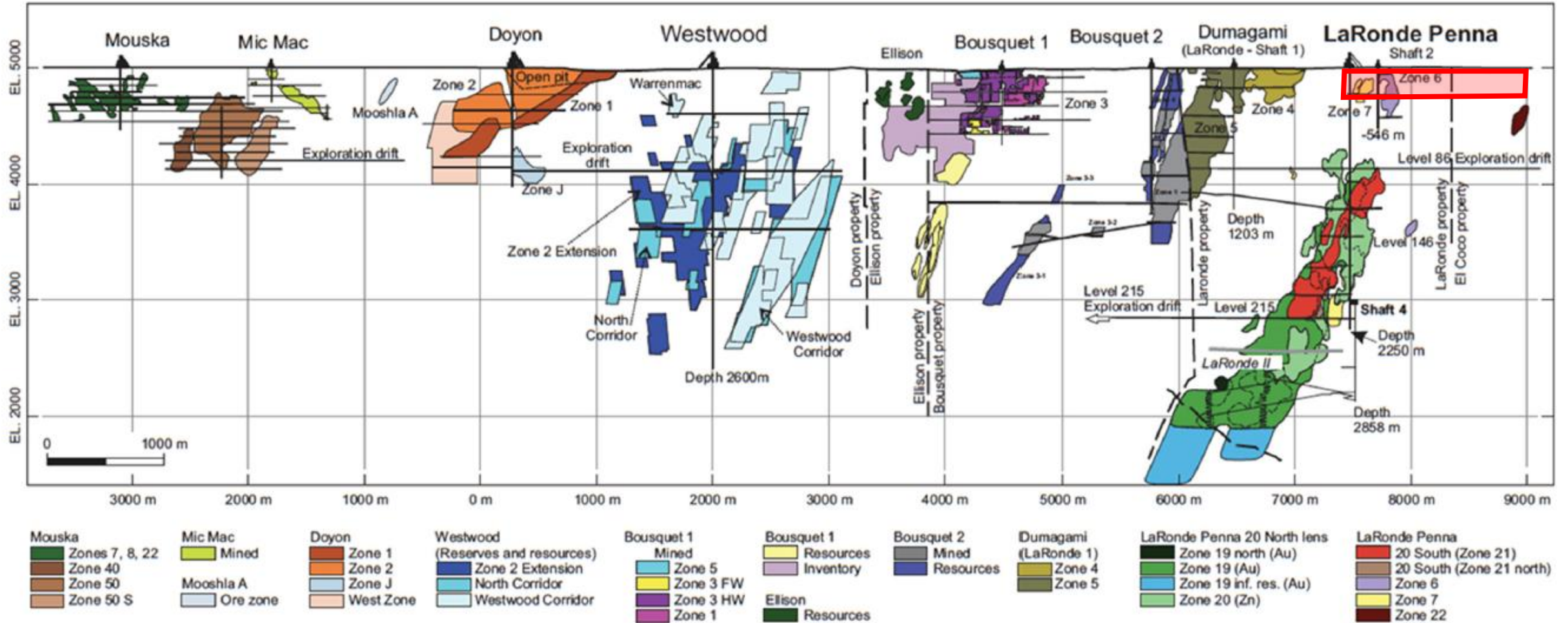
# LIGNERIS

## Historical Drilling Results



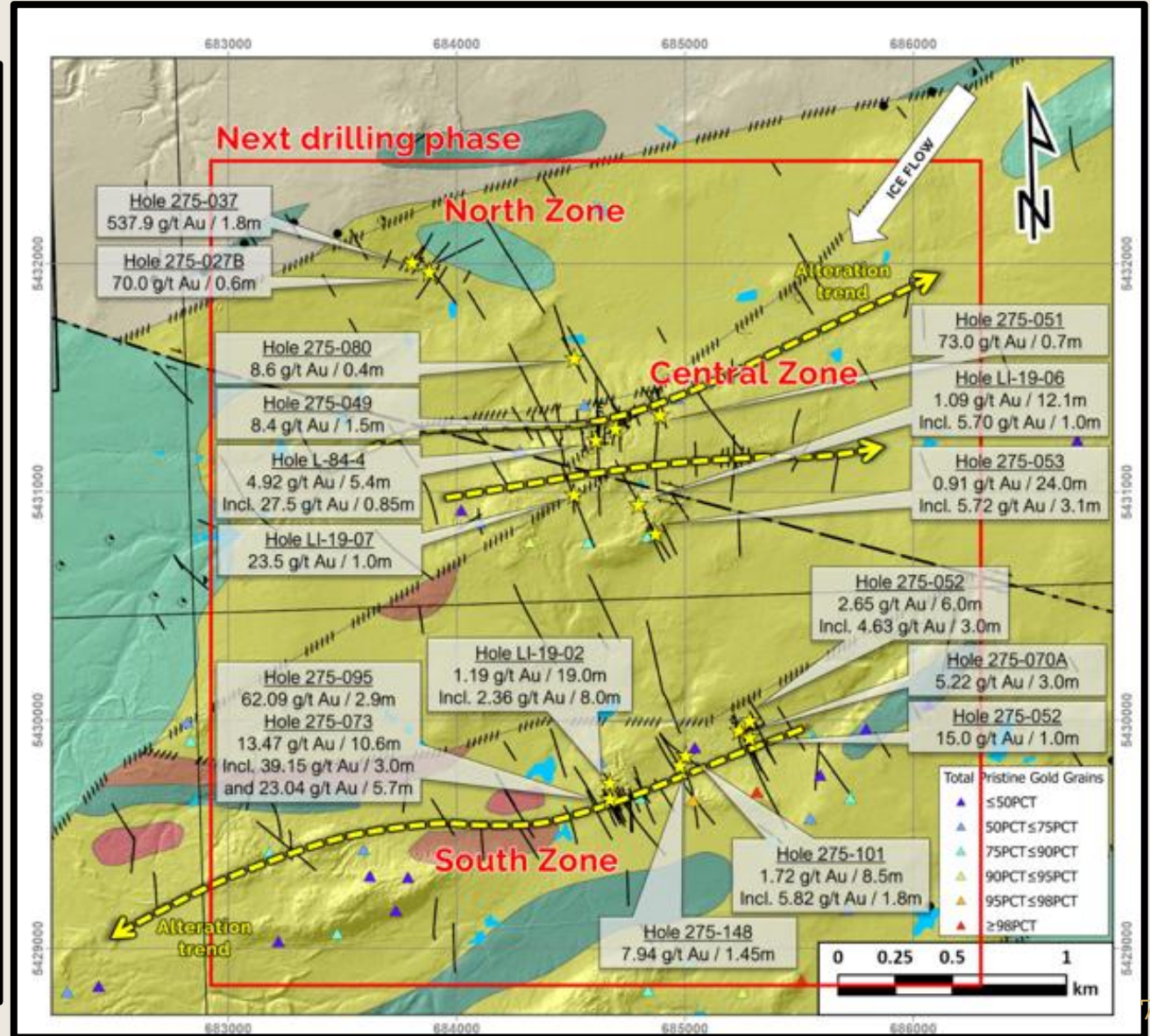
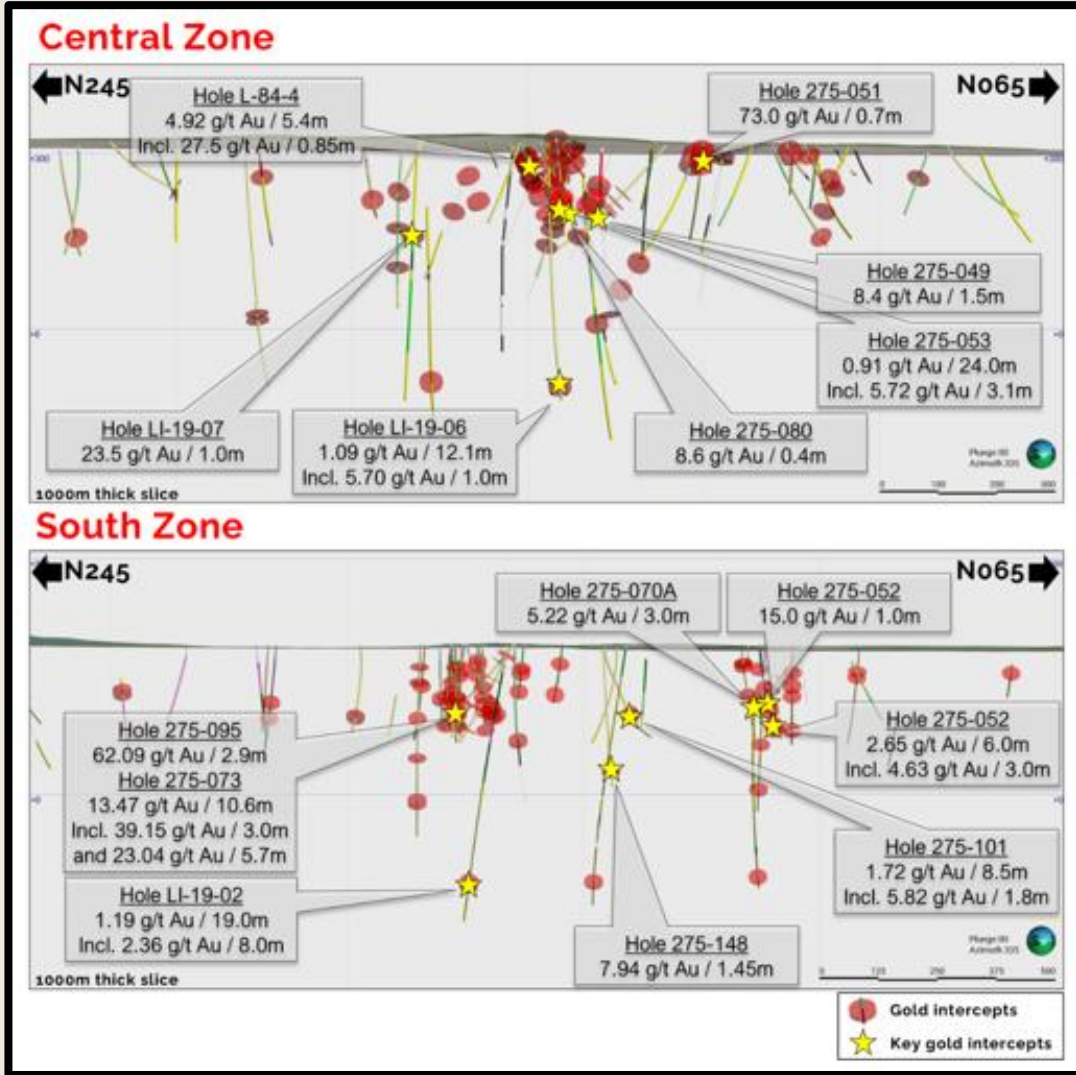
- Economical drilling intercepts that includes **13.5 g/t Au over 10.6 m.**
- Very little work carried out outside known areas.
- North and Central zones are dominated by Au-quartz veins (structurally controlled).
- South Zone shows similarities with Au-VMS type deposit (Laronde type).

# COMPARISON WITH DOYON-BOUSQUET-LARONDE CAMP

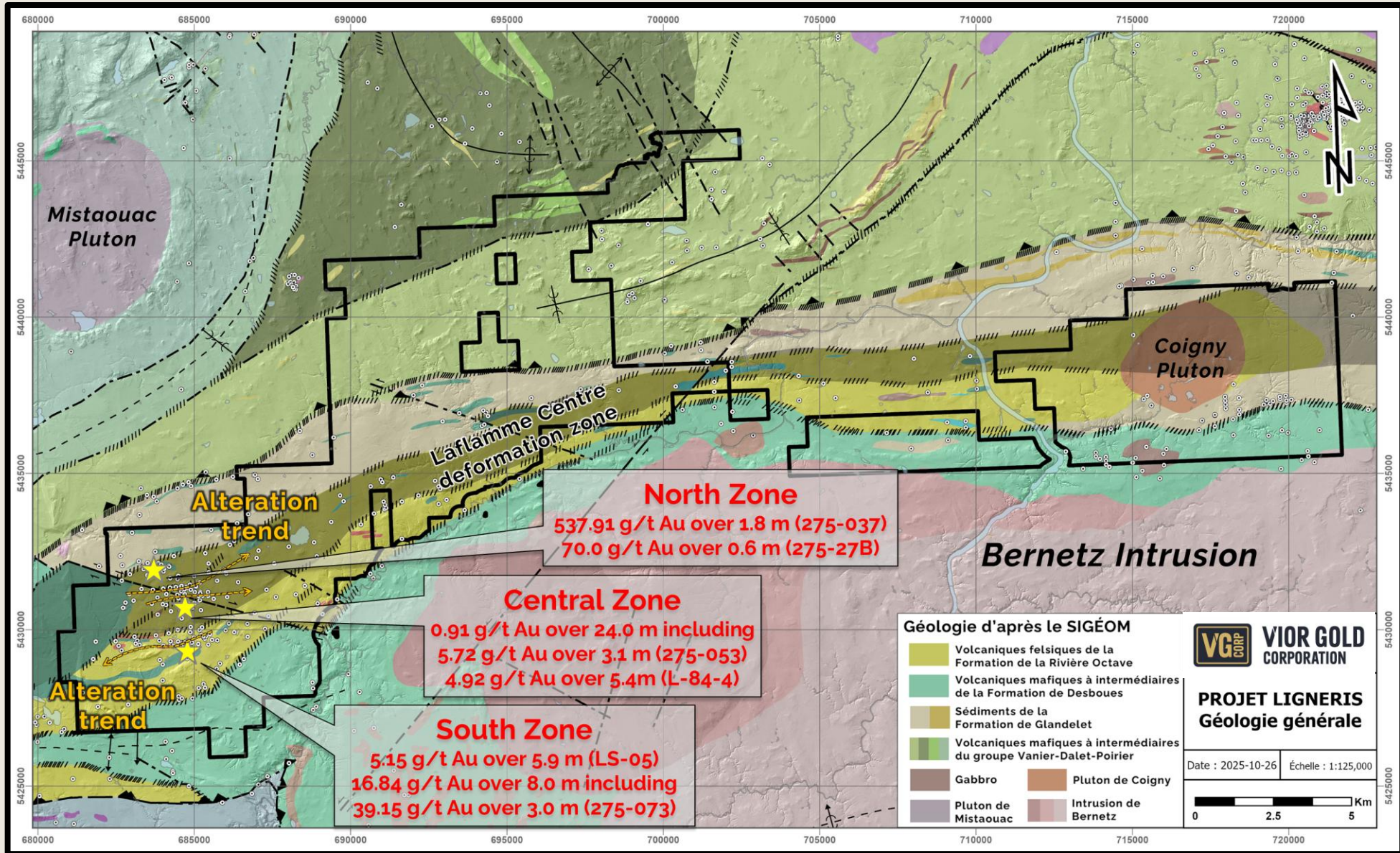


Composite longitudinal view (looking north) of the Doyon-Bousquet-LaRonde mining camp. The outlines of zones and lenses include production, reserves, and resources, including some historical, non-NI 43-101 compliant reserves and resources ( Modified from Mercier-Langevin et al., 2017).

# LIGNERIS PROJECT – LONG SECTIONS



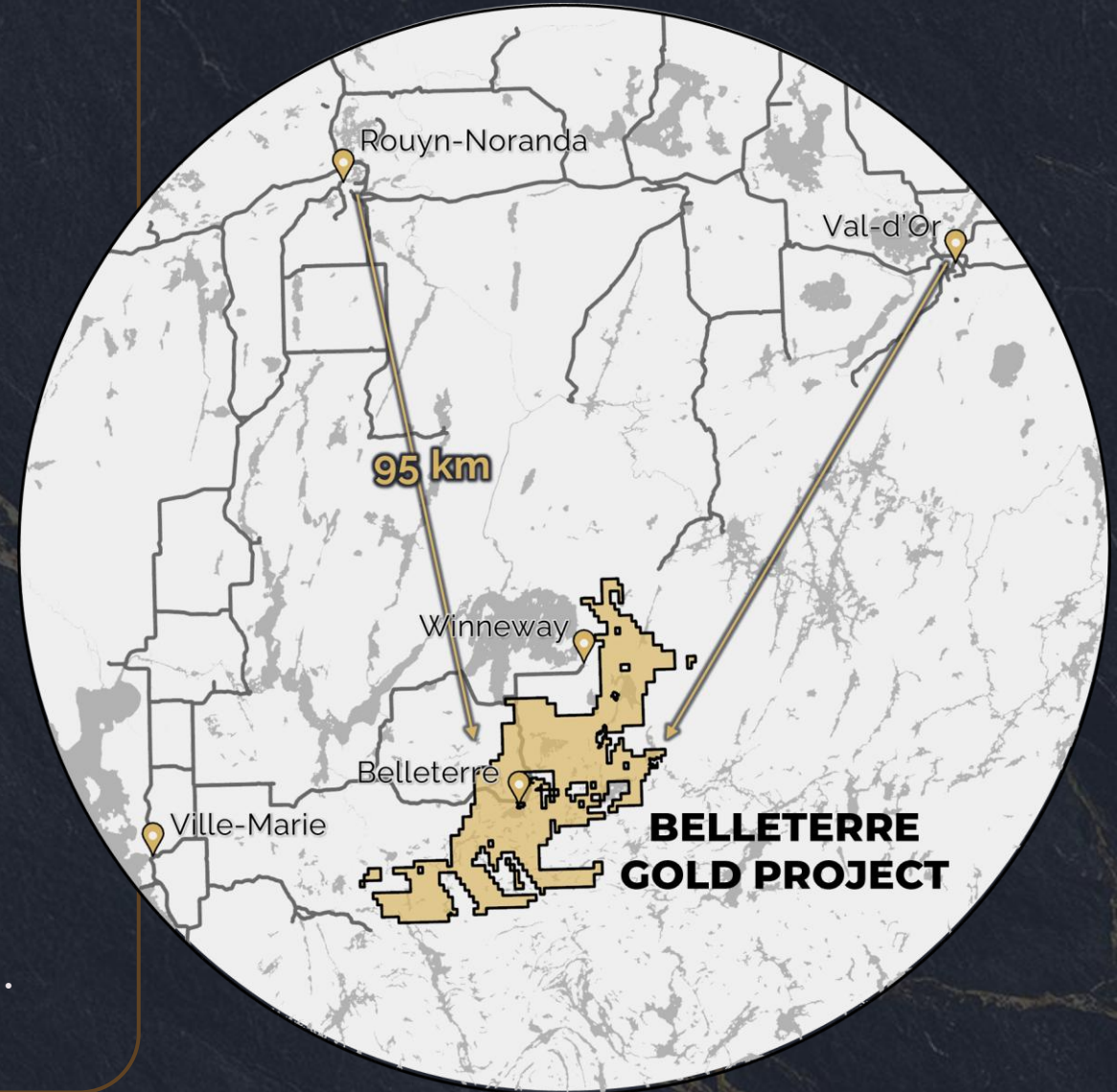
# LIGNERIS PROJECT



# BELLETERRE PROJECT

## Highlights & Opportunities

- 1,225 claims covering > 680 km<sup>2</sup>
- Historic high-grade Belleterre mine produced over 750,000 oz Au at 10.7 g/t (MERN).
- Gold system untested at depth and along strike.
- Excellent location and low-cost exploration.
- District scale with multi-deposit potential.
- Strategic support from gold producer.
- Close to infrastructure with low drilling cost.
- Exploration Agreement with Long Point First Nation.



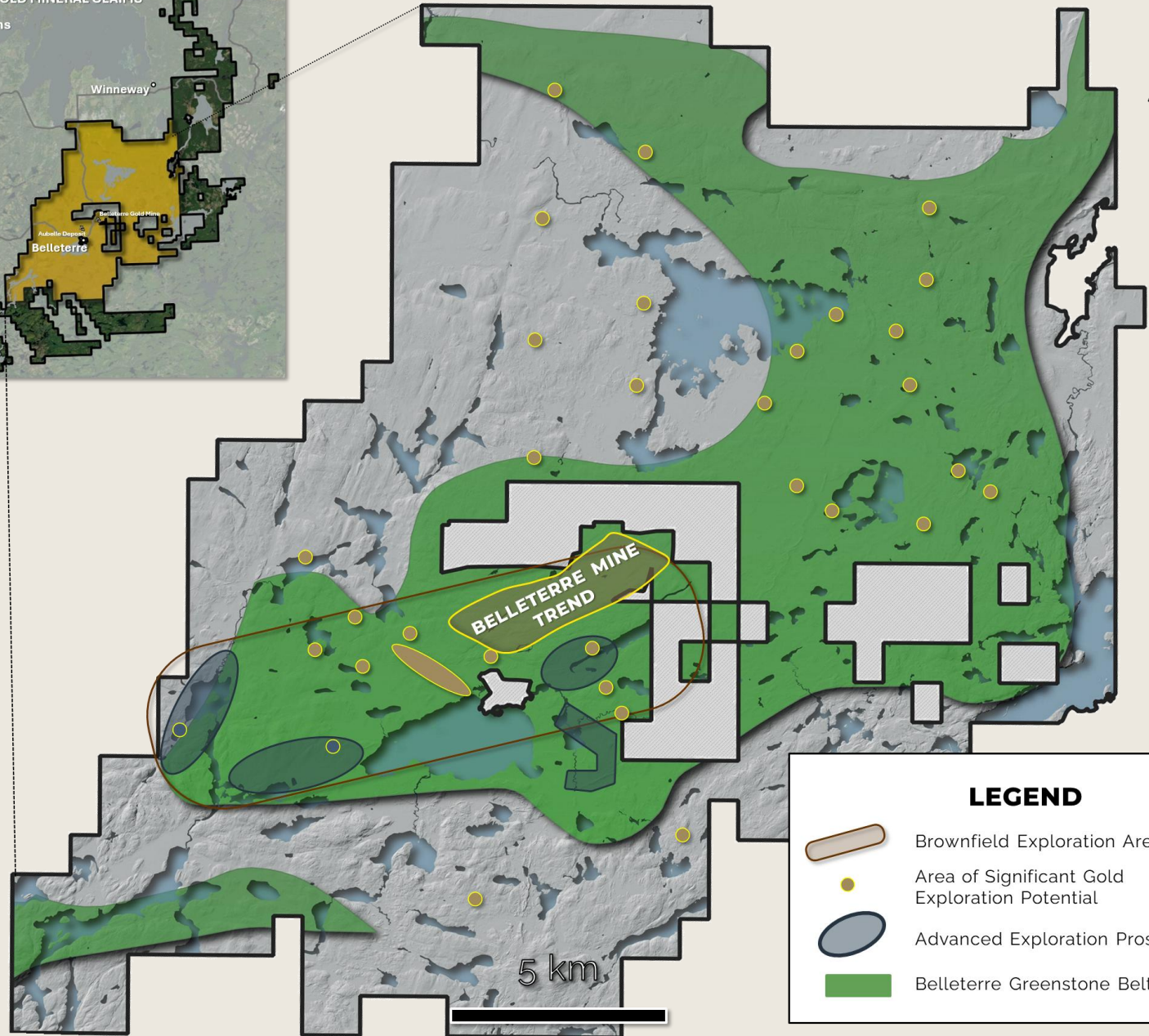
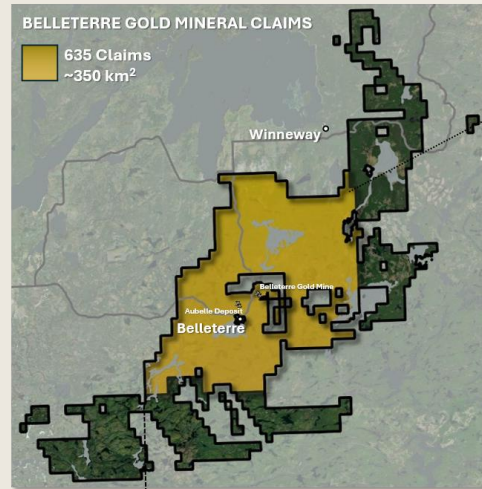
## BELLETERRE MINE

From 1939 to 1957, Belleterre Mine produced **2.18 M tons @ 10.73 g/t Au** (~750,000 oz Au)



# BELLETERRE PROJECT

DISTRICT-SCALE  
GOLD PROJECT  
1,225 claims over 700 km<sup>2</sup>

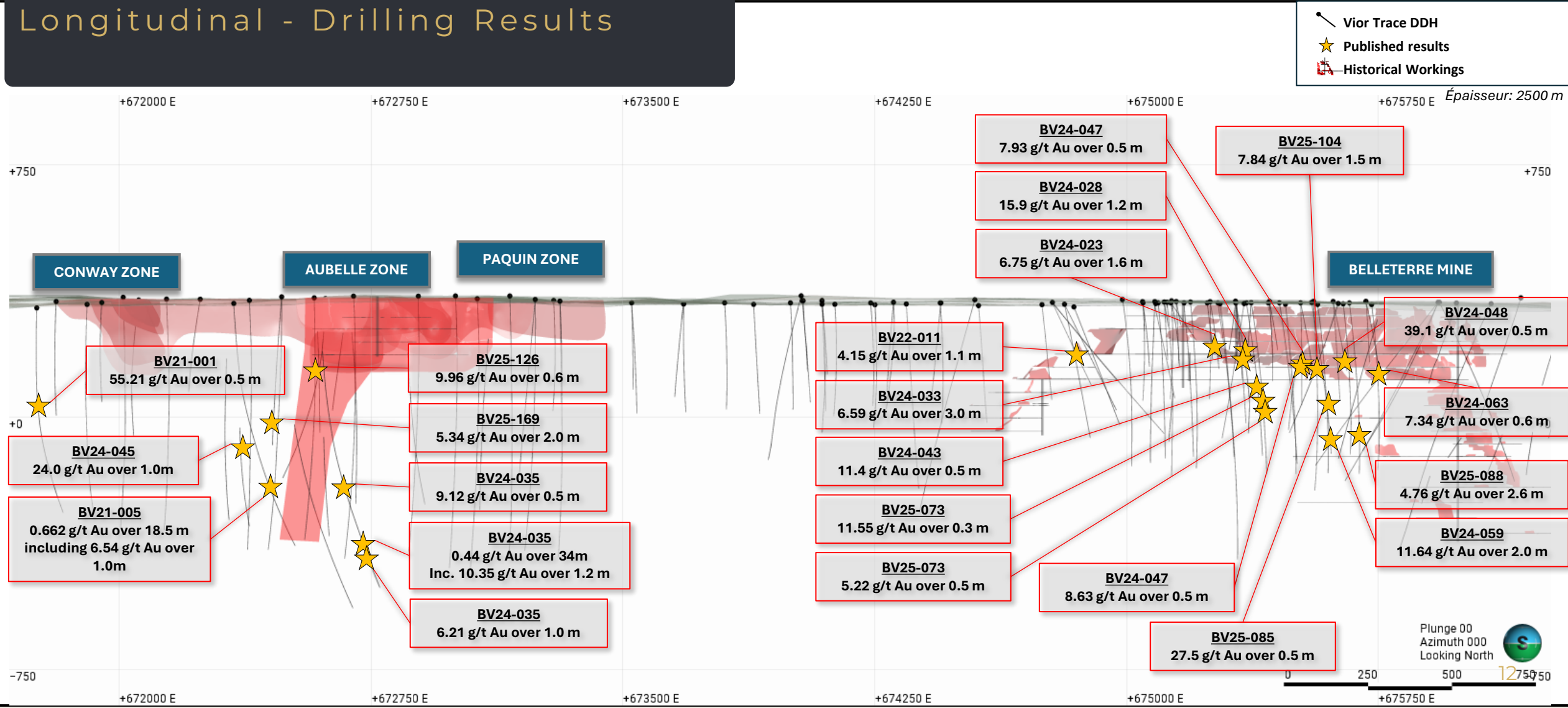


**LEGEND**

- Brownfield Exploration Area
- Area of Significant Gold Exploration Potential
- Advanced Exploration Prospect
- Belleterre Greenstone Belt

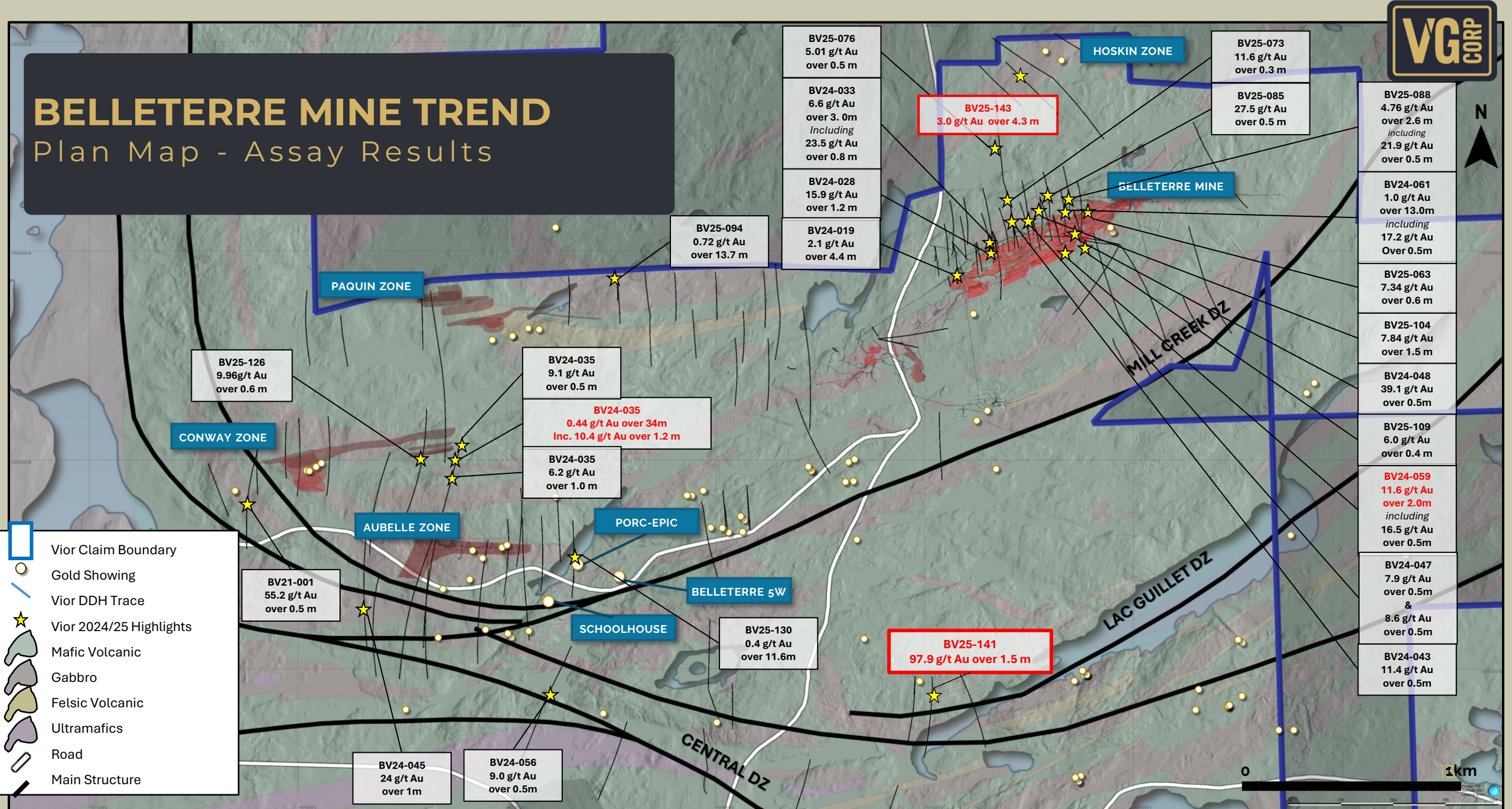
# BELLETERRE PROJECT

## Longitudinal - Drilling Results



# BELLETERRE MINE TREND

## Plan Map - Assay Results



BV25-076  
5.01 g/t Au  
over 0.5 m

BV24-033  
6.6 g/t Au  
over 3.0m  
Including  
23.5 g/t Au  
over 0.8 m

BV24-028  
15.9 g/t Au  
over 1.2 m

BV24-019  
2.1 g/t Au  
over 4.4 m

BV25-094  
0.72 g/t Au  
over 13.7 m

HOSKIN ZONE

BV25-073  
11.6 g/t Au  
over 0.3 m

BV25-085  
27.5 g/t Au  
over 0.5 m

BV25-088  
4.76 g/t Au  
over 2.6 m  
including  
21.9 g/t Au  
over 0.5 m

BV24-061  
1.0 g/t Au  
over 13.0m  
including  
17.2 g/t Au  
Over 0.5m

BV25-063  
7.34 g/t Au  
over 0.6 m

BV25-104  
7.84 g/t Au  
over 1.5 m

BV24-048  
39.1 g/t Au  
over 0.5m

BV25-109  
6.0 g/t Au  
over 0.4 m

BV24-059  
11.6 g/t Au  
over 2.0m  
including  
16.5 g/t Au  
over 0.5m

BV24-047  
7.9 g/t Au  
over 0.5m  
&  
8.6 g/t Au  
over 0.5m

BV24-043  
11.4 g/t Au  
over 0.5m

BV25-143  
3.0 g/t Au  
over 4.3 m

BELLETERRE MINE

PAQUIN ZONE

BV25-126  
9.96g/t Au  
over 0.6 m

CONWAY ZONE

BV24-035  
9.1 g/t Au  
over 0.5 m

BV24-035  
0.44 g/t Au over 34m  
Inc. 10.4 g/t Au over 1.2 m

BV24-035  
6.2 g/t Au  
over 1.0 m

AUBELLE ZONE

BV21-001  
55.2 g/t Au  
over 0.5 m

PORC-EPIC

BELLETERRE 5W

SCHOOLHOUSE

BV25-130  
0.4 g/t Au  
over 11.6m

BV25-141  
97.9 g/t Au  
over 1.5 m

MILL CREEK DZ

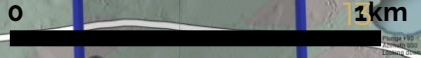
LAC GUILLET DZ

CENTRAL DZ

BV24-045  
24 g/t Au  
over 1m

BV24-056  
9.0 g/t Au  
over 0.5m

- Vior Claim Boundary
- Gold Showing
- Vior DDH Trace
- Vior 2024/25 Highlights
- Mafic Volcanic
- Gabbro
- Felsic Volcanic
- Ultramafics
- Road
- Main Structure



# NEW MINERALIZATION STYLE

Mineralization Associated with the Devlin Intrusion (Conway area)



**Disseminated Pyrite  
in felsic intrusive  
rock crosscutted by  
Qtz Vn**



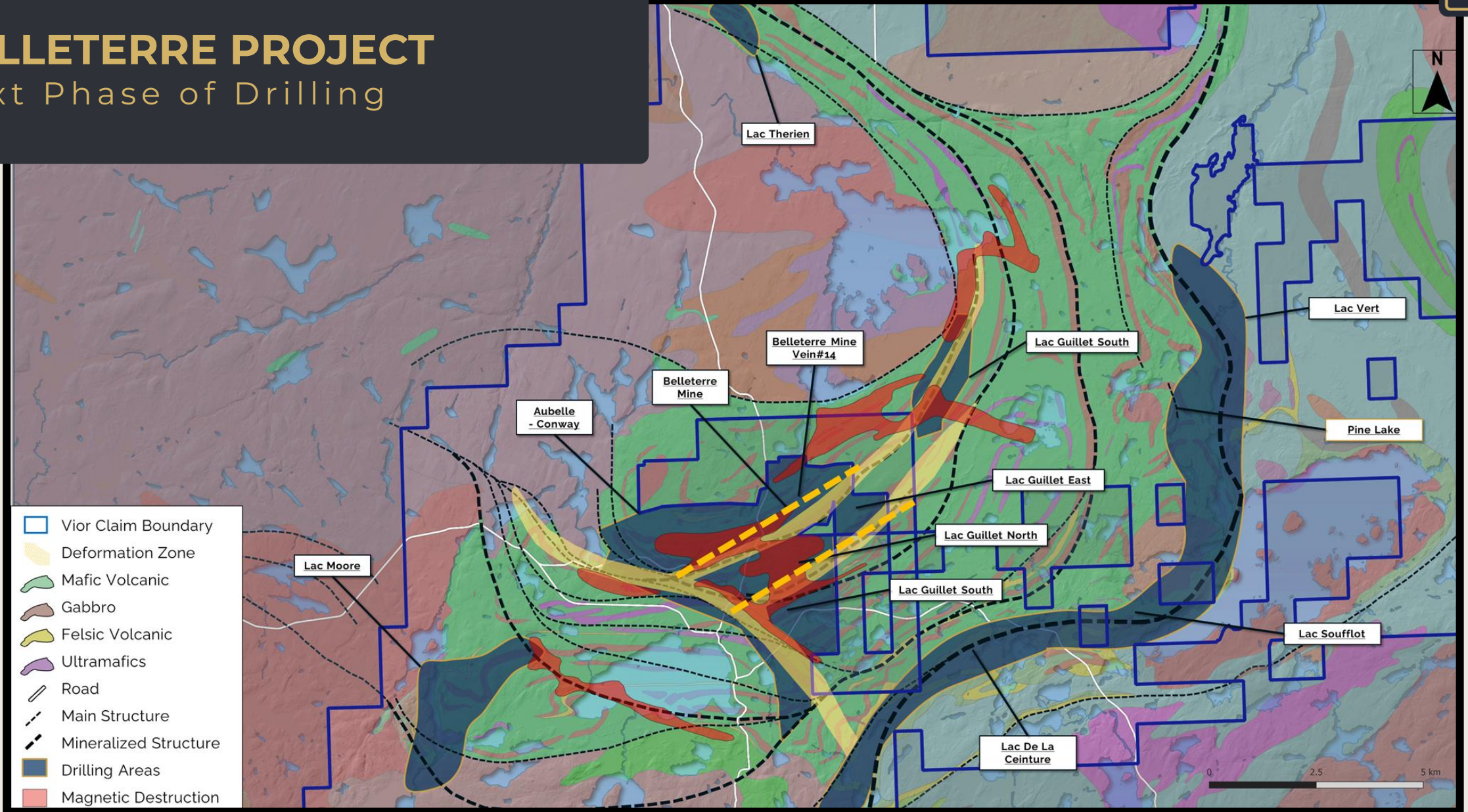
**BV24-035 - 0.435 g/t Au over 34 m**



**BV24-035 - 10.35 g/t Au over 1.2 m**

# BELLETERRE PROJECT

## Next Phase of Drilling



# CORPORATE PROFILE

## BOARD OF DIRECTORS

**MATHIEU SAVARD**  
President & CEO



**CHARLES-OLIVIER TARTE**



**MARK FEDOSIEWICH**  
Chairman



**ANDRE LE BEL**



**DON NJEGOVAN**



**JOHAN POOL**



## MANAGEMENT

**MATHIEU SAVARD**, President & CEO

**PASCAL SIMARD**, Vice President Exploration

**INGRID MARTIN**, Chief Financial Officer

**SHAYAAN BELLUZZO**, Corporate Secretary

## TECHNICAL TEAM

**ROSE ANNE BOUCHARD**, P.Eng., Exploration Manager

**CHRISTIAN BLANCHET**, P.Geo., Operations Manager

**MATHIEU GUAY**, P.Geo., Geology Manager

# CORPORATE STRUCTURE

+ WORKING CAPITAL

**\$46M<sup>(1)</sup>**

Adjusted Working Capital

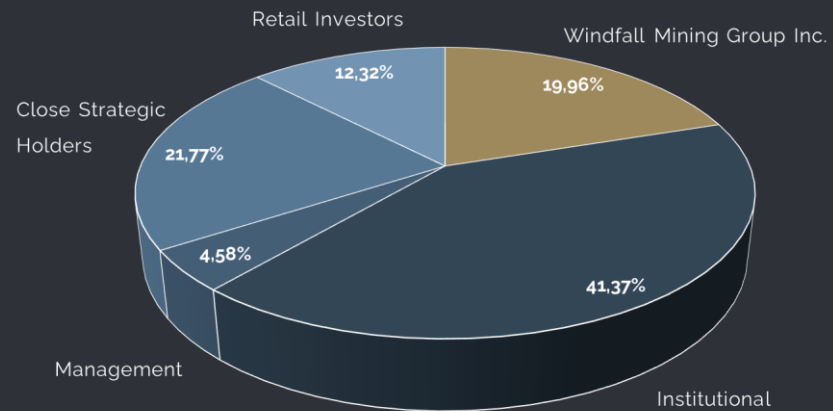
**415M**

Shares Outstanding

**\$49.8M**

Market Capitalization (\$0.12/share)

## SHAREHOLDERS



Note 1: : The "adjusted working capital" on September 30, 2025 is a non-IFRS measure that includes cash and non-current investments (GIC) and excludes listed shares as well as the liability related to the premium on flow-through shares.



## CORPORATE PROFILE

### VALUE BASED ON STRONG FUNDAMENTALS

Unlocking Value  
Through Discoveries



### SAFE JURISDICTION

**Québec**

Amongst world's top mining jurisdictions

### TEAM WITH PROVEN TRACK RECORD

**Management and Technical Team**

Track record of World Class Gold Discoveries

### STRONG FINANCIALS AND TECHNICAL PARTNERS

**Fully Funded**

Windfall Mining Group Inc., FSTQ, SIDEEX, NQ Investment

### DISTRICT SCALE

Projects with multi-deposit potential at district scale

## 2026 CATALYSTS

### Unlocking Value Through Discoveries

- ✓ **20,000 metres of drilling at Ligneris.**
- ✓ **Completion of drilling program at Belleterre in Q1-2026.**
- ✓ **Addition of district scale projects to the portfolio.**



## CONTACT US

---

**Mathieu Savard**  
President and CEO  
[msavard@vior.ca](mailto:msavard@vior.ca)

**vior.ca**



**TSXV: VIO**  
**OTCQB: VIORF**  
**FRANKFURT: VL5**