

VIOR INC.

JUNIOR MINING EXPLORER



TSXV - VIO • OTCQB - VIORF • FRANKFURT - VL51

Corporate Presentation

January 2024



Because we're a responsible company, here's the legal

Statements in this document, to the extent not based on historical events, constitute forward-looking statements. Forward-looking statements include, without limitation, statements evaluating market and general economic conditions in the preceding sections, and statements regarding future-oriented costs and expenditures.

Investors are cautioned not to place undue reliance on these forward-looking statements, which reflect management's analysis only as of the date thereof.

These forward-looking statements are subject to certain risks and uncertainties that could cause actual results to differ materially.

Such risks and uncertainties with respect to the company include the effects of general economic conditions, changing foreign exchange rates and actions by government authorities, uncertainties associated with legal proceedings and negotiations, industry supply levels, competitive pricing pressures and misjudgements in the course of preparing forward-looking statements.



Corporate Profile



**VALUE BASED ON
STRONG FUNDAMENTALS**

STRATEGY

**Exposure to High
Potential Gold &
Critical
Mineral Discoveries**

A Discovery is the Key driver for value creation in an industry known for a low rate of exploration success.

SAFE JURISDICTIONS

Quebec

Jurisdictions ranking at the top of Fraser Institute Survey 2022.

STRONG FINANCIAL & TECHNICAL PARTNERS

**Osisko Mining, SOQUEM,
FSTQ, SIDEX, SDBJ,
Desjardins, CDPQ**

EXPERTISE

**Committed Management
& Technical Team**

100+ years' experience in the industry
~14% equity position ownership

DIVERSIFICATION

**Diversified Portfolio of
Exploration Projects**

Corporate Profile

BOARD OF DIRECTORS

Independent

CLAUDE ST-JACQUES - Chairman

FOUNDER



MARK FEDOSIEWICH - President & CEO



Independent

ÉRIC DESAULNIERS

FOUNDER



Independent

CHARLES-OLIVIER TARTE



PASCAL SIMARD



MANAGEMENT

MARK FEDOSIEWICH – President & CEO

LAURENT EUSTACHE – Executive VP

INGRID MARTIN – CFO

TECHNICAL TEAM

CHAD PETERS, P.Geo. - Technical Advisor

MARC L'HEUREUX, P.Geo. - Technical Advisor

BEN CLELAND, P.Geo. - Senior Exploration Manager

CHRISTIAN BLANCHET, P.Geo. - Operations Manager

MATHIEU GUAY, P.Geo. - Geology Manager

BY THE NUMBERS

Working Capital * \$3.59 M

Includes liability premium on FT shares

Shares Outstanding * 101,990,731

Market Capitalization \$13.769 M
@ \$0.135/share

Major Shareholders

Osisko Mining Inc. ~ 14.1%

Partially Diluted ~ 14.7 %

Management ~ 14.0%

Quebec Institutions ~ 16.7%

Close Strategic Holders ~ 22.0%



* As of September 30, 2023



Asset Allocation & Diversification

Exposure to Major Exploration Projects in North America

FOCUS ON PRECIOUS METALS & CRITICAL/STRATEGIC METALS

RIGOROUS PROJECT GENERATION CRITERIA

Potential, Location, Project Size &
Access, Community/First Nations Relations

DISCIPLINE & FOCUS

Limitations of Capital and **Human Resources**

VIOR – Operations

VIOR CAPITAL ALLOCATION

Québec

BELLETERRE

**GOLD - Drill ready
LITHIUM - Greenfield**

PARTNERSHIP WITH 

Québec

SKYFALL

**NICKEL - Greenfield
GOLD - Greenfield**

VIOR – Diversification

SEEKING PARTNERS

Québec

PROJECT PORTFOLIO

ADVANCED	Mosseau - GOLD
	Ligneris - GOLD
INTERMEDIATE	Veza-Noyard - GOLD
	Foothills - PHOSPHATE
GREENFIELD	

PASSIVE STRATEGY

Nevada

STRATEGIC INVESTMENT



RDG-V
VIOR owns 3.642 M Shares

BELLETERRE GOLD PROJECT

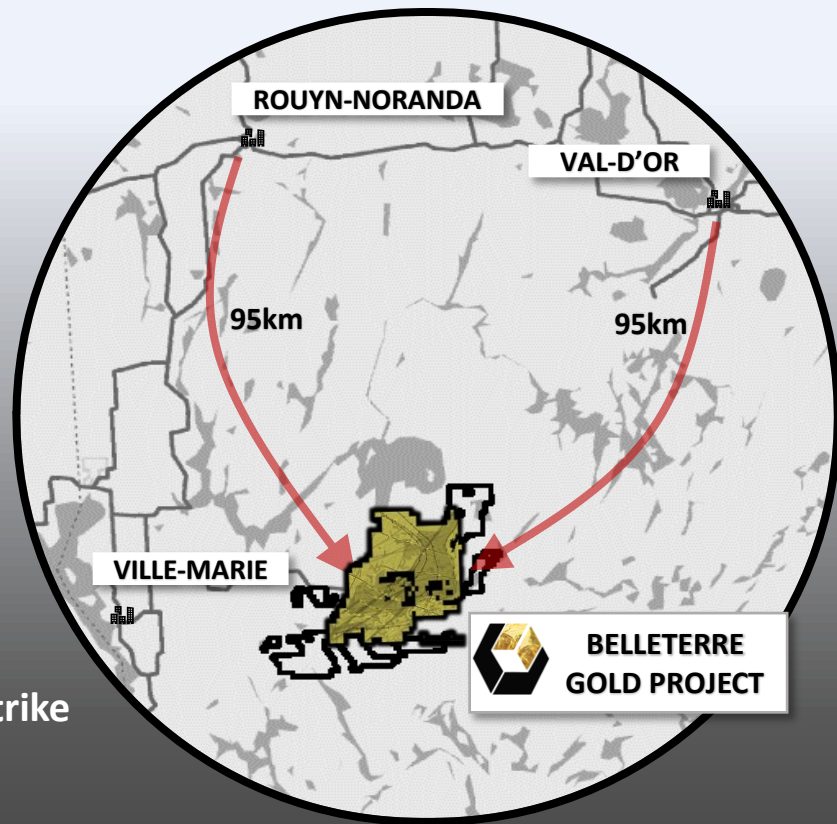
**A Potential Major Gold
Discovery in Québec ...**



Belleterre Gold Project

Highlights & Opportunity

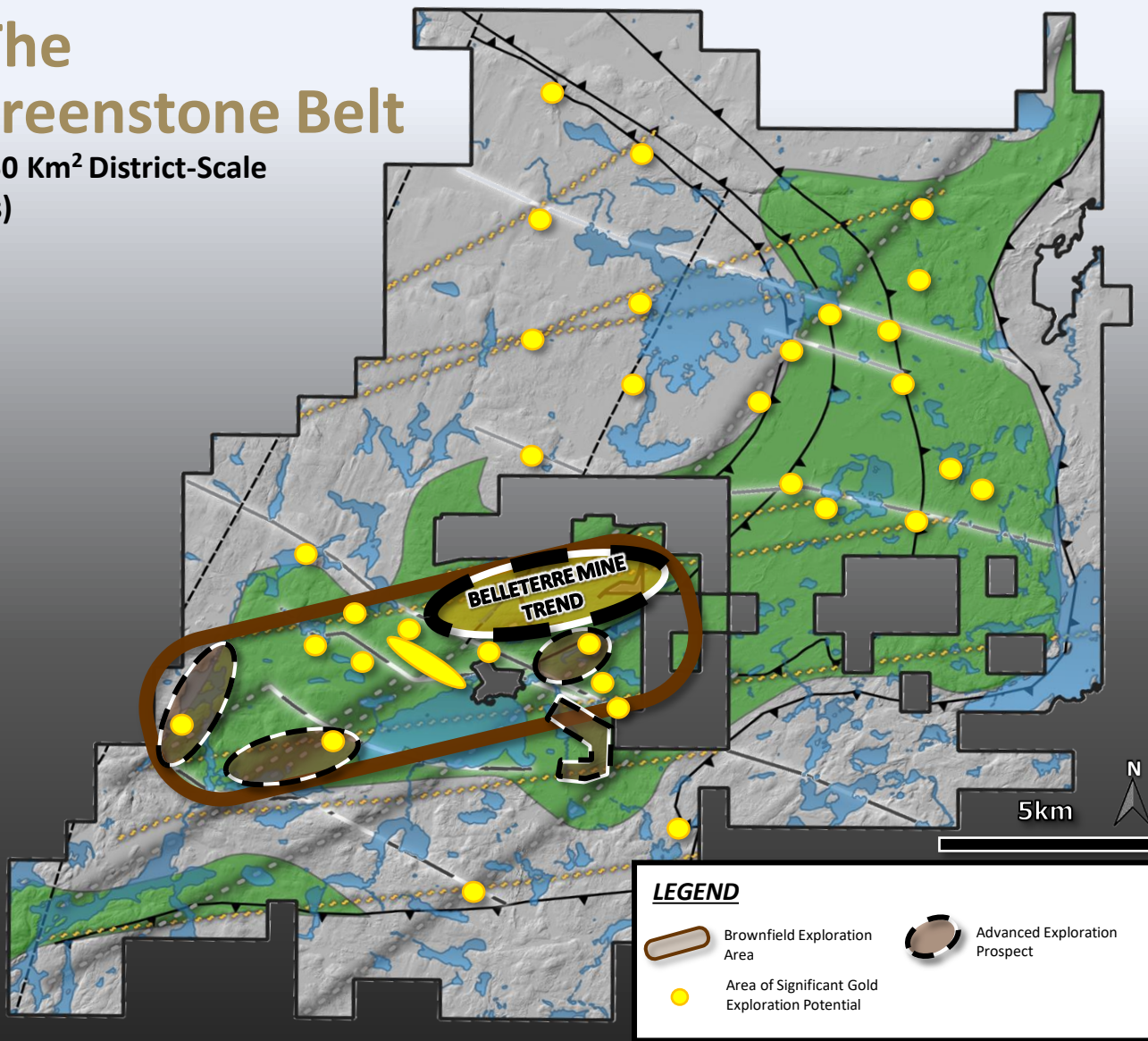
- Past producing high-grade Belleterre gold mine
 - ~800K oz Au @ 10.7 g/t (MERN)
- Excellent location & low-cost exploration
- High-grade gold system untested at depth & along strike
- District scale with multi-deposit potential
- Osisko Mining Inc. strategic support
- Drill ready with proposed +30,000m program





Control Of The Belleterre Greenstone Belt

The Foundation of a +350 Km² District-Scale Opportunity (621 claims)





Belleterre Gold Project Brownfield Map

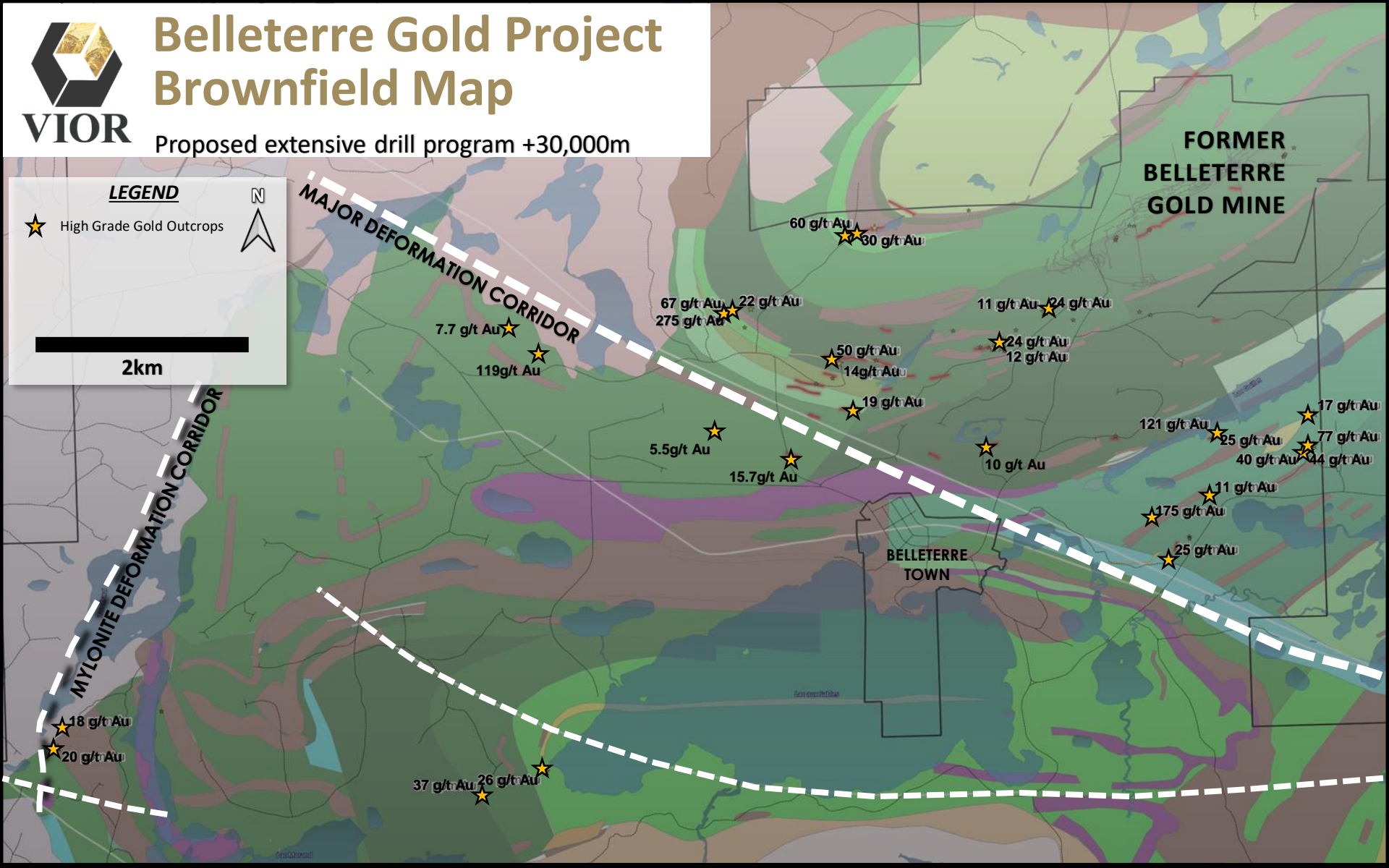
Proposed extensive drill program +30,000m

LEGEND

★ High Grade Gold Outcrops



2km





Belleterre Gold Project Brownfield Map

Proposed extensive drill program +30,000m

LEGEND

★ High Grade Gold Outcrops

Advanced DDH Targets

Advanced Exploration Prospect

2km



MAJOR DEFORMATION CORRIDOR

MYLONITE DEFORMATION CORRIDOR

LAC PARADIS

RIVARD SAVARD

GUILLET MINE

PAQUIN VEIN

CONWAY VEIN

AUBELLE DEPOSIT

BELLETERRE
MINE TREND

BT#9
VEIN

QFP-A

BELLETERRE
TOWN

LAC AUX SABLES EAST
& ULTRAMAFIC
HORIZON

HOSKING
VEIN

FORMER
BELLETERRE
GOLD MINE

6-7km

60 ppm Au

67 ppm Au
275 ppm Au

50 ppm Au

11 ppm Au

24 ppm Au

19 ppm Au

124 ppm Au

11 ppm Au

175 ppm Au

25 ppm Au

17 ppm Au

25 ppm Au

77 ppm Au

40 ppm Au

44 ppm Au

18 ppm Au

20 ppm Au

37 ppm Au

26 ppm Au



Belleterre Gold The Next Potential Discovery...

Belleterre Mine Trend Long section – North View

HIGH-GRADE GOLD AT SURFACE
UP TO 275 g/t Au

PAQUIN DEPOSIT

CONWAY DEPOSIT

AUBELLE DEPOSIT

PAST PRODUCTION
~800K oz Au @ 10.7 g/t (MERN)

BELLETERRE GOLD MINE

Surface

500m

1000m

1500m

2000m

2500m

OPEN

OPEN

OPEN

LEGEND



Vior - Gold Intersects



Historic Deposits



Potential Extensions

Drill Target Areas

Upside potential at depth and in unexplored areas

6-7KM



Belleterre Gold Mine

Cross Section (West View)

Surface

LEGEND



Historic deposits & Workings



Projected Vein #12

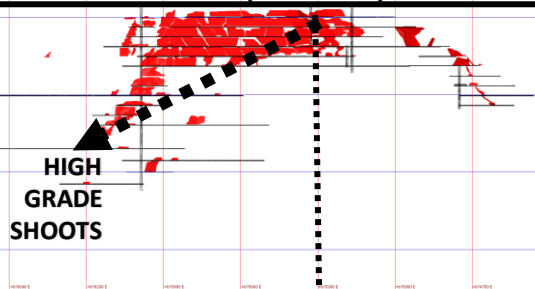


Potential Stacked Veins



Felsic Intrusive

Belleterre Mine – Infinite Long Section (South view)



500m

1000m

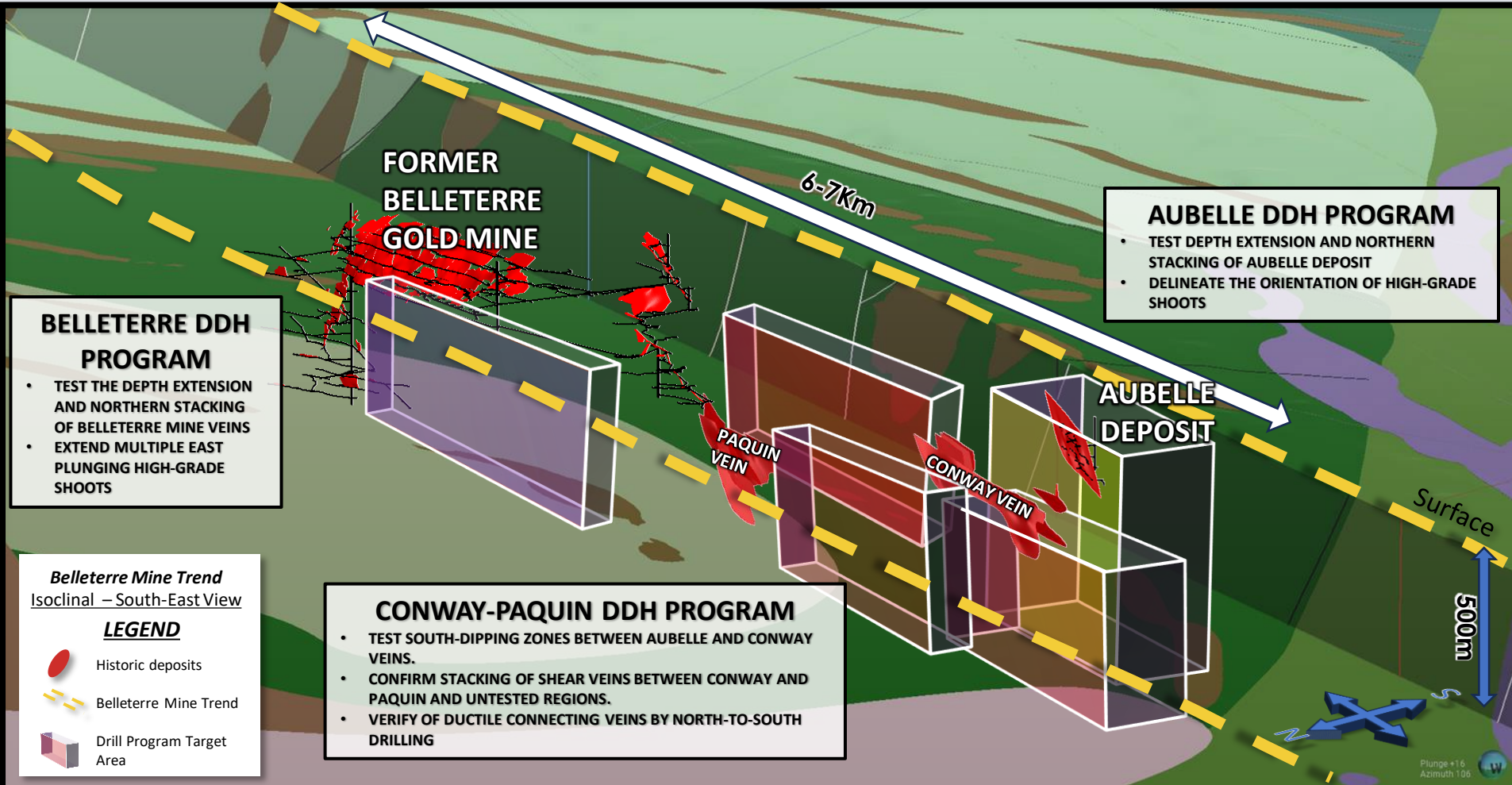
Vein #12

MYLONITE DEFORMATION STRUCTURE

- 1) GOLD SYSTEM EXTENSION AT DEPTH
- 2) GOLD CORRELATION TO FELSIC INTRUSIVE
- 3) STACKING OF GOLD VEINS
- 4) HIGH GRADE MINERALIZATION SHOOTS
- 5) MAJOR MYLONITE STRUCTURE

Belleterre Mine Trend

Primary DDH Target Locations

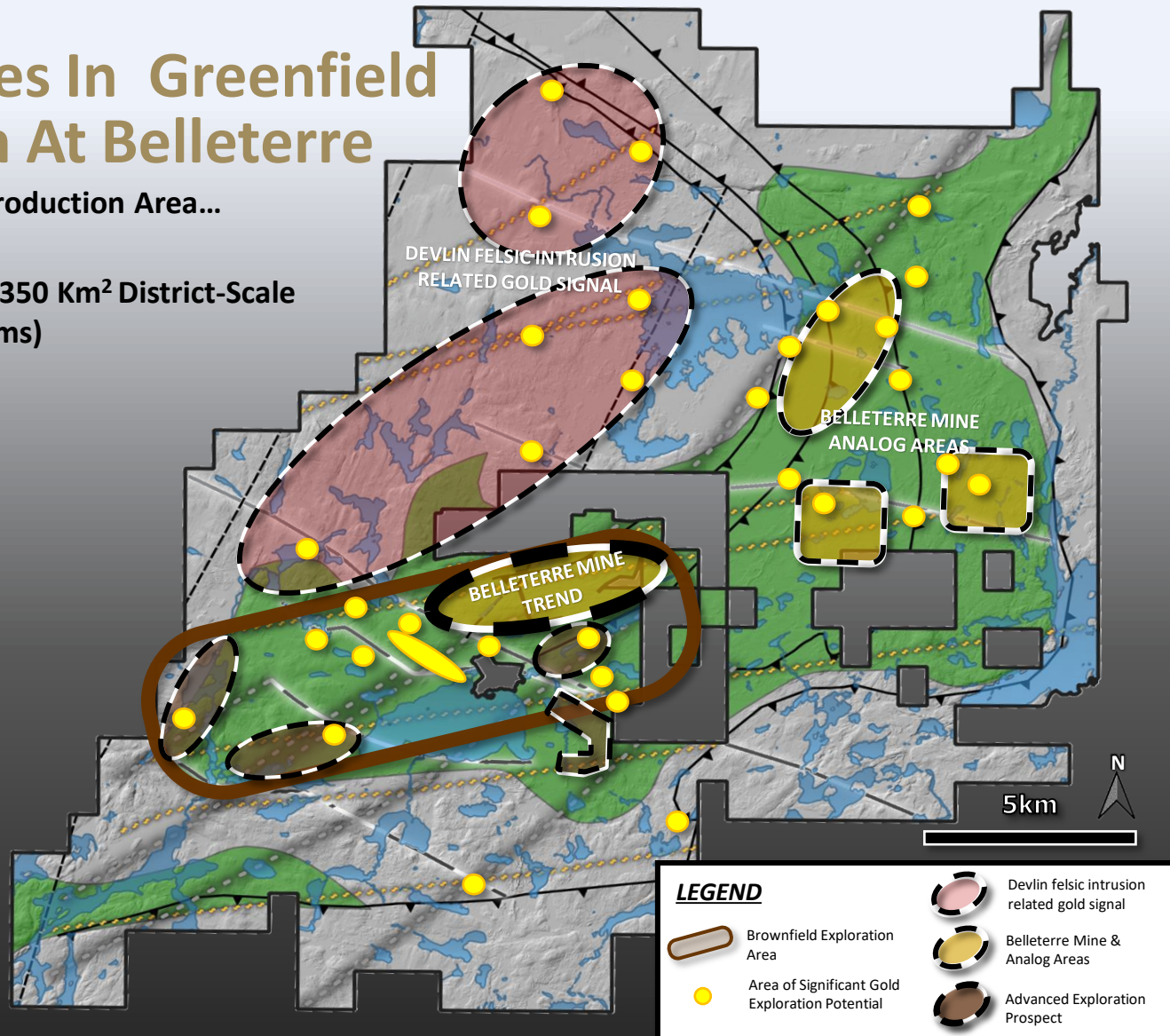






Optionalities In Greenfield Exploration At Belleterre

Beyond The Former Production Area...

The Foundation of a +350 Km² District-Scale Opportunity (621 claims)



LEGEND

-  Brownfield Exploration Area
-  Area of Significant Gold Exploration Potential

-  Devlin felsic intrusion related gold signal
-  Belleterre Mine & Analog Areas
-  Advanced Exploration Prospect



The Vior Investment Opportunity

SOLID FOUNDATION

- ✓ Low-cost Corporate Structure
- ✓ Large Insider share ownership
- ✓ Exposure to multiple High Potential Projects in Quebec & Nevada

PROVEN STRATEGY

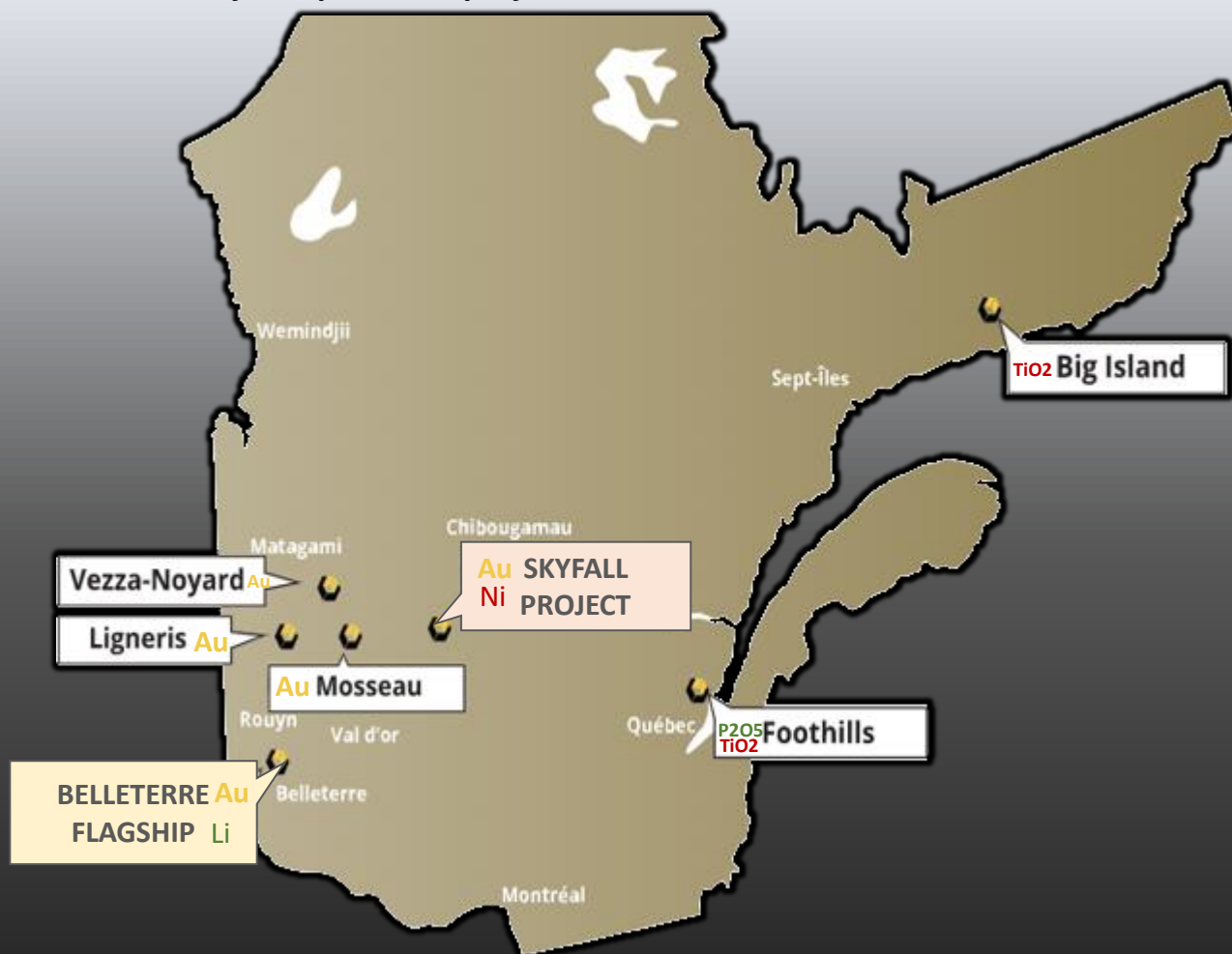
- ✓ Significant new Discovery Potential
 - Belleterre Gold
 - Skyfall Nickel
 - Foothills Phosphate/Titanium
- ✓ Osisko Mining Inc's Endorsement



- ❖ **Belleterre Gold** - Rapidly Advancing
 - ✓ *Finalize DDH GOLD targets for an AGGRESSIVE 30,000m DRILL PROGRAM*
- ❖ **Skyfall Nickel** – Greenfield district-scale Ni potential
 - ✓ *Rapidly Advancing with the \$2.5M Option with SOQUEM*
- ❖ **Foothills** – *Excellent district-scale Rutile and Phosphate potential*
 - ✓ *Over 16.5 km of proven mineralized horizons*
 - ✓ *Spring 2024 field validation program, metallurgy testing and drill targeting*
- ❖ **Belleterre Critical Minerals (Lithium)** – Rapidly Advancing
 - ✓ *2023 Comprehensive field validation program confirmed potential for Pegmatite swarms*

Projects – Overview

Exposure to other major exploration projects in Quebec





Appendix



TSXV – VIO
OTC – VIO RF
FRA – VL51



Belleterre Gold Project

One of the last historic high-grade gold mining camps in the Abitibi Greenstone Belt that is still under-explored...

PROVEN MINING BELT

- Past Producing Belleterre Gold Mine -800Koz Au @ 10.7g/t Au (MERN)

- Up to 20 known High-Grade Gold Veins

PROVEN VALUE CREATION STRATEGY

M&A ACTIVITIES from previous consolidated past producing camps:

- Osisko (Cdn. Malartic mine)
- Detour Gold (Detour mine)
- Integra (Lamaque mine)

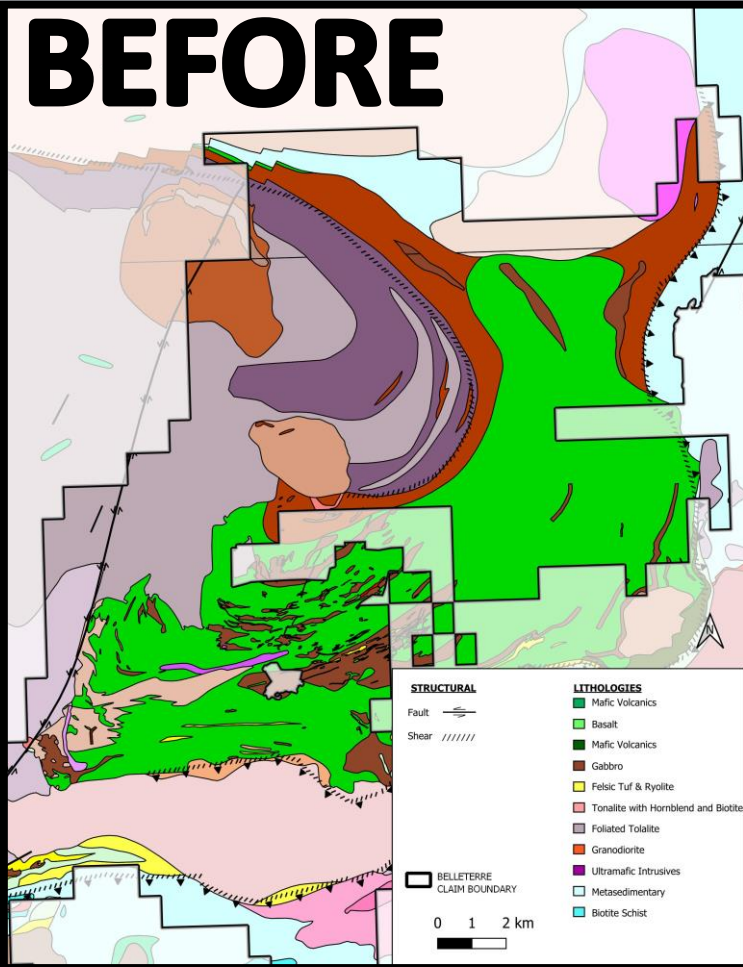




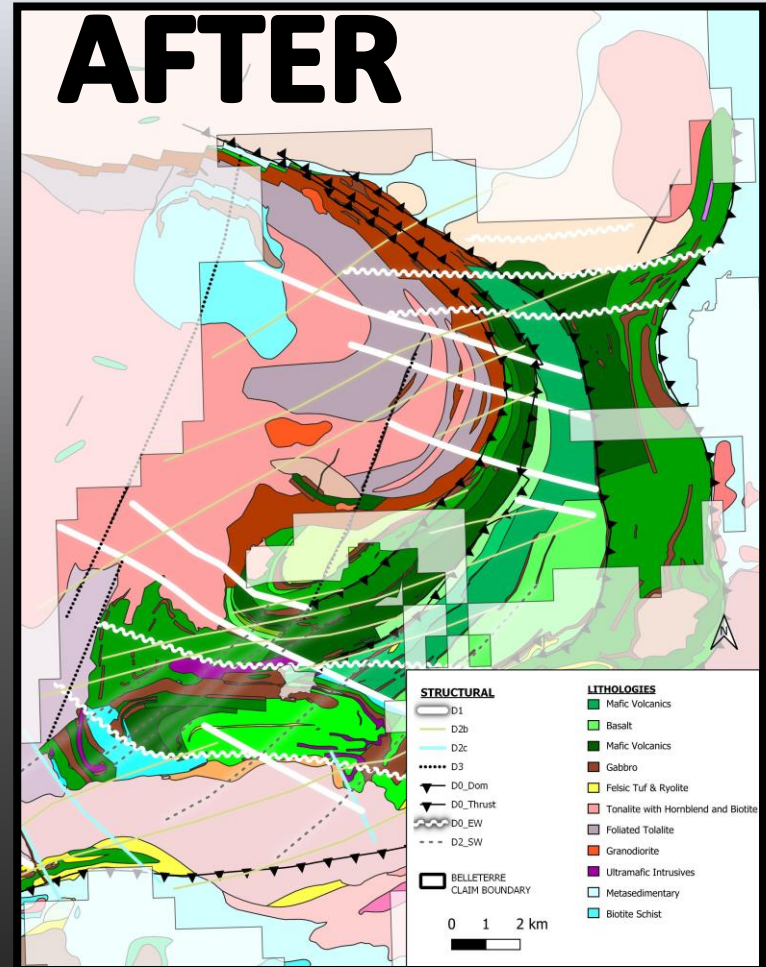
Belleterre Project

VIOR Litho-structural Model

BEFORE

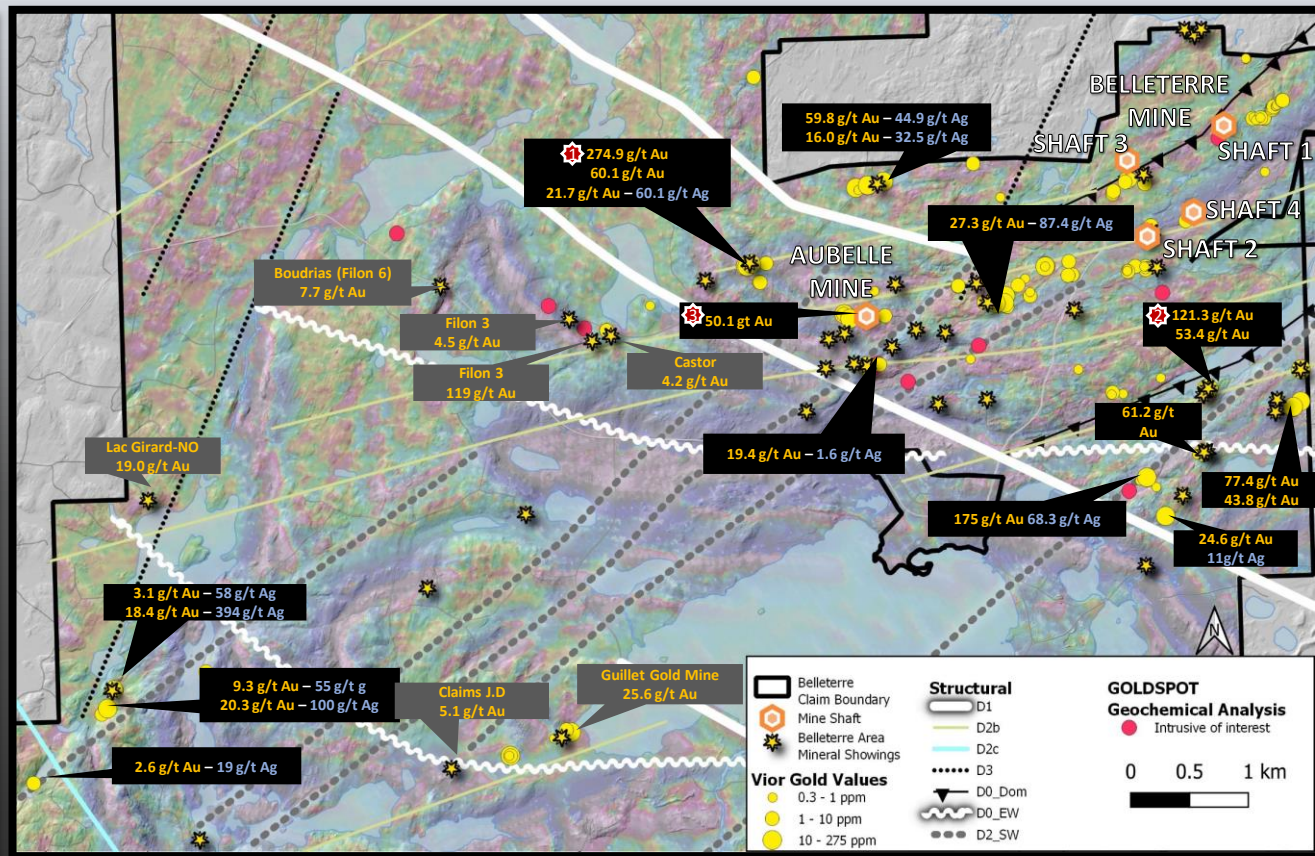


AFTER



Where there's a lot of smoke at surface there's often a big fire ...

12km of Strike (Vior surface workings 2021-2022)





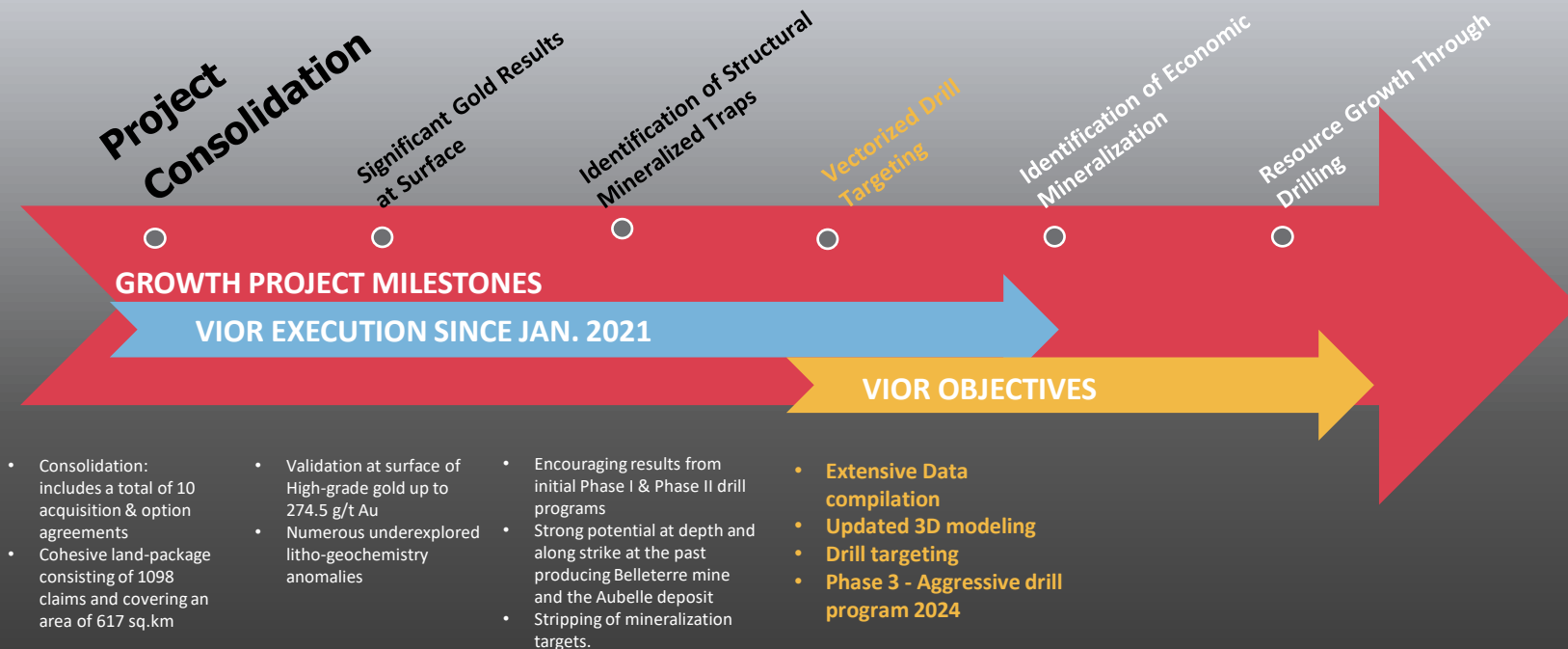
eterre Project

3d Litho-structural Model

A 3D perspective view of a geological model. The model shows various colored layers representing different lithological units. A large pinkish-red mass is prominent in the upper left. Below it, there are green and orange layers. The base of the model is a light blue-grey surface. A network of black lines represents structural features like faults and fractures. A yellow dashed box highlights a specific area on the left. A red line with elevation markers runs along the bottom edge. A vertical axis on the left is labeled 'Elev (Z)' and has values ranging from +5242000 to +5250000. The bottom right corner shows the number '22'.

Belleterre Gold Project

Exploration Timeline



SKYFALL NICKEL PROJECT

**A potential District-Scale Nickel-Cobalt-PGE
Archean Sulphide-Rich Komatiite Type Deposit**

Signed DOA in 2023 with
SOLUQUEM
\$2.5M over 2 years

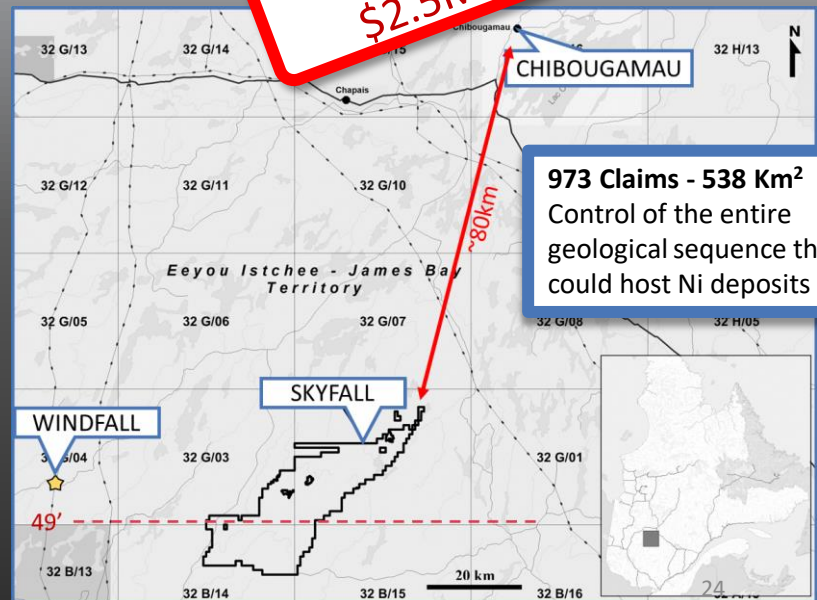
✓ Under-explored area with exciting potential

✓ Excellent location in North-Abitibi & James-Bay areas

✓ Good access created by recent logging production

✓ District-scale project in size with control of the entire fertile geological sequence

- ✓ high-definition VTEM survey completed
- ✓ 6 weeks of prospection by the end of Fall 2023



Skyfall Nickel Project

Span and Geologic Analogs

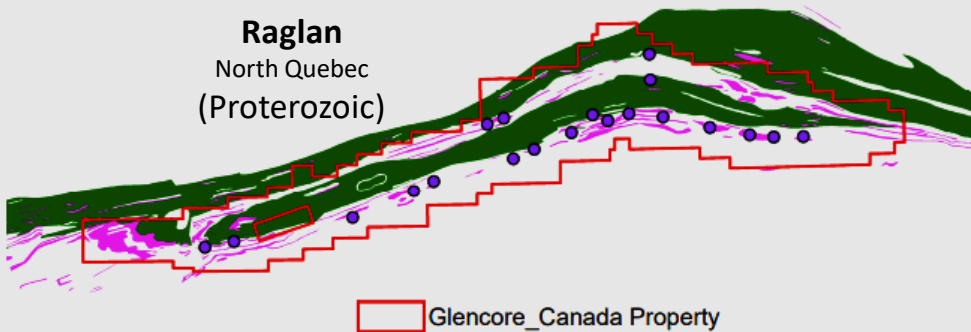
Kambalda
Australia
(Archean)

1.6Mt of nickel metal*

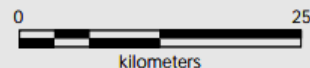
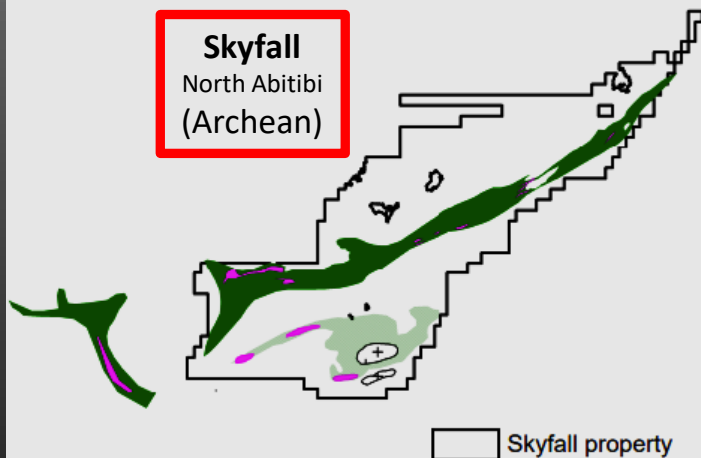
*Approximate Production

Source - Website Mincor Resources

Raglan
North Quebec
(Proterozoic)



Skyfall
North Abitibi
(Archean)



• Ni Deposit and Showing

Komatiite and ultramafic intrusive

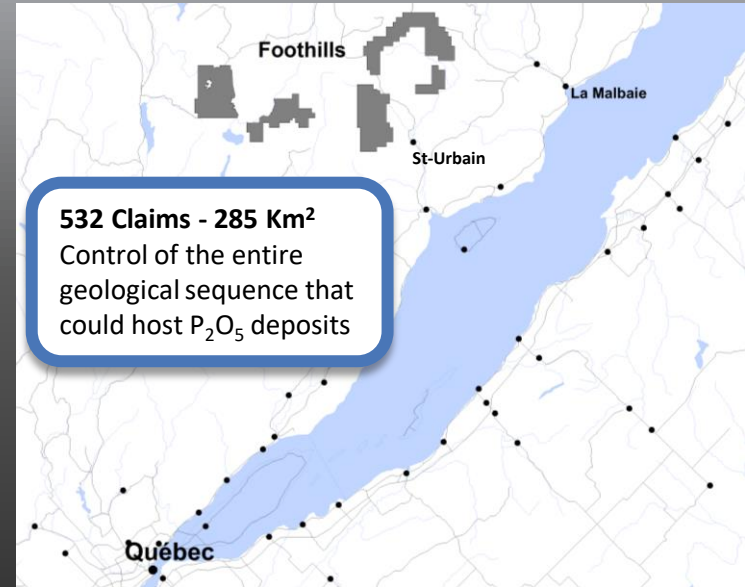
Mafic / Ultramafic sequence

Amphibolite (V3-V4) Paragneiss domaine

FOOTHILLS PROJECT

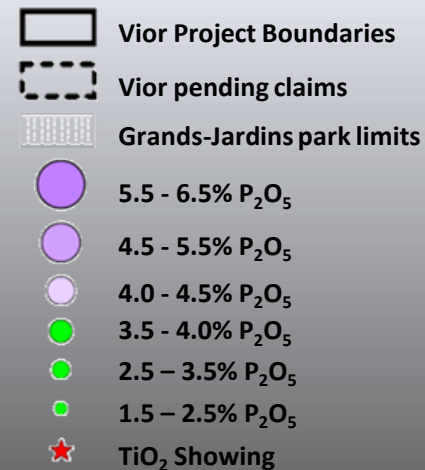
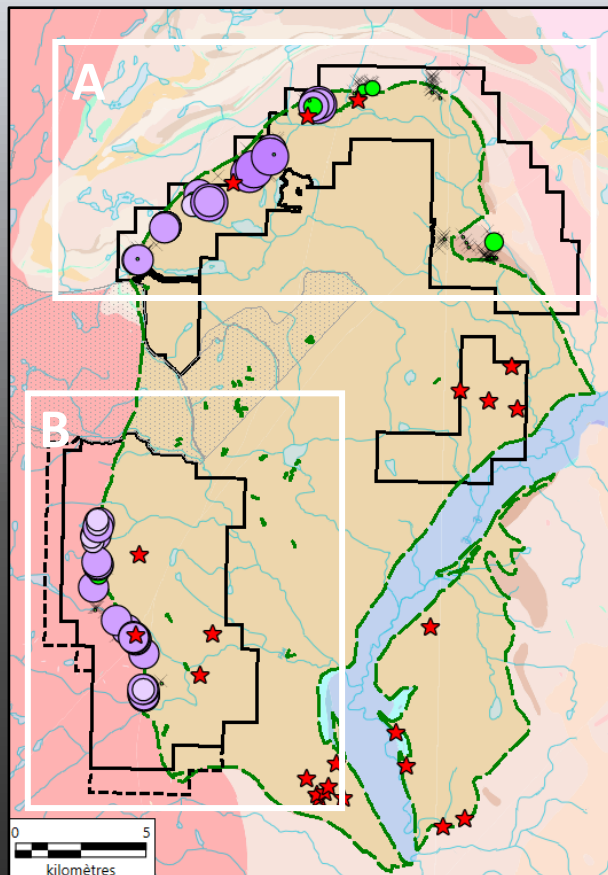
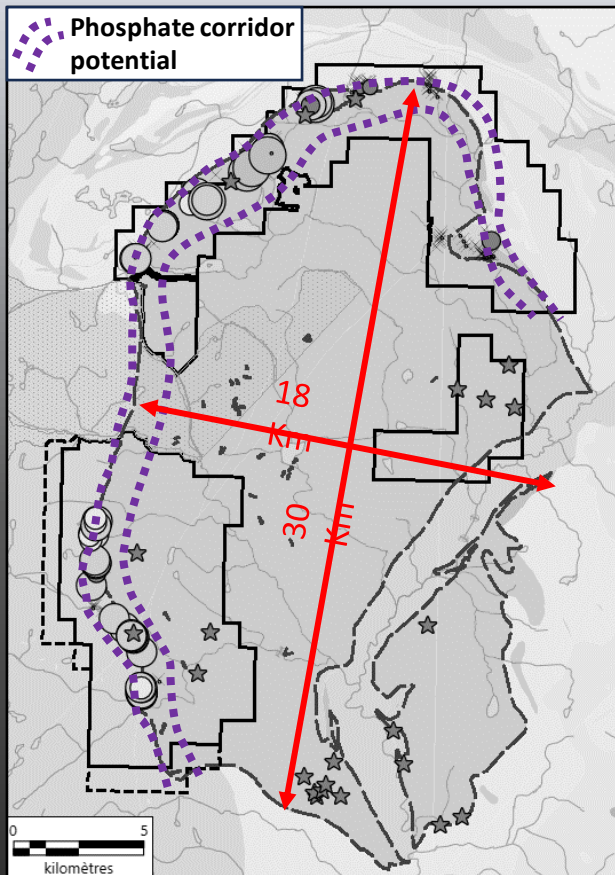
A District-Scale Titanium & Phosphate Project

- ✓ Under-explored area with exciting Phosphate potential
- ✓ Excellent location near St-Urbain, QC
- ✓ Good road infrastructure and easy access to deep water port
- ✓ **Discovery of Rutile-bearing massive ilmenite horizons**
Discovery of 16.5km Phosphate horizons



Foothills 2023 Discovery Phosphate-enriched horizons

Recognized over 16.5 km



OAGN known before Vior



OAGN: Oxide-Apatite Gabbro-Norite

Owens and Dymek (1992)



Contact Us



TSXV – VIO
OTC – VIORF
FRA – VL51

CONTACT

Mark Fedosiewich
mfedosiewich@vior.ca
+1 613 898 5052

vior.ca