

VIOR INC

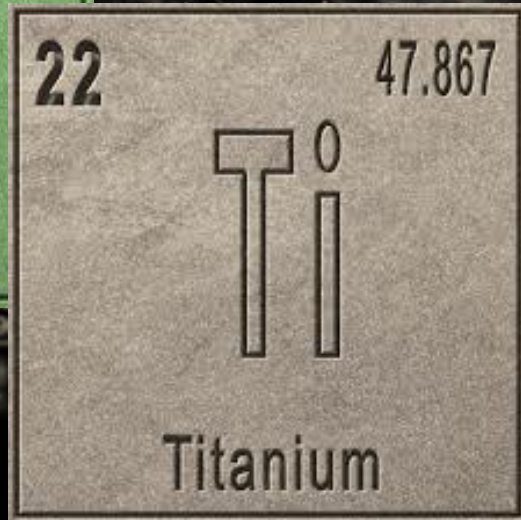
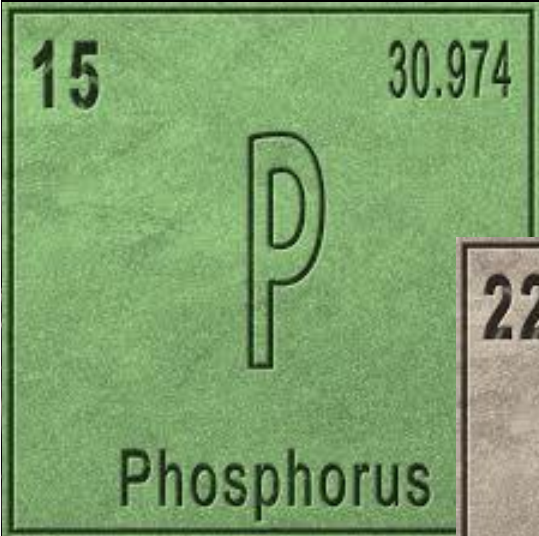


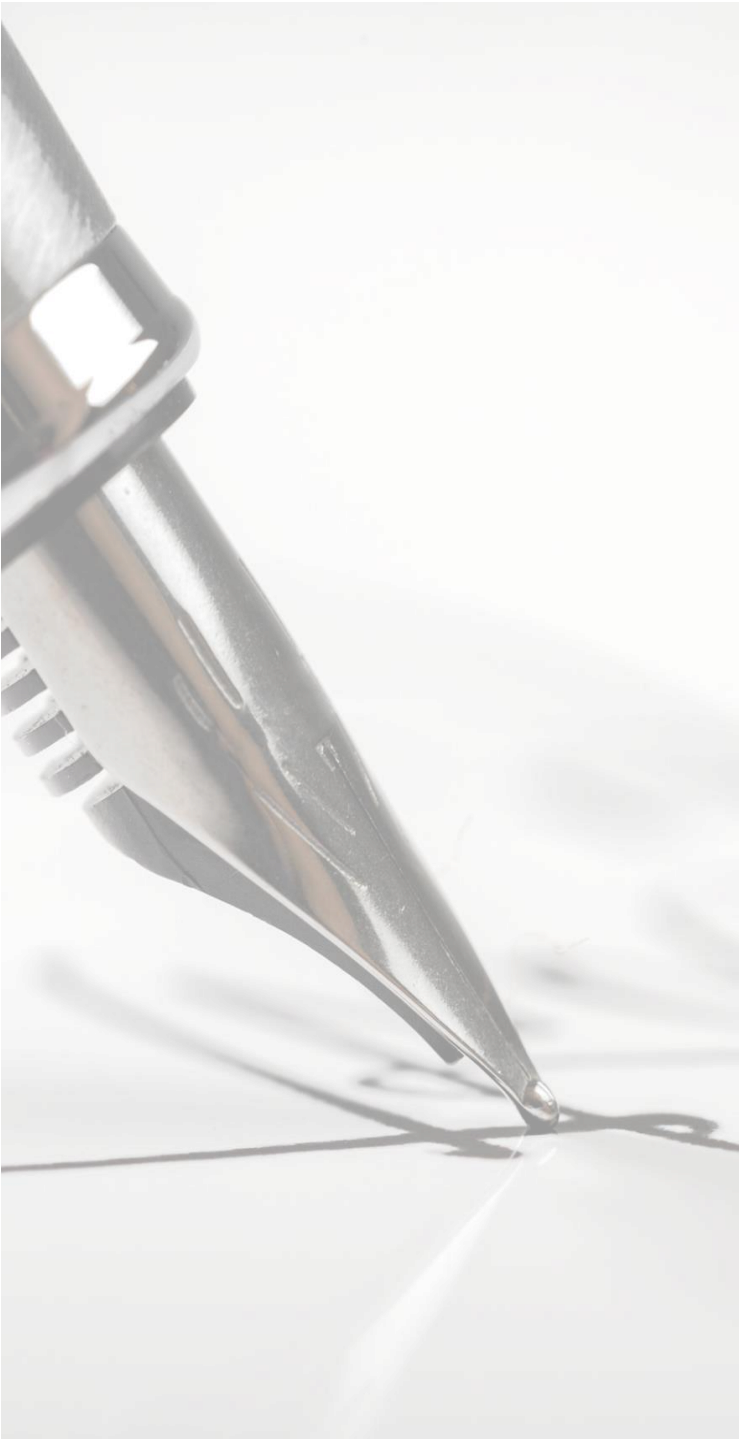
FOOTHILLS PHOSPHATE & TITANIUM

TSXV – VIO | OTC – VIORF | FRANKFURT – VL51

September 2023

A District-Scale Phosphate & Titanium Project
Igneous anorthosite-related deposits potential
Evidence of an extensive Apatite, Rutile & Ilmenite mineralized system





Because we're a responsible Company, here's the legal

Statements in this document, to the extent not based on historical events, constitute forward-looking statements. Forward-looking statements include, without limitation, statements evaluating market and general economic conditions in the preceding sections, and statements regarding future-oriented costs and expenditures.

Investors are cautioned not to place undue reliance on these forward-looking statements, which reflect management's analysis only as of the date thereof.

These forward-looking statements are subject to certain risks and uncertainties that could cause actual results to differ materially.

Such risks and uncertainties with respect to the company include the effects of general economic conditions, changing foreign exchange rates and actions by government authorities, uncertainties associated with legal proceedings and negotiations, industry supply levels, competitive pricing pressures and misjudgements in the course of preparing forward-looking statements.

Property Status

Exploration stage to locally drilling stage



Ilmenite-bearing anorthosite intrusions containing :

Rutile-Ilmenite (up to 57.6% TiO_2)

Apatite (up to 12.1% P_2O_5)



Excellent location near St-Urbain, QC
(100 km NE of Quebec City)



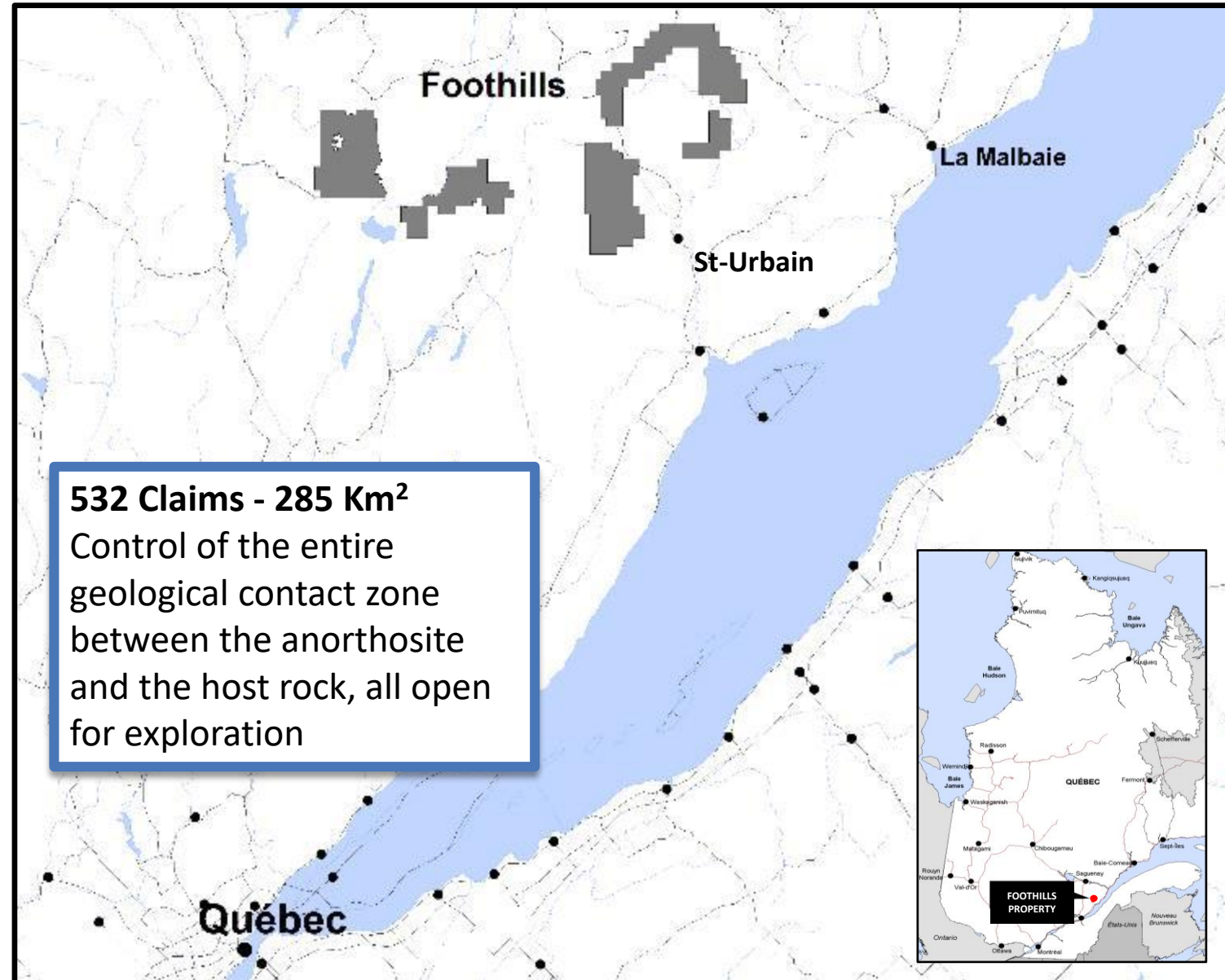
Good road infrastructure and easy,
access to deep water port

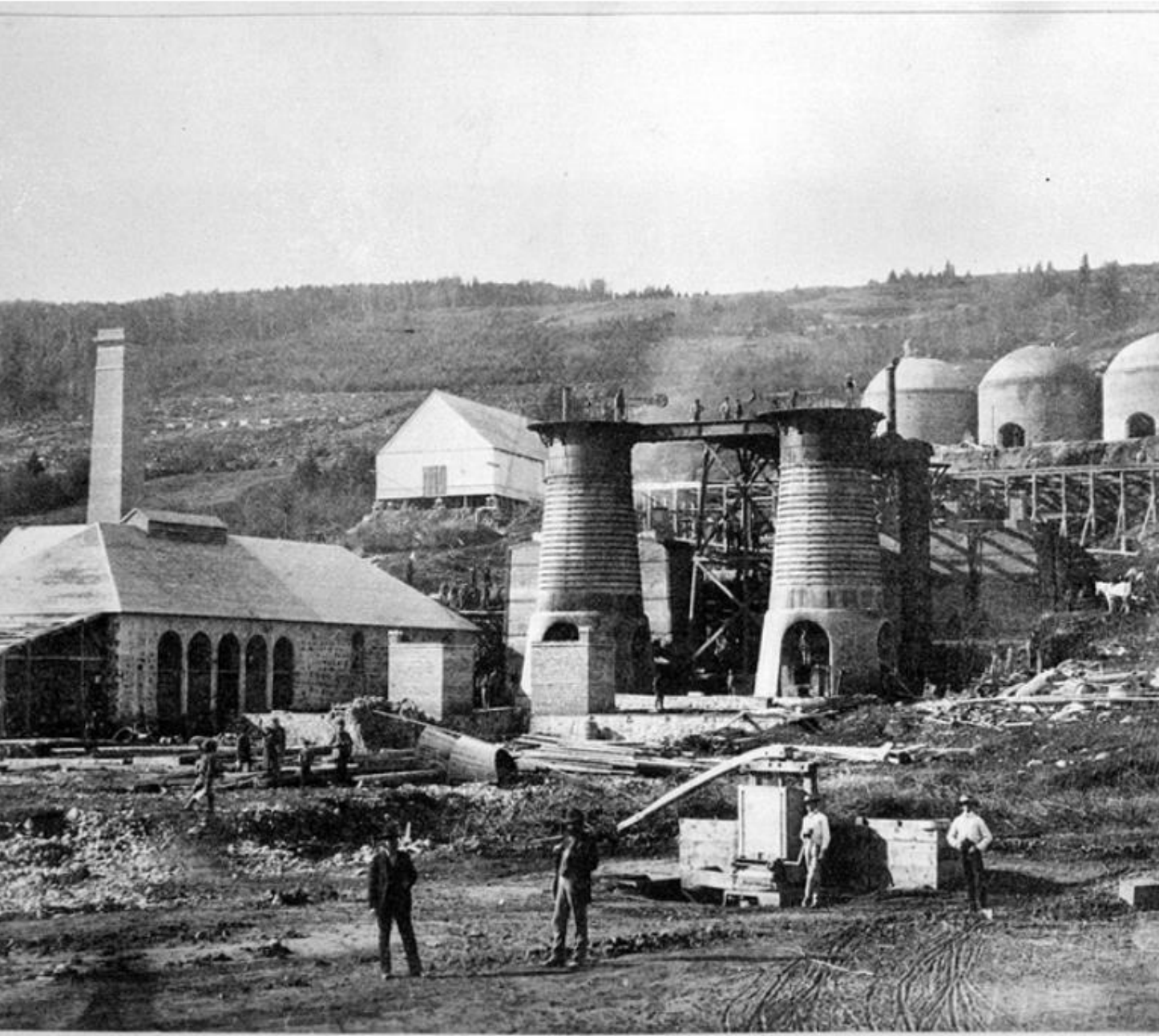


Potential district-scale project



100% ownership by Vior, no
underlying royalty





Ilmenite Mining in St-Urbain, Quebec

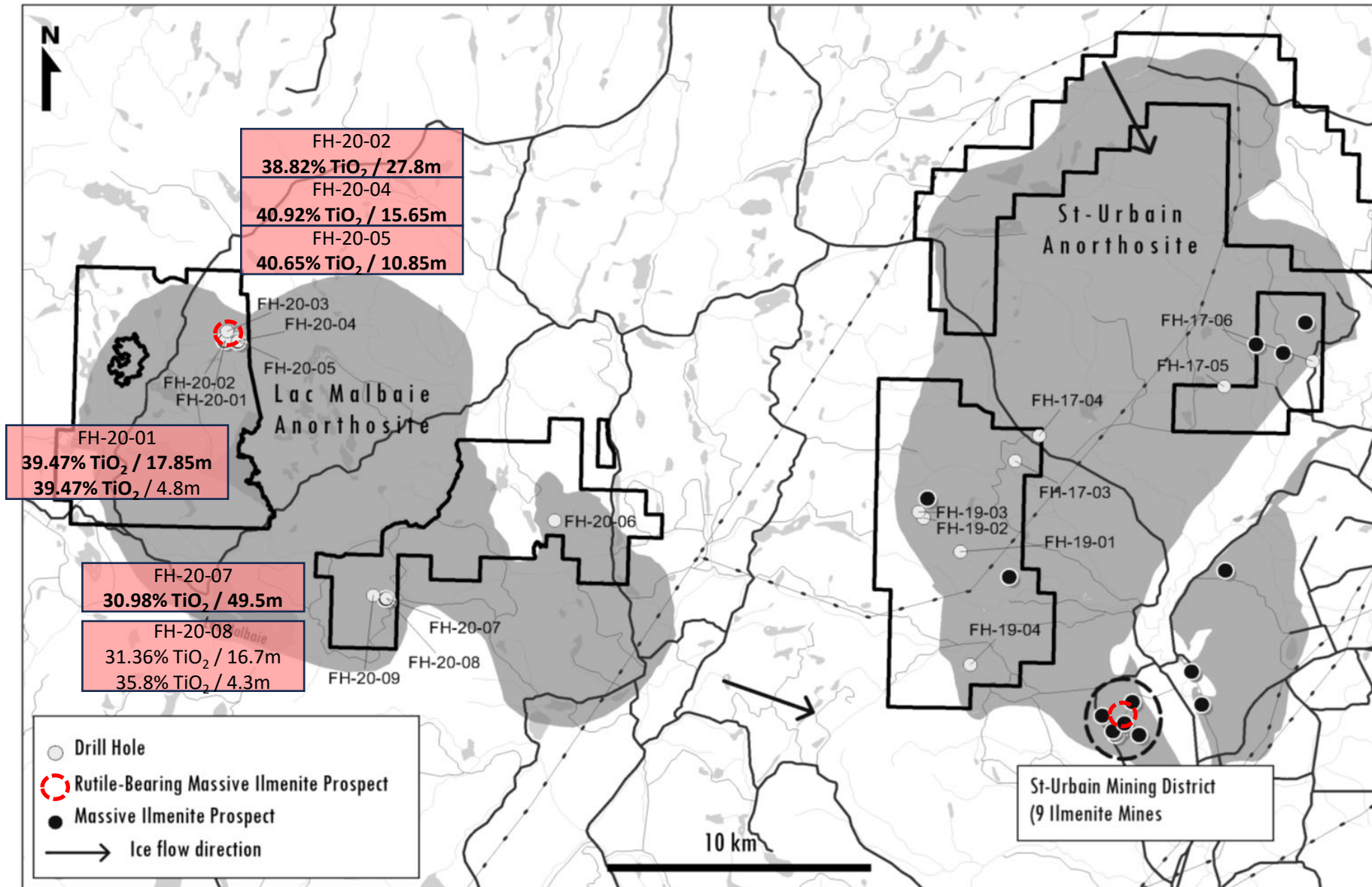
- Iron mineralization was recognized in 1665 in St-Urbain during the early days of Nouvelle-France
- Several ilmenite pits were mined intermittently between 1872 and 1970
- High amount of **rutile** is locally contained in the General Electric pit. It is also present in the Seminaire, Coulomb and Bignell pits

VIOR Exploration Work

Completed to-date

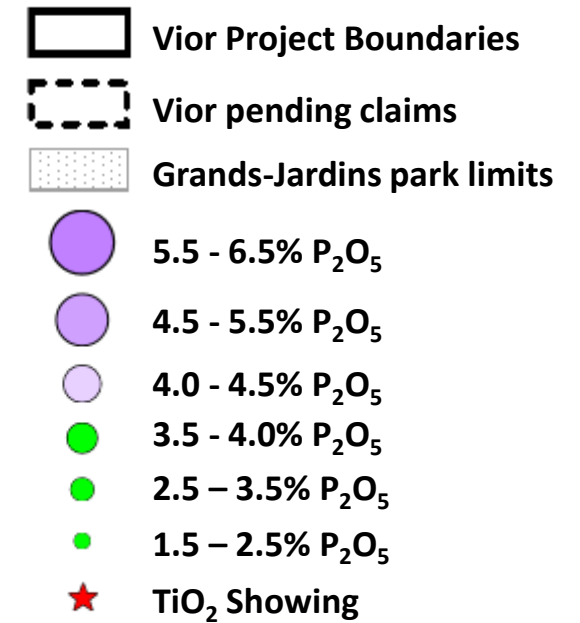
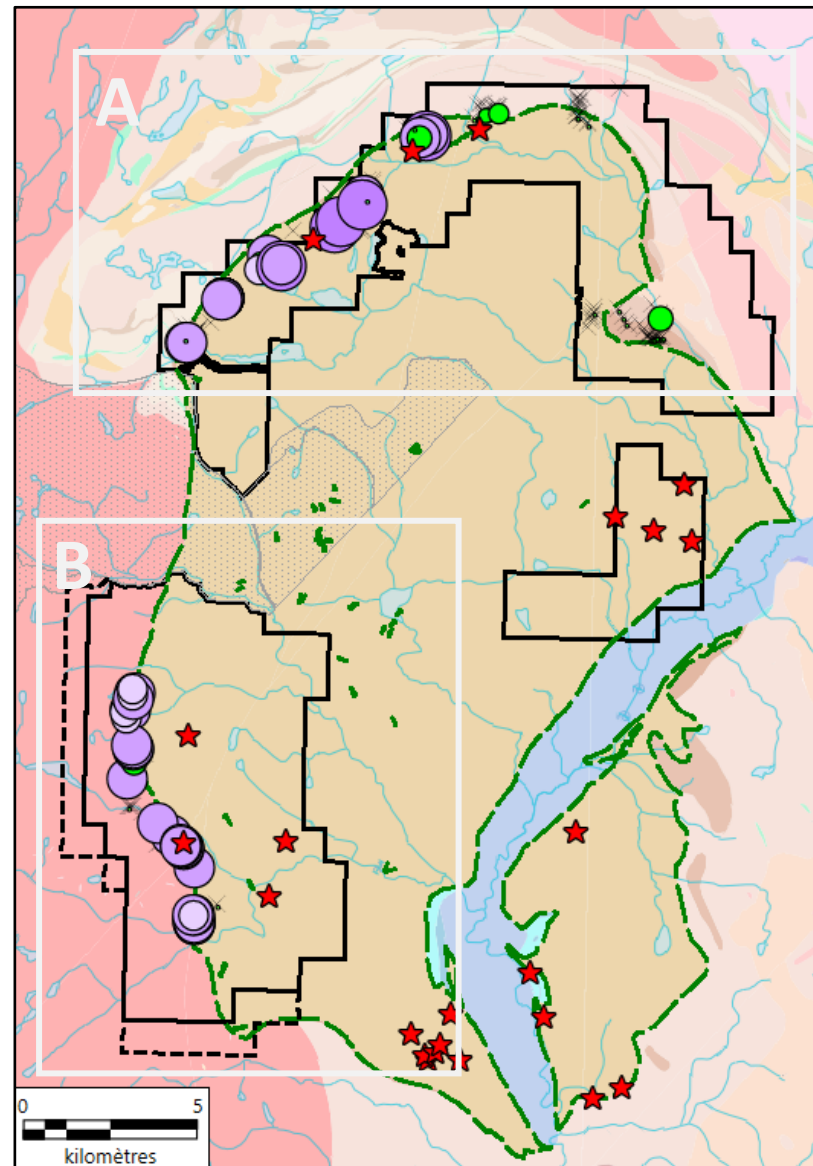
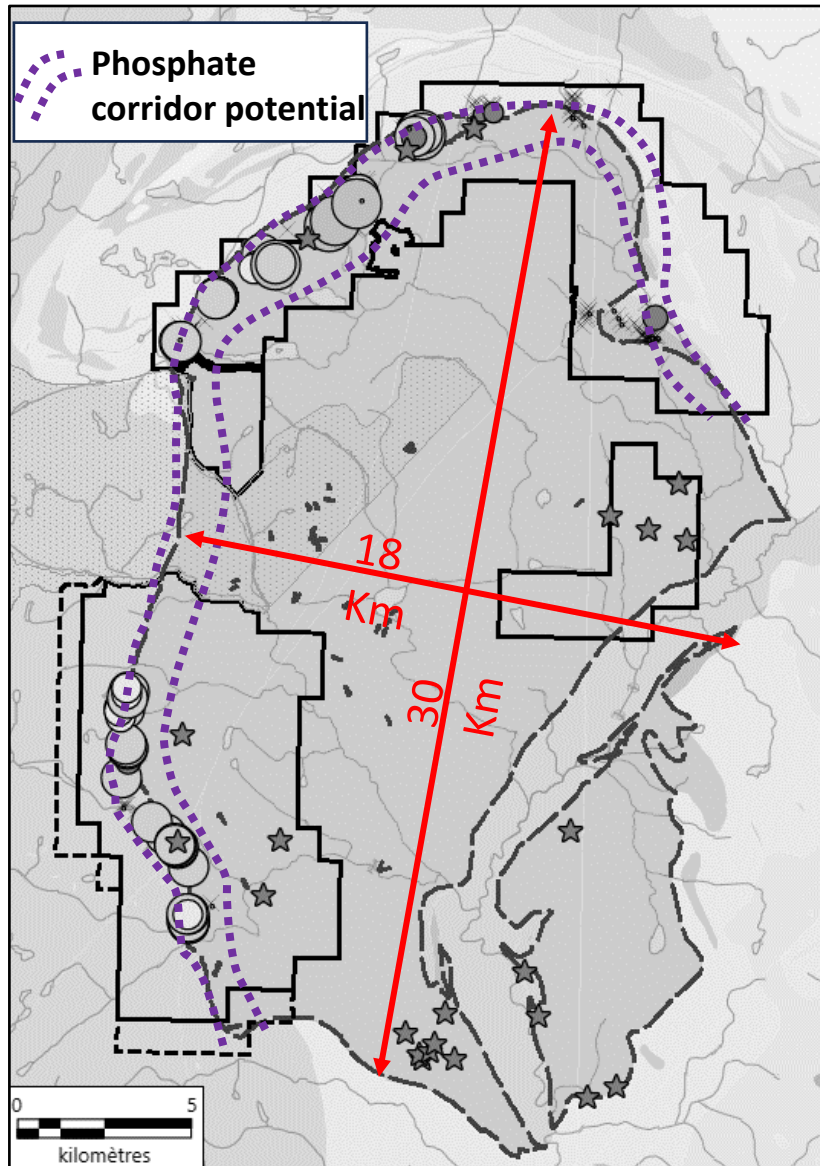
- **2014-2019:** Prospecting and boulder tracking, delimitation of rutile boulders trains.
- **2015-2017:** Comprehensive Heliborne Mag survey (5,533 km linear/50-150 m spacing) and ground gravity. Till, soil and stream sediment sampling.
- **2016:** Land stripping on the Boudreau massive ilmenite discovery.
- **2018-2019:** HeliFalcon airborne gravity survey (1,113 km/200 m spacing) and local ground gravity over few airborne anomalies.
- **2017-2020:** Diamond drilling totaling 3,870 m for 17 holes and discovery of horizons of rutile-bearing massive ilmenite mineralization.
- **2023:** Prospection and discovery of 16.5 km of phosphate-riched horizons.



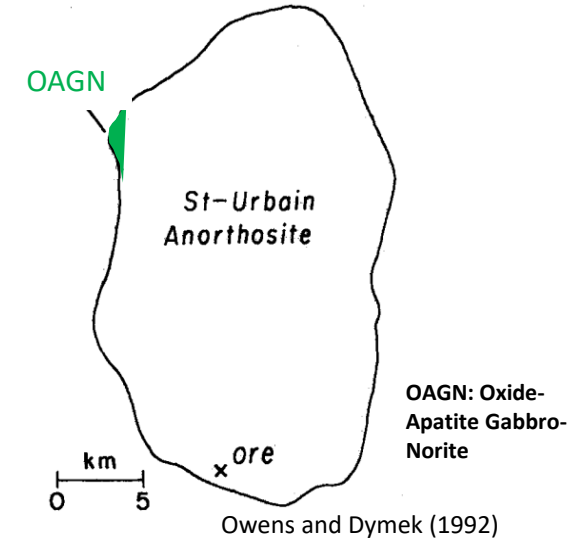


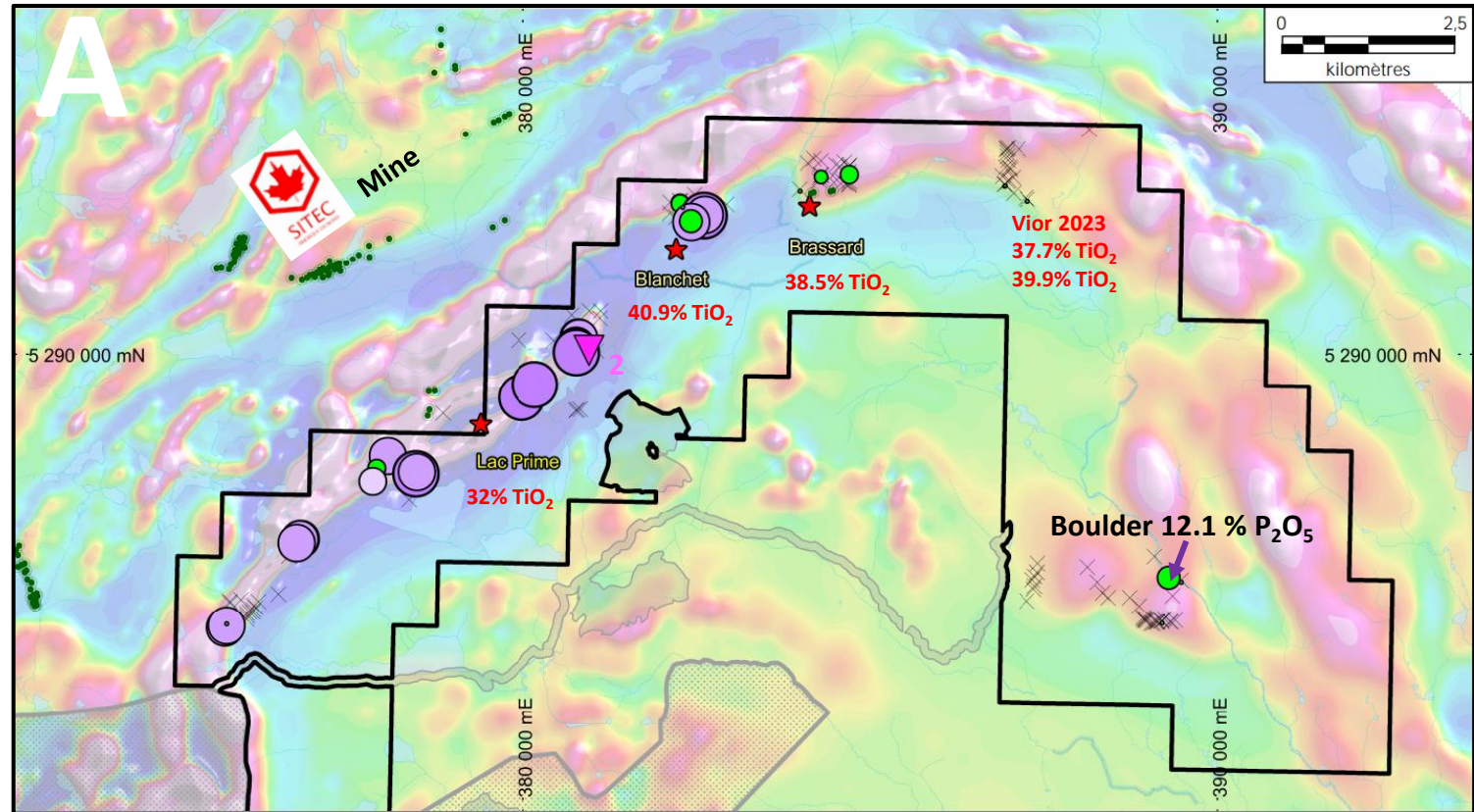
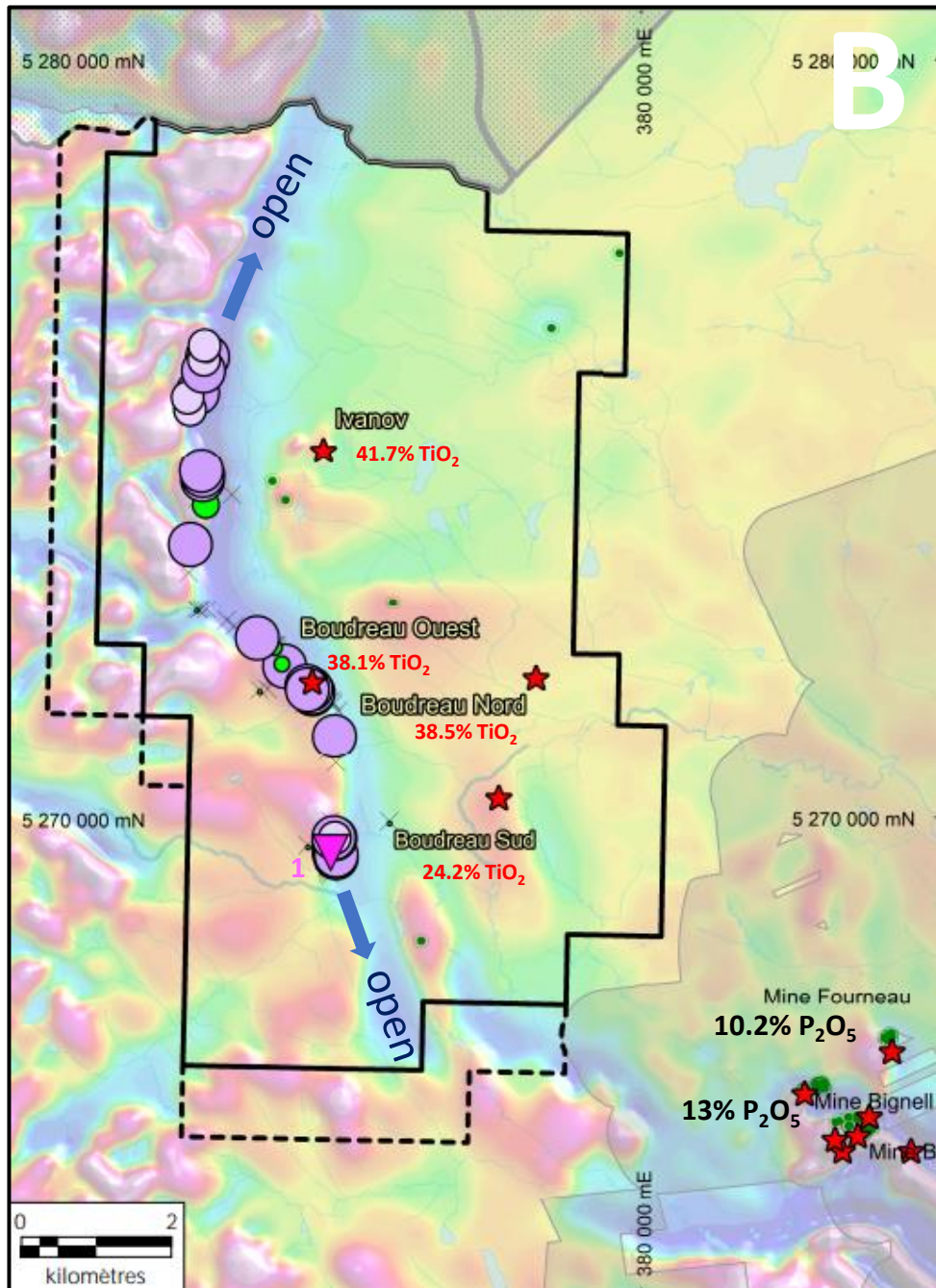
2017 / 2020 Discoveries - Rutile-bearing massive ilmenite horizons by drilling

2023 Discovery - Phosphate-enriched horizons recognized over 16.5 km



OAGN known before Vior

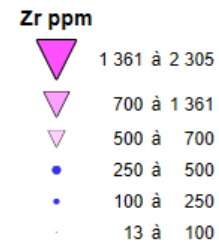
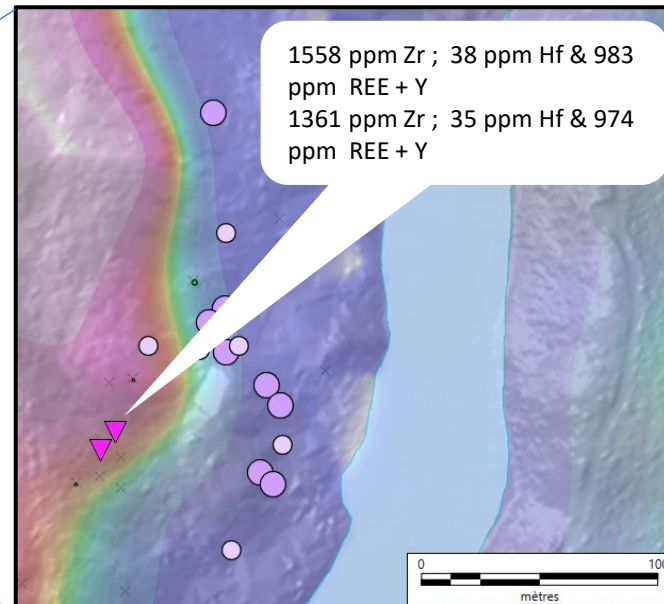
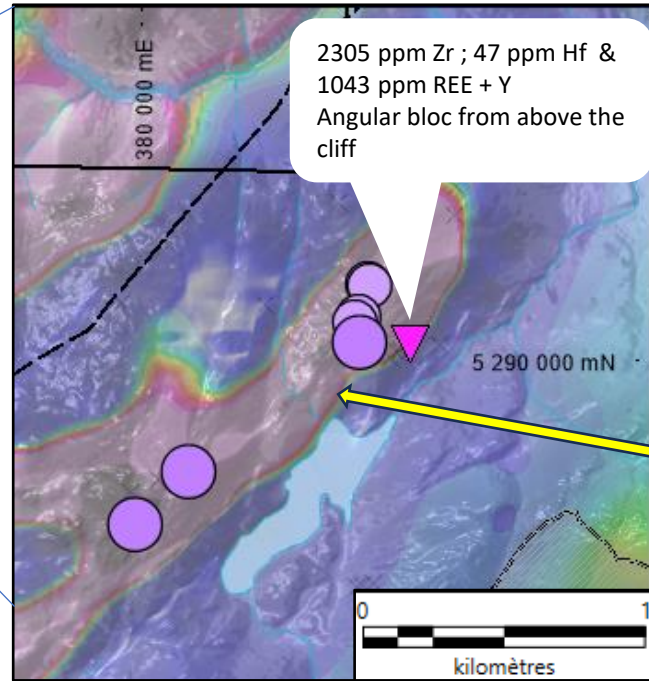
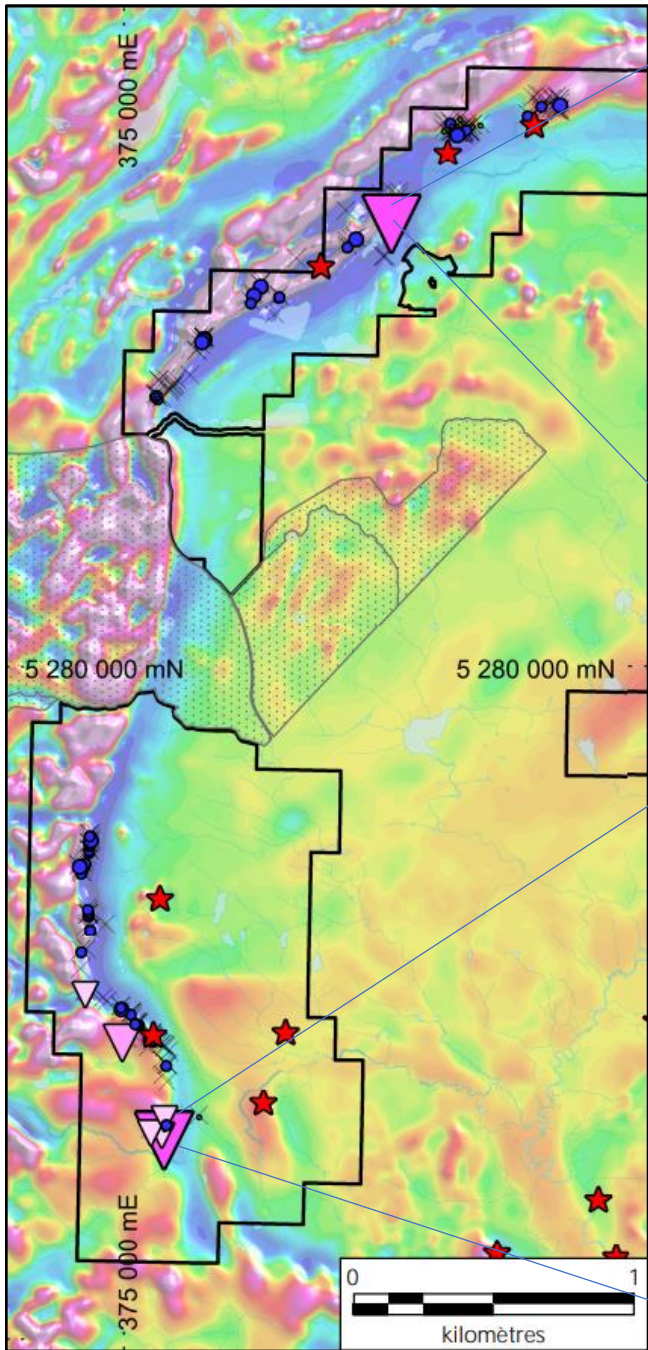




Legend

- Vior Project Boundaries
- Vior pending claims
- Grands-Jardins park limits
- TIAM
- Historic drill holes
- % TiO₂
% P₂O₅ Vior & historical results

- 5.5 - 6.5% P₂O₅
- 4.5 - 5.5% P₂O₅
- 4.0 - 4.5% P₂O₅
- 3.5 - 4.0% P₂O₅
- 2.5 - 3.5% P₂O₅
- 1.5 - 2.5% P₂O₅
- TiO₂ Showing
- Zr & REE Anomalies
 - 1 1558 ppm Zr ; 38 ppm Hf & 983 ppm REE + Y
1361 ppm Zr ; 35 ppm Hf & 974 ppm REE + Y
 - 2 2305 ppm Zr ; 47 ppm Hf & 1043 ppm REE + Y
Angular bloc from above the cliff



Zr & Hf + REE
Exploration Potential

Apatite Mineralizations



OAGN

Ilmenite, Magnetite & Apatite
mineralization

4.5% P_2O_5



Nelsonite

Apatite-rich
mineralization

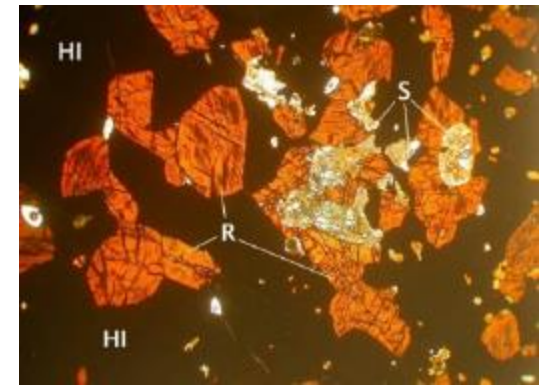
12.1% P_2O_5

Example of Rutile Minerals in Drill Core

Hole FH-20-02
at 18.95 m



Hole FH-20-01
at 90.6 m



Microphotography of urbainite in polarized light
R: rutile; HI: hemlo-ilmenite; S: sapphirine