

# VIOR INC.

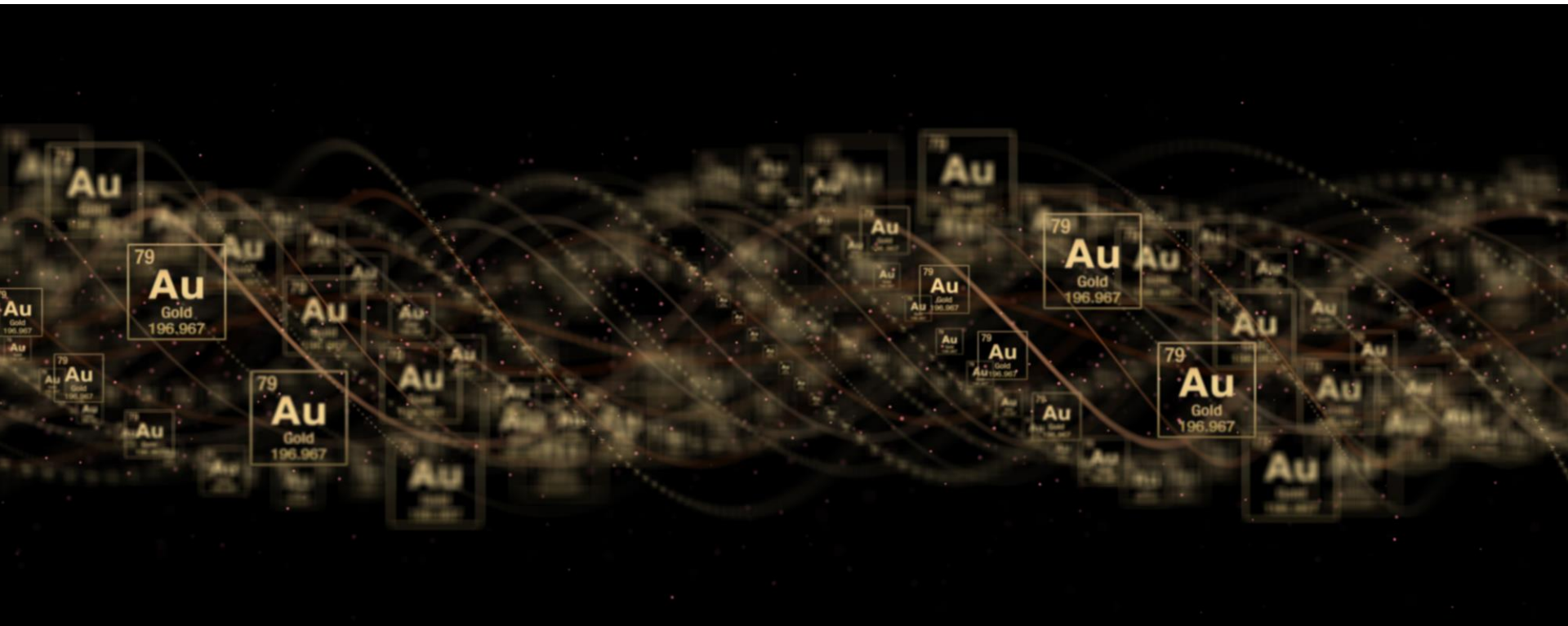
JUNIOR MINING EXPLORER



TSXV – VIO  
OTCQB – VIORF  
FRANKFURT – VL51

Presentation for  
THE Mining Investment Event of the North

June 2023



## Because we're a responsible Company, here's the legal

Statements in this document, to the extent not based on historical events, constitute forward-looking statements. Forward-looking statements include, without limitation, statements evaluating market and general economic conditions in the preceding sections, and statements regarding future-oriented costs and expenditures.

Investors are cautioned not to place undue reliance on these forward-looking statements, which reflect management's analysis only as of the date thereof.

These forward-looking statements are subject to certain risks and uncertainties that could cause actual results to differ materially.

Such risks and uncertainties with respect to the company include the effects of general economic conditions, changing foreign exchange rates and actions by government authorities, uncertainties associated with legal proceedings and negotiations, industry supply levels, competitive pricing pressures and misjudgements in the course of preparing forward-looking statements.

# Vior Corporate Profile

Who we are



**VALUE BASED ON  
STRONG FUNDAMENTALS**

## 1. STRATEGY

**Exposure to  
Multiple High  
Potential Gold  
& Strategic  
Metals  
DISCOVERIES**

A Discovery is the Key driver for value creation in an industry known for a low rate of exploration success.

## 2. SAFE JURISDICTIONS

Quebec & Nevada

Jurisdictions ranking at the top of Fraser Institute Survey 2022.

## 4. STRONG FINANCIAL TECHNICAL PARTNERS

Osisko Mining, SOQUEM, FSTQ, SIDEX, SDBJ, Desjardins, Iluka Resources Ltd., Ridgeline Minerals Corp.

## 3. EXPERTISE

**Highly Committed  
Management Team**

100+ years experience in the industry  
14%+ equity position ownership

## 5. DIVERSIFICATION

**Exploring & Investing**

Increased exposure & reduced corporate risk profile toward new discoveries.

# Vior Corporate Profile

## Who we are

### BOARD OF DIRECTORS

Independent **CLAUDE ST-JACQUES** - Chairman



**MARK FEDOSIEWICH** - President & CEO



Independent **ÉRIC DESAULNIERS**



Independent **CHARLES-OLIVIER TARTE**



**LAURENT EUSTACHE** - Executive VP



### MANAGEMENT

**MARK FEDOSIEWICH** – President & CEO

**LAURENT EUSTACHE** – Executive VP

**INGRID MARTIN** – CFO

### TECHNICAL TEAM

**CHAD PETERS, P.Geo** - Technical Advisor

**Ben Cleland, P.Geo** – Senior Exploration Manager

**MARC L'HEUREUX, P.Geo.** - Technical Advisor

**Chrisitan Blanchet, P.Geo.** – Operations Manager

**Mathieu Guay, P.Geo.** - Geology Manager

### BY THE NUMBERS

**Working Capital \*** \$4.843 M

**Shares Outstanding \*** 101,455,017

**Market Capitalization** \$16.233 M  
@ \$0.16/share

#### Major Shareholders

Osisko Mining Inc. ~ 13.6%  
*Partially Diluted* ~ 14.70%

Management ~ 14.0 %

Quebec Institutions ~ 18.0%

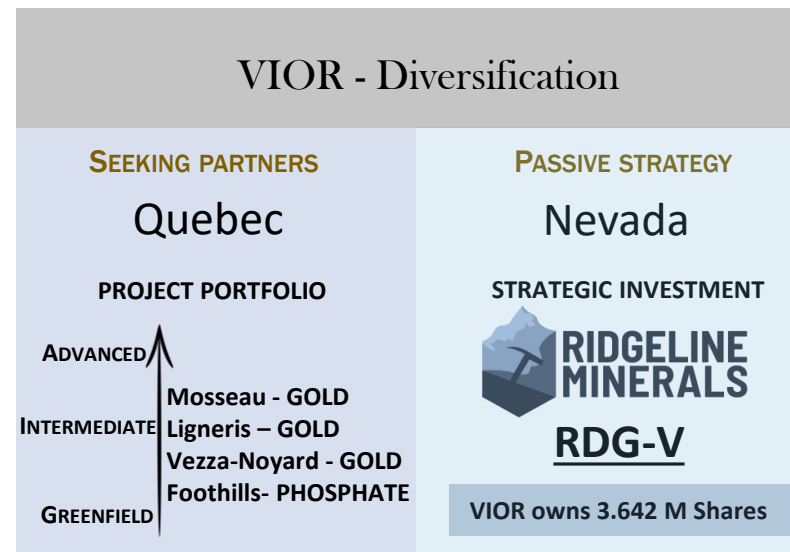
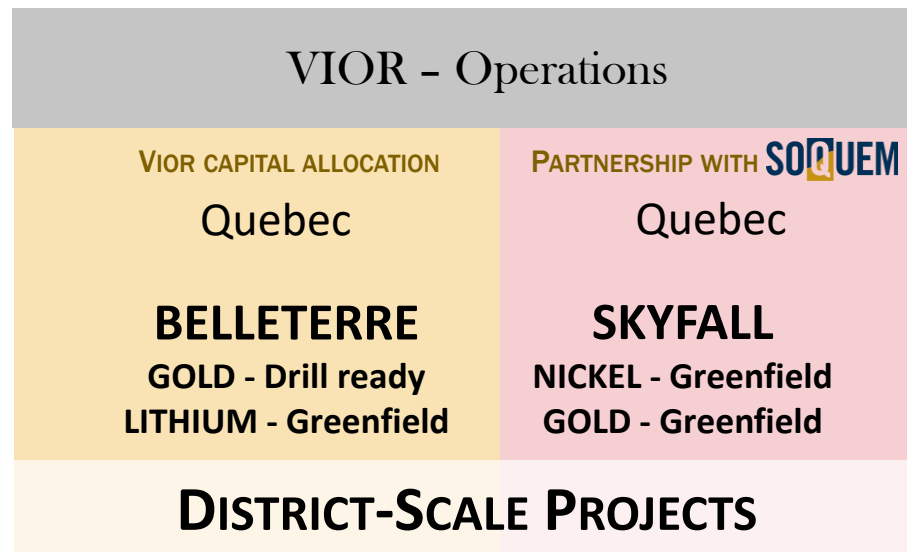
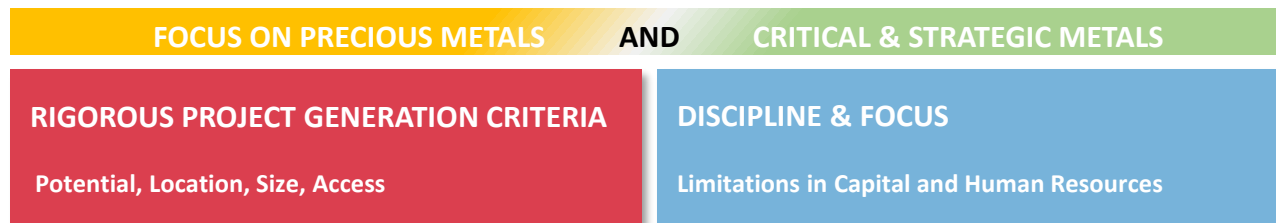
Close Strategic Holders ~ 22.0%



\* As of March 31, 2023 (Approx.)

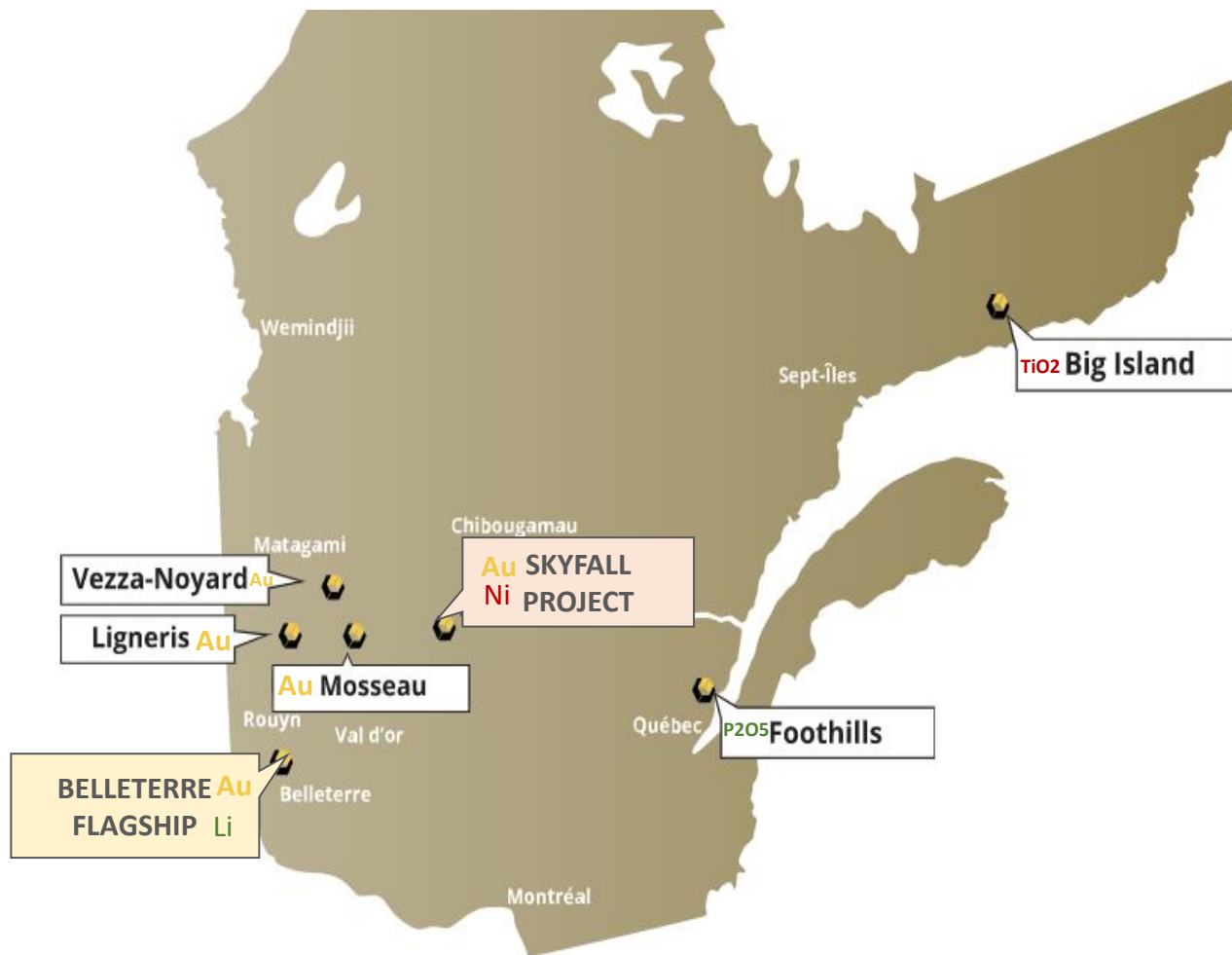
# Vior's Asset Allocation & Diversification

Exposure to major exploration projects in North America



# Projects – Overview

## Exposure to other major exploration projects in Quebec





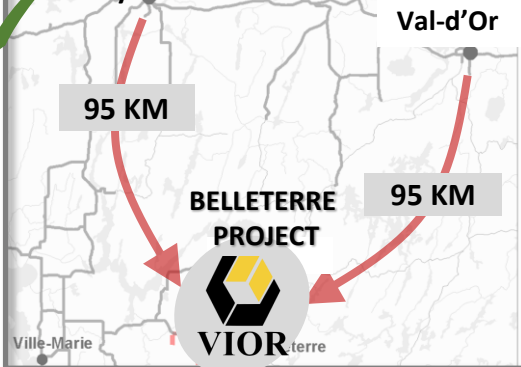
# Belleterre Gold

*Consolidated the past producing Belleterre gold camp  
and exploring for the next High-Grade gold mine...*



# Belleterre Lithium

## ✓ EXCELLENT LOCATION & ACCESS Rouyn-Noranda



## ✓ FIRST EVER CONSOLIDATION of THE BELLETERRE BELT

- District-Scale project :  
1,100 claims (618 Km<sup>2</sup>)-almost 10  
times the size of Manhattan Island!
- Control of over 80% of the Belleterre belt

## ✓ UNDEREXPLORED AREA

- Multi-deposit potential
- Multi-commodities potential
- Limited exploration at depth and has  
never been explored using modern  
techniques





# Belleterre Gold

*Consolidated the past producing Belleterre gold camp  
and exploring for the next High-Grade gold mine...*

One of the last historic high-grade gold mining camps in the  
Abitibi Greenstone Belt that is still under-explored!!

## PROVEN MINING BELT

- Past Producing Belleterre  
Gold Mine -800Koz Au @  
10.7g/t Au (MERN)

-Up to 20 known High-Grade  
Gold Veins

## PROVEN VALUE CREATION STRATEGY

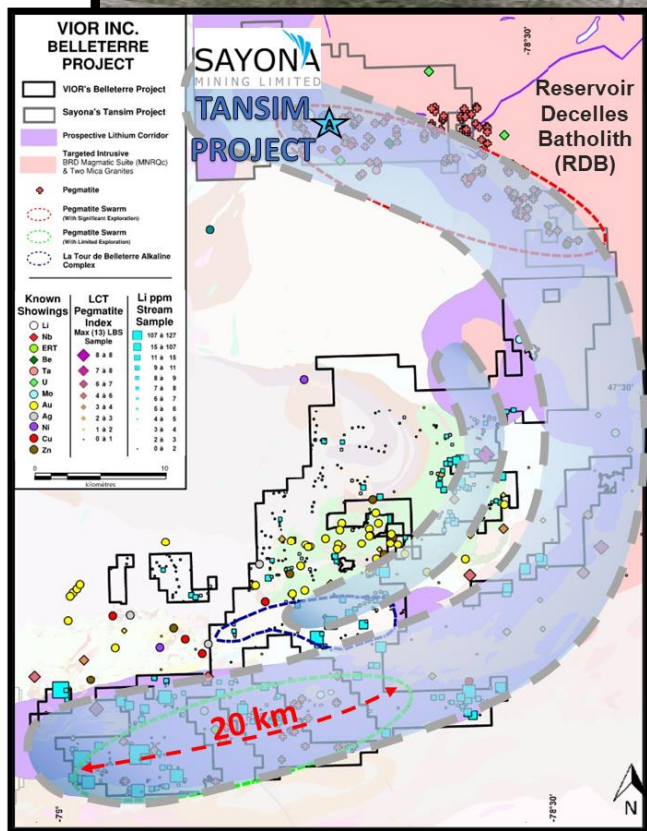
M&A ACTIVITIES from previous  
consolidated past producing  
camps:

- Osisko (Cdn. Malartic mine)
- Detour Gold (Detour mine)
- Integra (Lamaque mine)



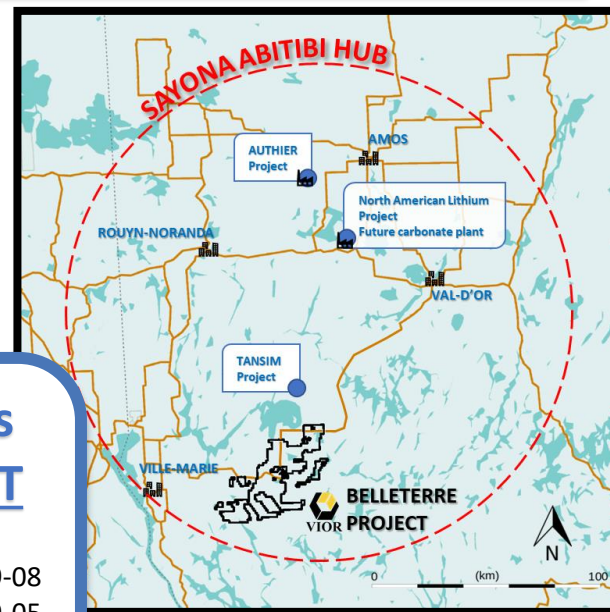


# Belleterre Lithium



## Sayona Mining's TANSIM PROJECT (Highlight Results)

1,05% Li<sub>2</sub>O over 10,25 m VD-19-08  
1,29% Li<sub>2</sub>O over 12,35 m VD-19-05  
0,82% Li<sub>2</sub>O over 43,7 m VD-19-10  
Source SIGEOM GM71640



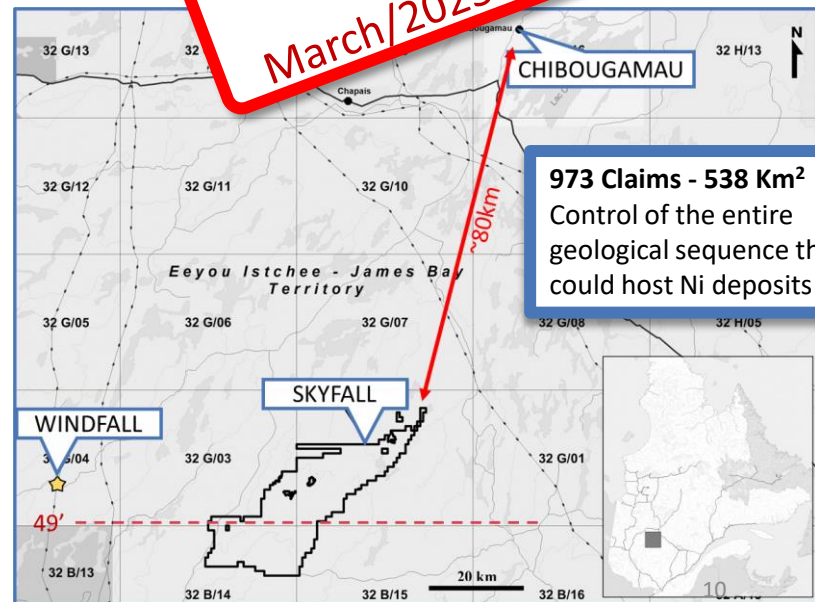


# SKYFALL PROJECT

A potential District-Scale Nickel-Cobalt-PGE  
Archean Sulphide-Rich Komatiite Type Deposit

Recently Signed DOA with  
**SOLUQUEM**  
March/2023 (\$2.5M over 2 years)

- ✓ Under-explored area with exciting potential
- ✓ Excellent location in North-Abitibi & James-Bay areas
- ✓ Good access created by recent logging production
- ✓ District-scale project in size with a control of the entire fertile geological sequence
  - ✓ 2023 : \$1.5M exploration budget including high-definition VTEM survey



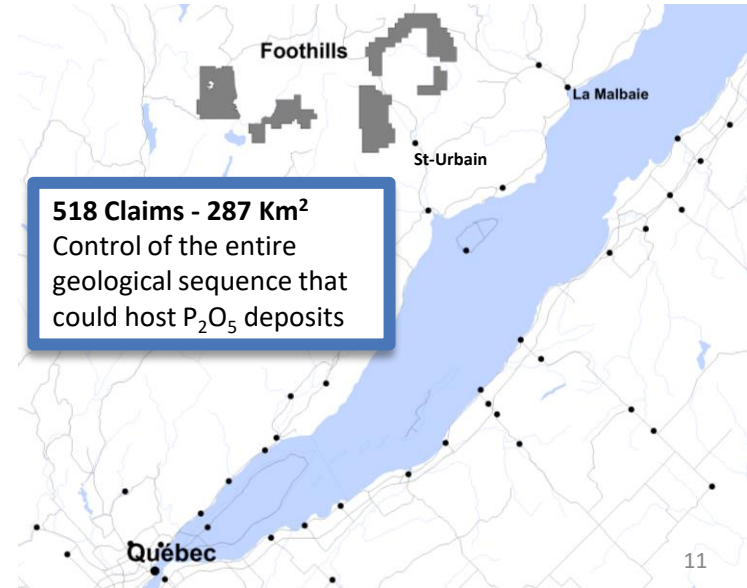
**973 Claims - 538 Km<sup>2</sup>**  
Control of the entire geological sequence that could host Ni deposits



# FOOTHILLS PROJECT

Phosphate -  $P_2O_5$   
Apatite Mineralisation

- ✓ Under-explored area with exciting Phosphate potential
- ✓ Excellent location near St-Urbain, QC
- ✓ Good road infrastructure and easy access to deep water port
- ✓ District-scale project in size with control of 36 km prospective corridor at the contact of an Anorthosite intrusive:
  - ✓ Prospection results : boulders & outcrops with up to 12.14%  $P_2O_5$  in Nelsonite Horizons





# The Vior Investment Opportunity

## SOLID FOUNDATION

- ✓ Low-cost Corporate Structure
- ✓ Large Insider share ownership
- ✓ Exposure to multiple High Potential Projects in Safe Jurisdictions

## PROVEN STRATEGY

- ✓ Significant new Discovery Potential
  - Belleterre Gold & Belleterre Lithium
  - Skyfall Nickel
- ✓ Osisko Mining Inc's Endorsement



### ❖ Belleterre Gold - Rapidly Advancing

- ✓ *2023 Comprehensive field validation program that will include stripping, channel sampling & backpack drilling*
- ✓ *Finalize DDH targets for an AGGRESSIVE 30,000m GOLD DRILL PROGRAM*

### ❖ Belleterre Lithium – Rapidly Advancing

- ✓ *2023 Comprehensive field validation program to confirm Lithium bearing Pegmatites for a potential Fall Drill Program*

### ❖ Skyfall Nickel – Greenfield district-scale Potential

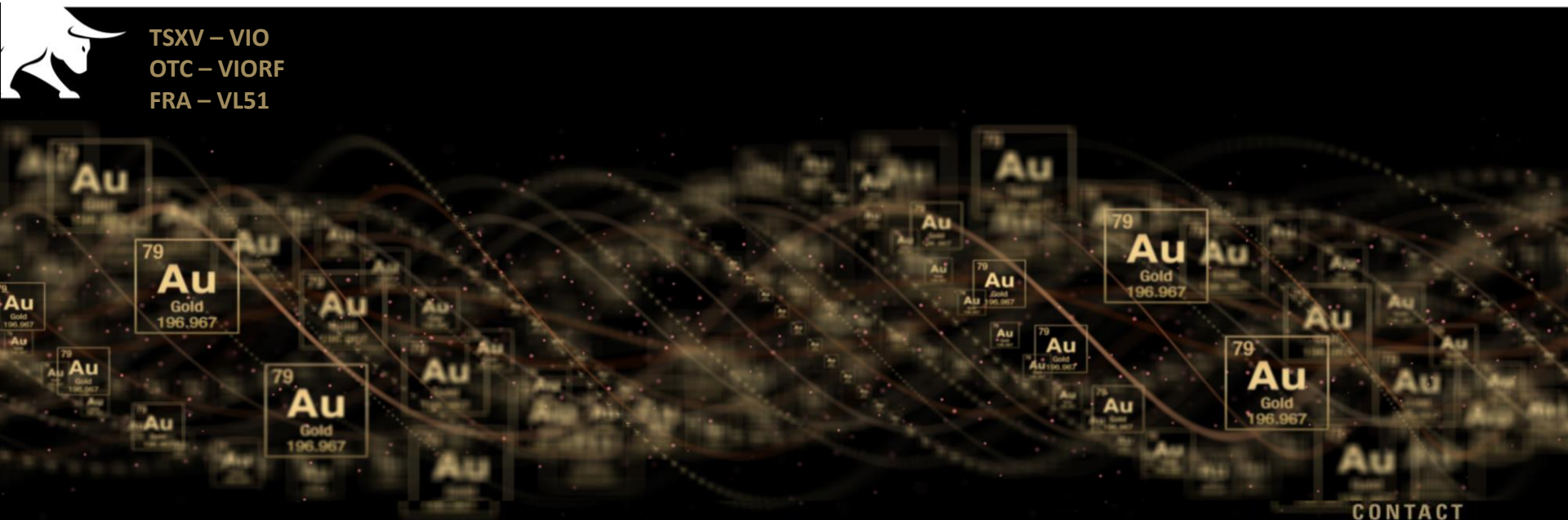
- ✓ *\$2.5M Option and JV with SOQUEM - March 2023*
- ✓ *2023 High Resolution EM survey and comprehensive field program*

### ❖ Ridgeline Investment – Excellent upside from 6 high quality exploration projects Au/Ag/Cu in Nevada/Idaho

# CONTACT US



TSXV – VIO  
OTC – VIORF  
FRA – VL51



## CONTACT

Mark Fedosiewich  
mfedosiewich@vior.ca  
+1 613 898 5052

[vior.ca](http://vior.ca)

# APPENDIX



TSXV – VIO  
OTC – VIORF  
FRA – VL51





# Belleterre Project

District Scale Multi-Deposit Potential

TANSIM LITHIUM  
PROJECT



Reservoir  
Decelles  
Batholith  
(RDB)

95km  
VAL-D'OR

- Belleterre Precious metals Claims
- Belleterre Critical minerals Claims
- Belleterre Historic Gold Deposits

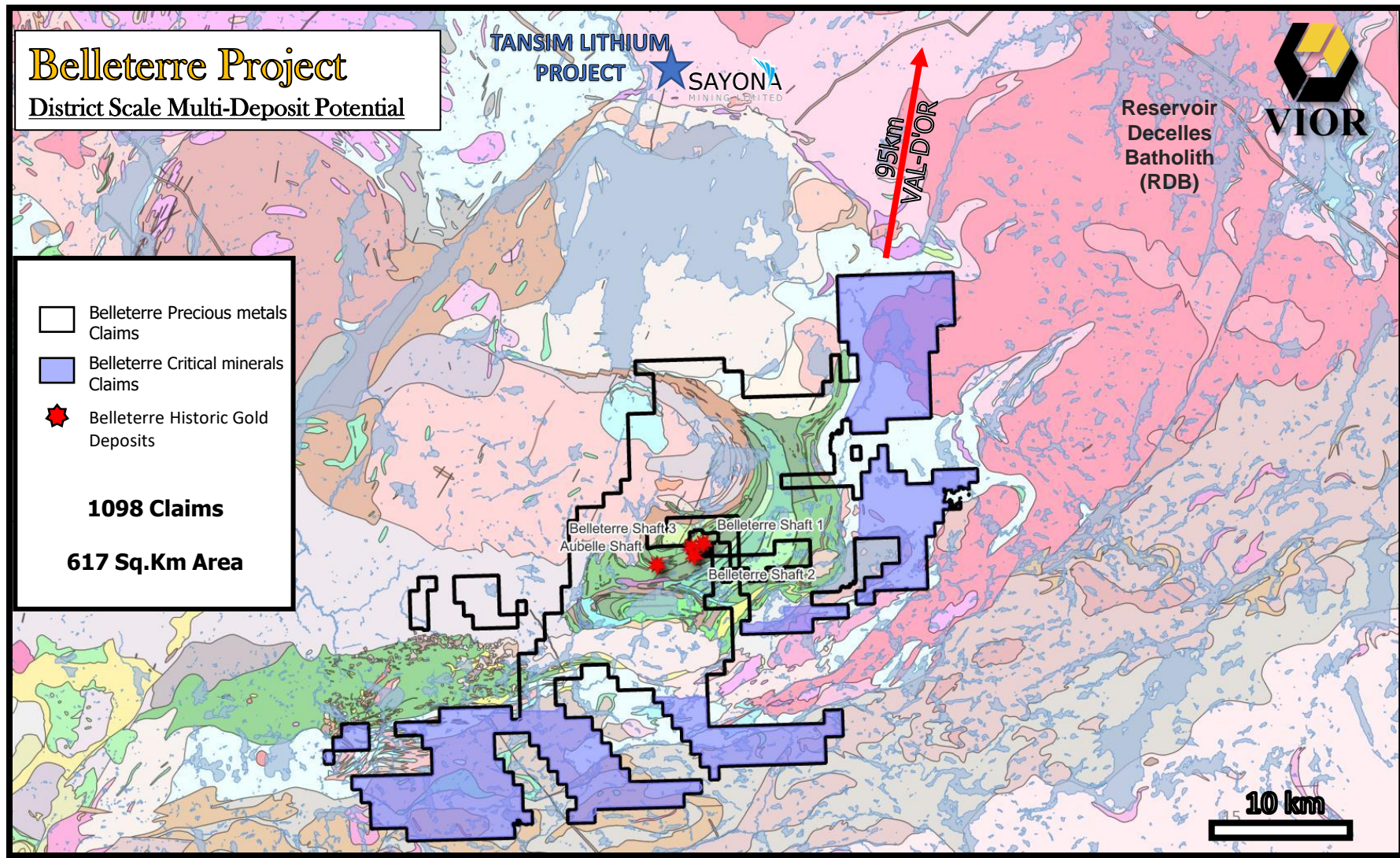
**1098 Claims**

**617 Sq.Km Area**

Belleterre Shaft3  
Aubelle Shaft

Belleterre Shaft 1  
Belleterre Shaft2

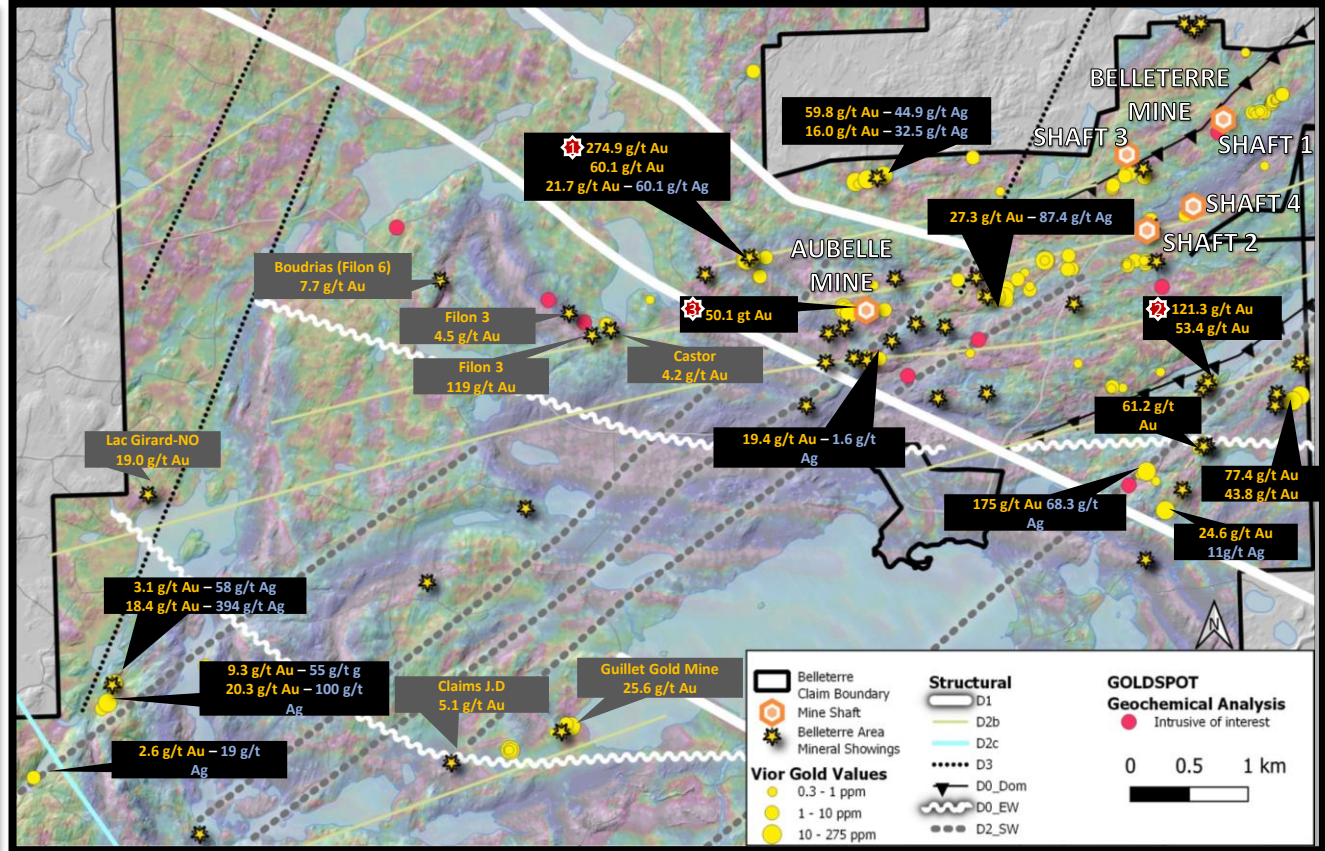
10 km





# Where there's a lot of smoke at surface there's often a big fire ...

12km of strike (Vior surface workings 2021-2022)



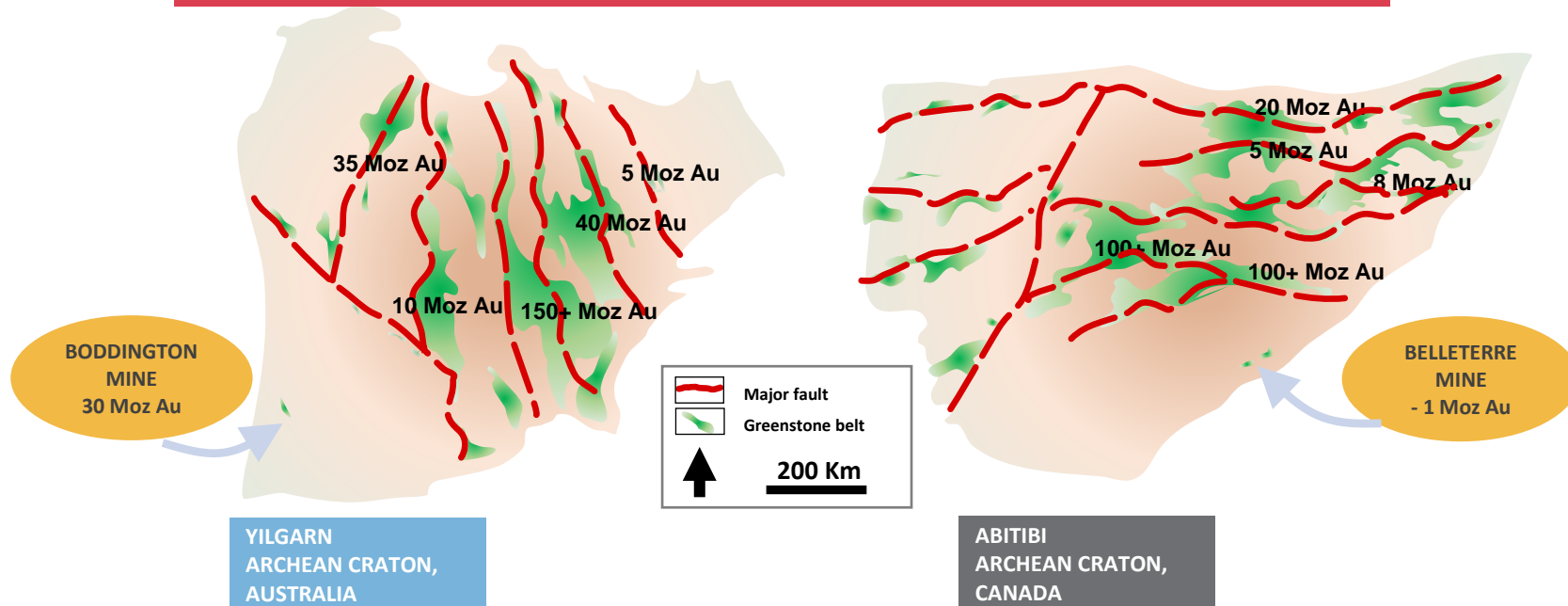
# Belleterre Project – Geological Context

Forgotten And Underexplored Greenstone Belts?

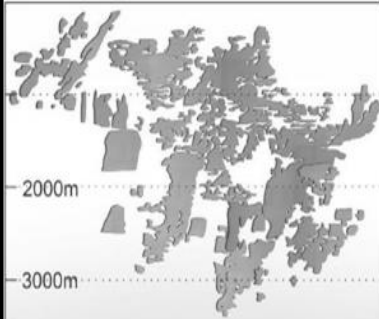


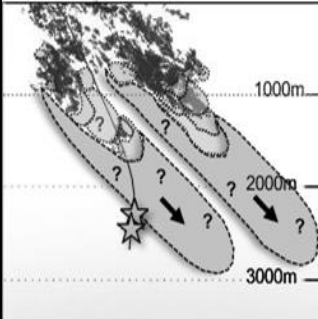
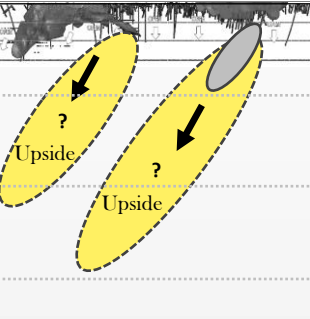


## BELLETERRE A UNIQUE LOCATION...

Belleterre is located at the edge of an Archean Craton, outside of a major fault in a small greenstone belt just like the Boddington mine discovered in 1979 in Australia.



# Potential Value Creation per vertical metres in well renown Historic High-grade Mining Camps

<b>RED LAKE (1949)</b> Historical Production 23 M oz Au 2.1 M Proven & Probable	<b>MACASA (1933)</b> Historical Production 5 M oz Au 2.2 M Proven & Probable	<b>LaRONDE (1967)</b> Historical Production 6 M oz Au 3.1 M Proven & Probable	<b>WINDFALL (2022)</b> Resource Estimate 7 M+ oz Au	<b>BELLETERRE (1937)</b> Historical Production 800 K oz @ 10.7g/t Au (MERN)
				
<ul style="list-style-type: none"> <li>• VERTICAL DEPTH : <b>3100m</b></li> <li>• Min. MINERAL WIDTH : <b>2m</b></li> </ul>	<ul style="list-style-type: none"> <li>• VERTICAL DEPTH : <b>2000m</b></li> <li>• Min. MINERAL WIDTH : <b>2m</b></li> </ul>	<ul style="list-style-type: none"> <li>• VERTICAL DEPTH : <b>3500m</b></li> <li>• Min. MINERAL WIDTH : <b>5m</b></li> </ul>	<ul style="list-style-type: none"> <li>• VERTICAL DEPTH : <b>1600m</b></li> <li>• Min. MINERAL WIDTH : <b>2m</b></li> </ul>	<ul style="list-style-type: none"> <li>• VERTICAL DEPTH : <b>600m</b></li> <li>• Min. MINERAL WIDTH : <b>2m</b></li> </ul>



One of the last under-explored historic high-grade gold mining camps in the Abitibi region.

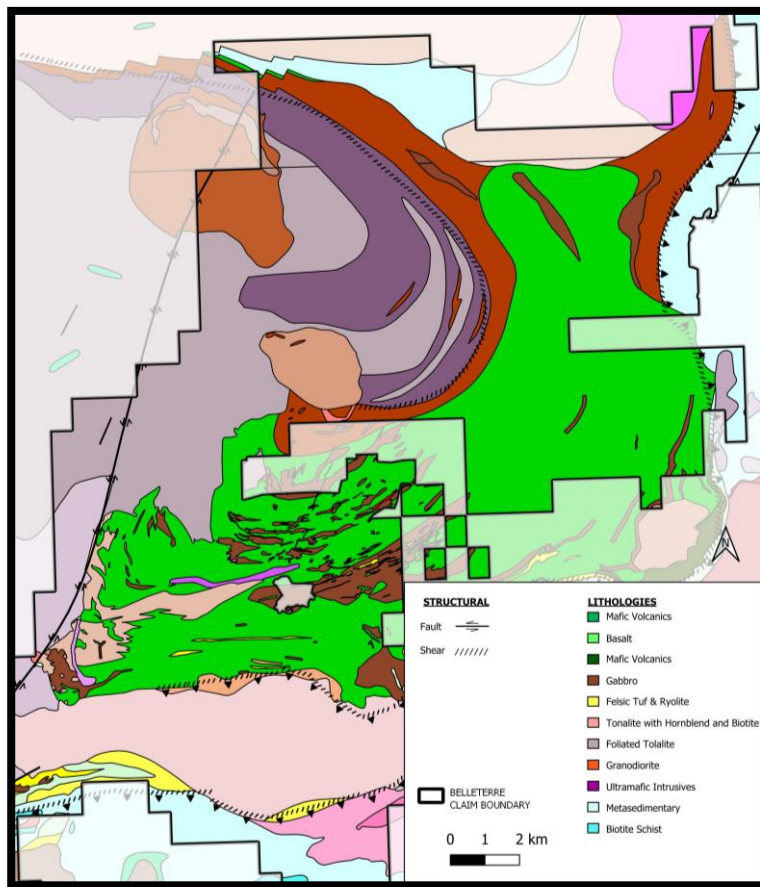
## OUR SYTEMATIC EXPLORATION APPROACH

- Compilation of historic DDH, surface mapping
- Regional structural reinterpretation
- Geochemistry signatures of the camp
- Refreshing the 1950's government geology mapping
- Vior validation at surface
- Vior validation at depth with initial drilling (2021/22)
- Renewed exploration targeting model

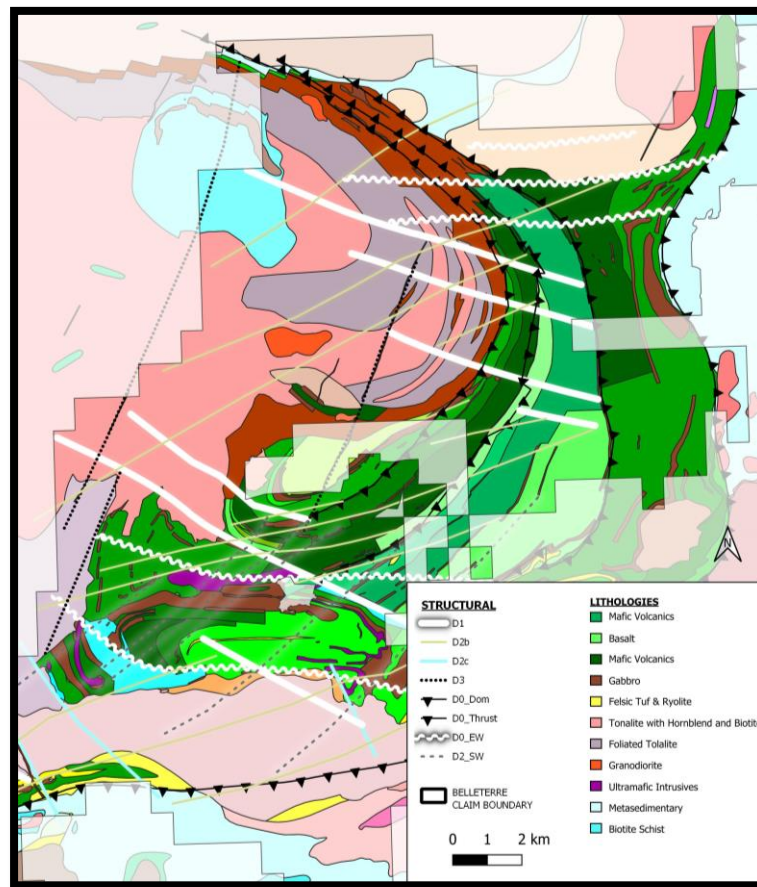




# VIOR'S NEW GEOLOGICAL MAP OF BELLETERRE CAMP



**BEFORE**  
(circa 1951 mapping)



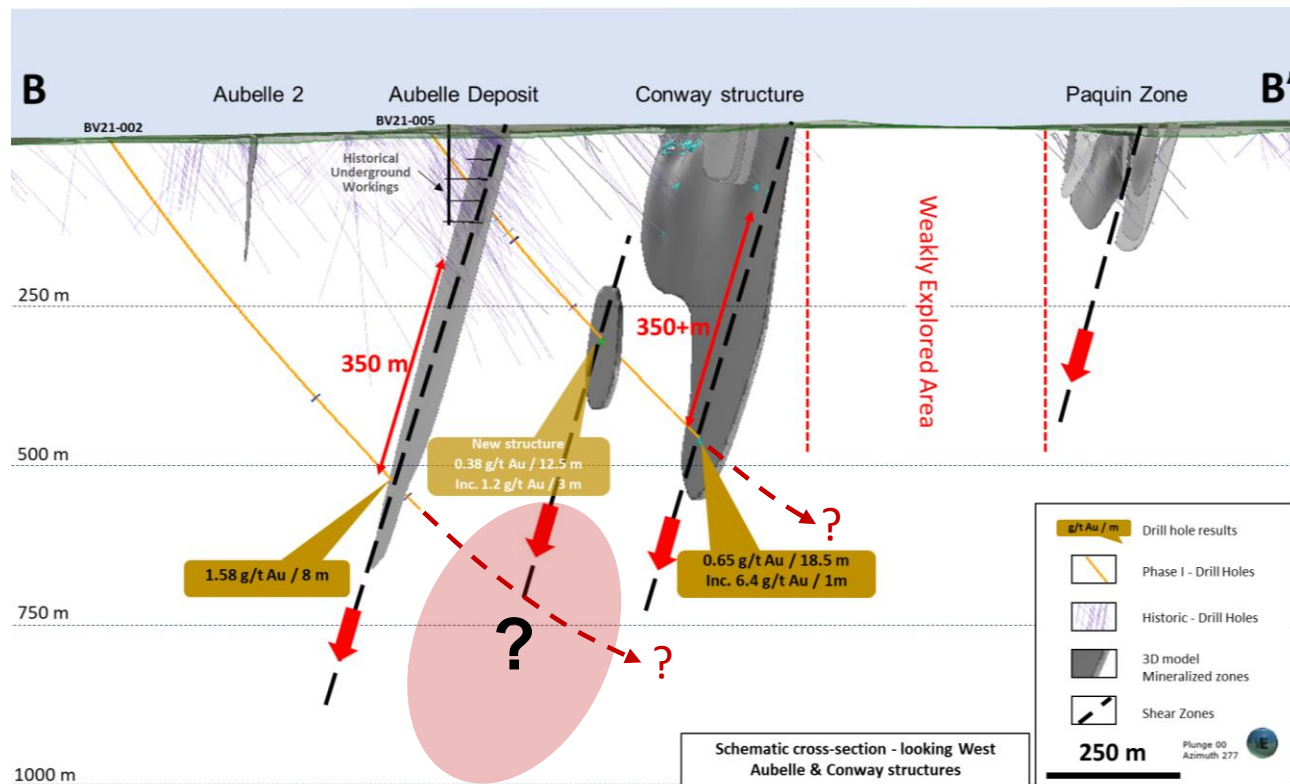
**UPDATED**  
(2023 Vior mapping)

# Belleterre – Extension of the mineralization at depth

## Belleterre Mining Trend

*Phase 1 & 2 drill program results demonstrated wider mineralized intercepts, suggesting gold-bearing structures are thickening at depth.*

*The 2021/22 drilling represents an important step towards advancing the project and demonstrates the strong exploration potential.*





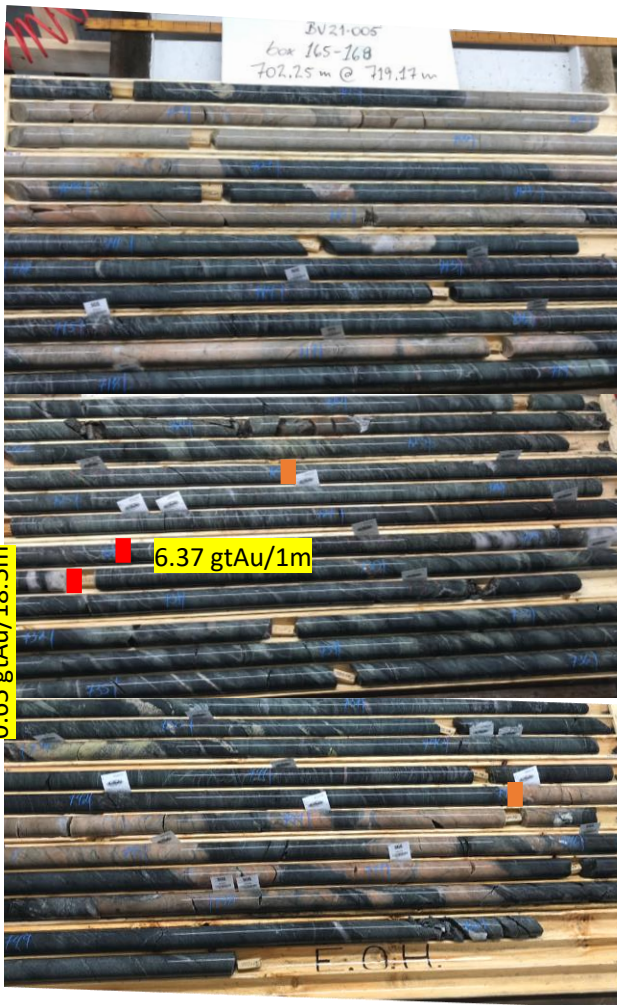


# HOLE BV21-005

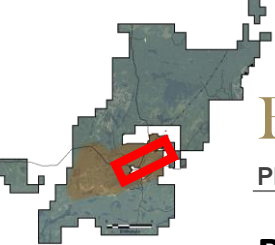
Gold  
background  
d  
at E.O.H.

0.65 gAu/18.5m

6.37 gAu/1m







# Belleterre Project – Belleterre Mine Trend

PHASE I & II DRILL PROGRAM : RESULTS



## BV22-011 & 13 : Belleterre – 12W Mineralisation



*Mineralization along strike unveils quartz veining associated with locally VG.*

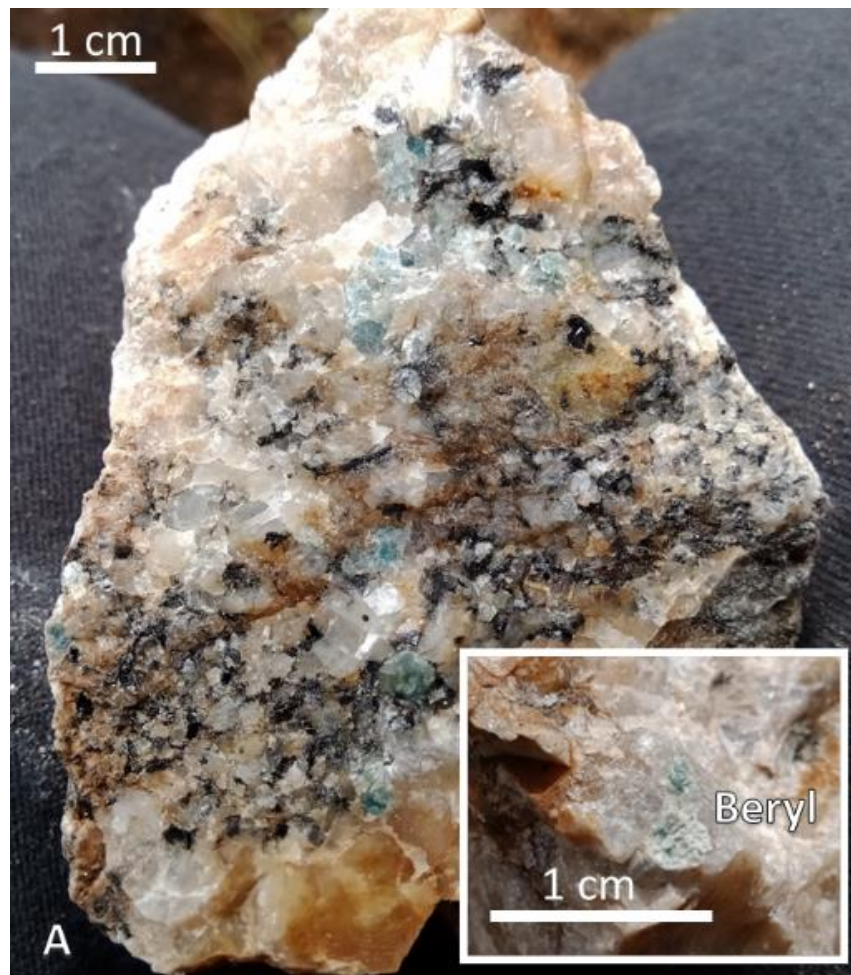
*Deformation is intense and gold is mainly concentrated at the footwall and hanging wall of the 12W deformation zone.*

# Belleterre Project – Exploration Timeline





# Belleterre Lithium Project - 2023 prospection



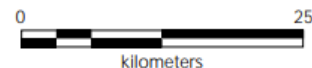
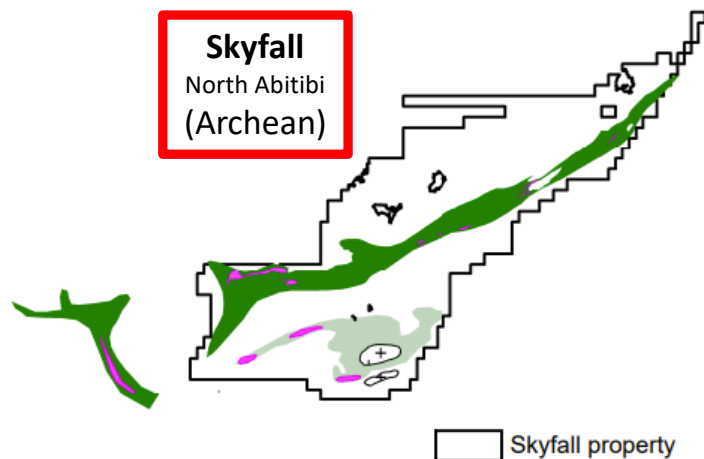
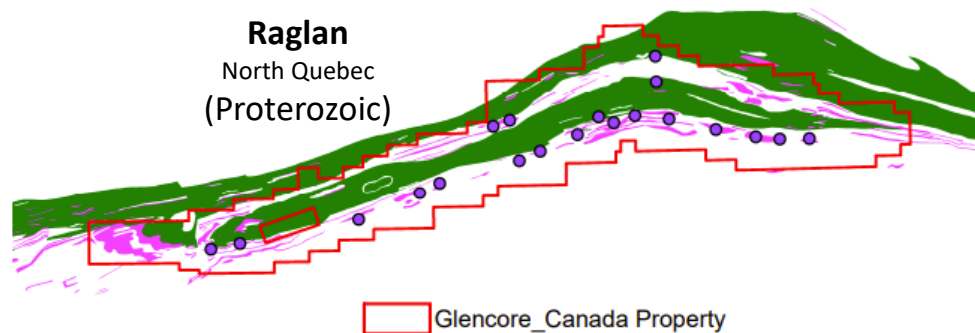
# Skyfall Nickel Project – Span and Geologic Analogs

**Kambalda**  
Australia  
(Archean)

1.6Mt of nickel metal\*

\*Approximate Production

Source – Website Mincor Resources

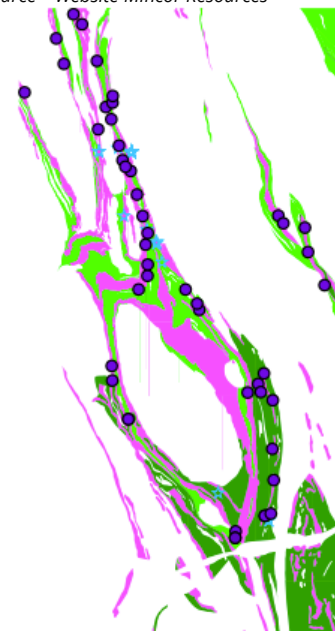


• Ni Deposit and Showing

Komatiite and ultramafic intrusive

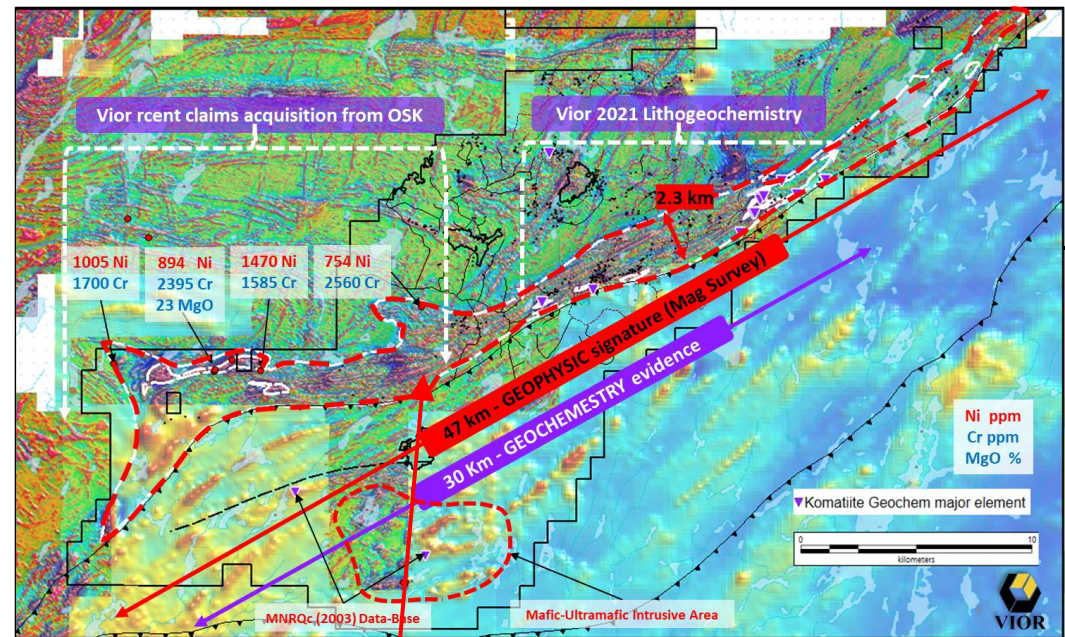
Mafic / Ultramafic sequence

Amphibolite (V3-V4) Paragneiss domaine





# Early Recon of a New Geological Environment

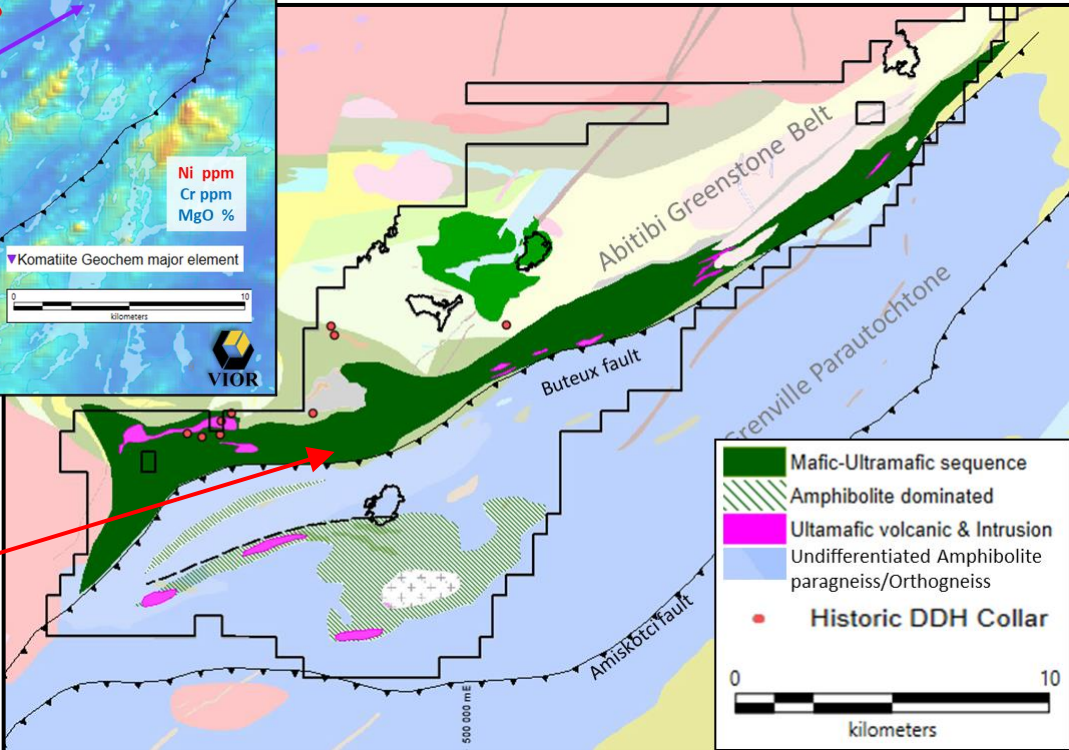


Geophysical signature & Geochemical evidence

Mafic/Ultramafic Sequence  
fertile for Nickel deposits

High technical expertise

District-Scale Geology

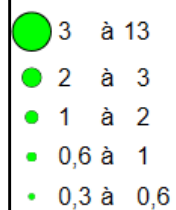


# Skyfall Nickel Project – 2023 prospection

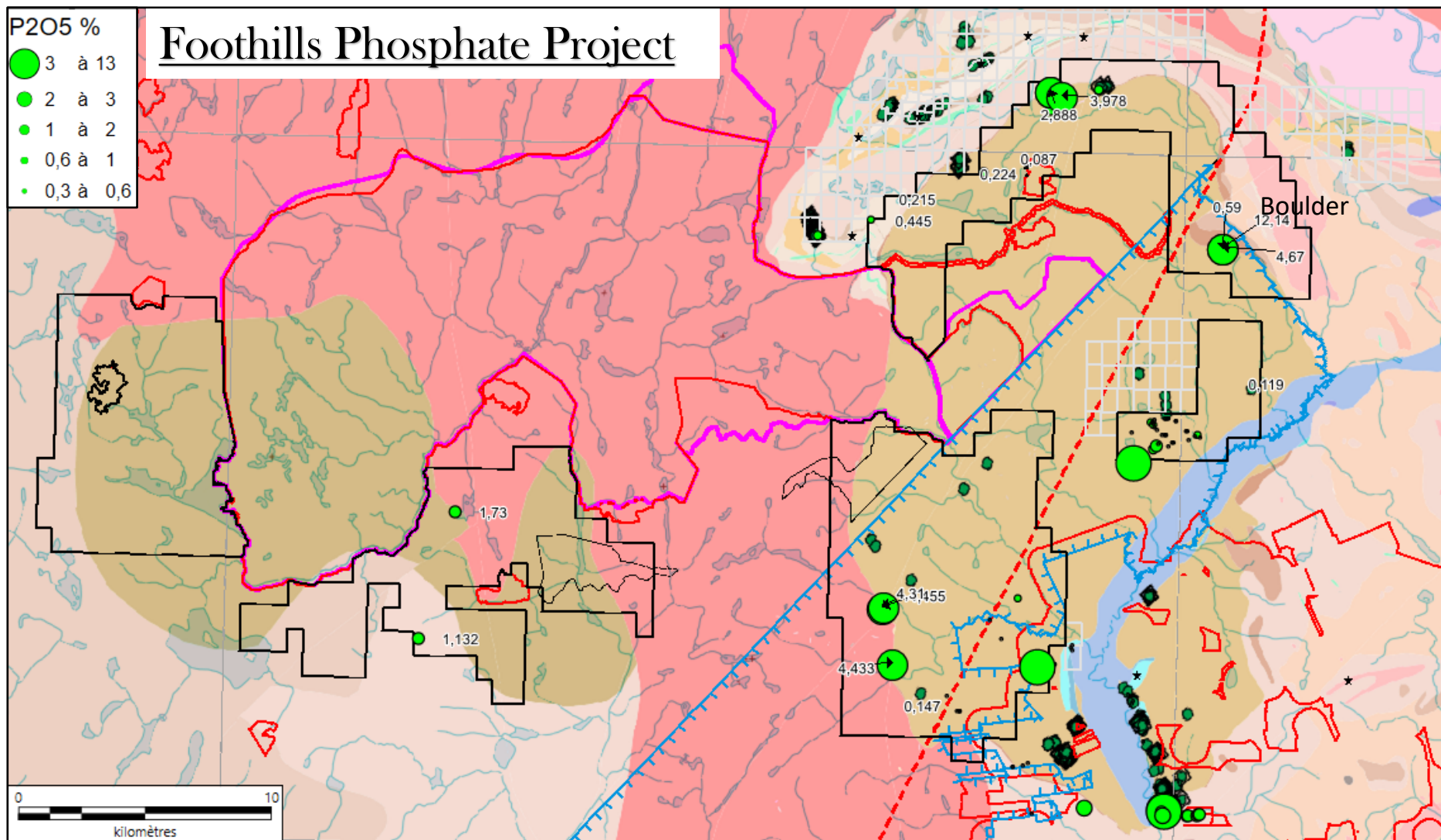




P2O5 %

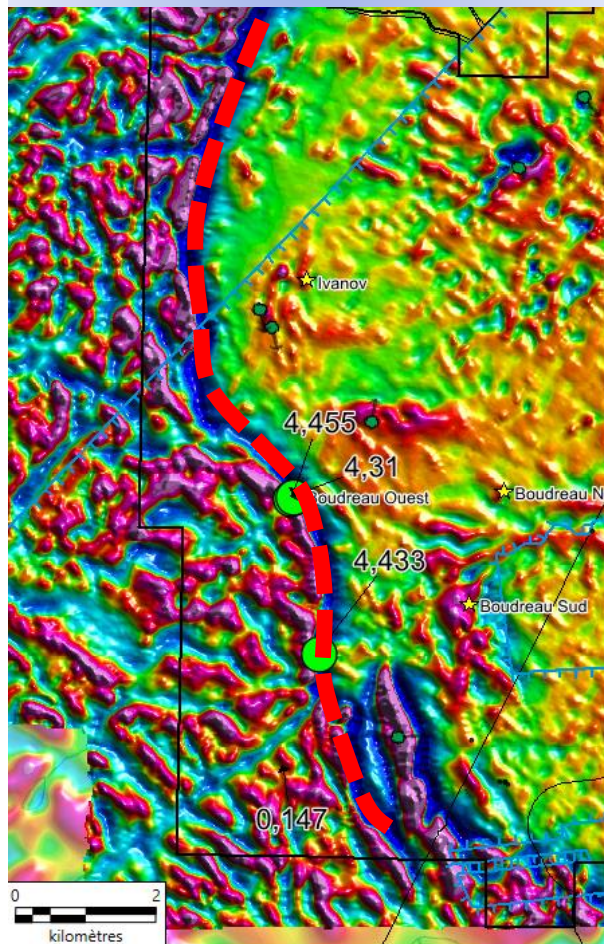


# Foothills Phosphate Project



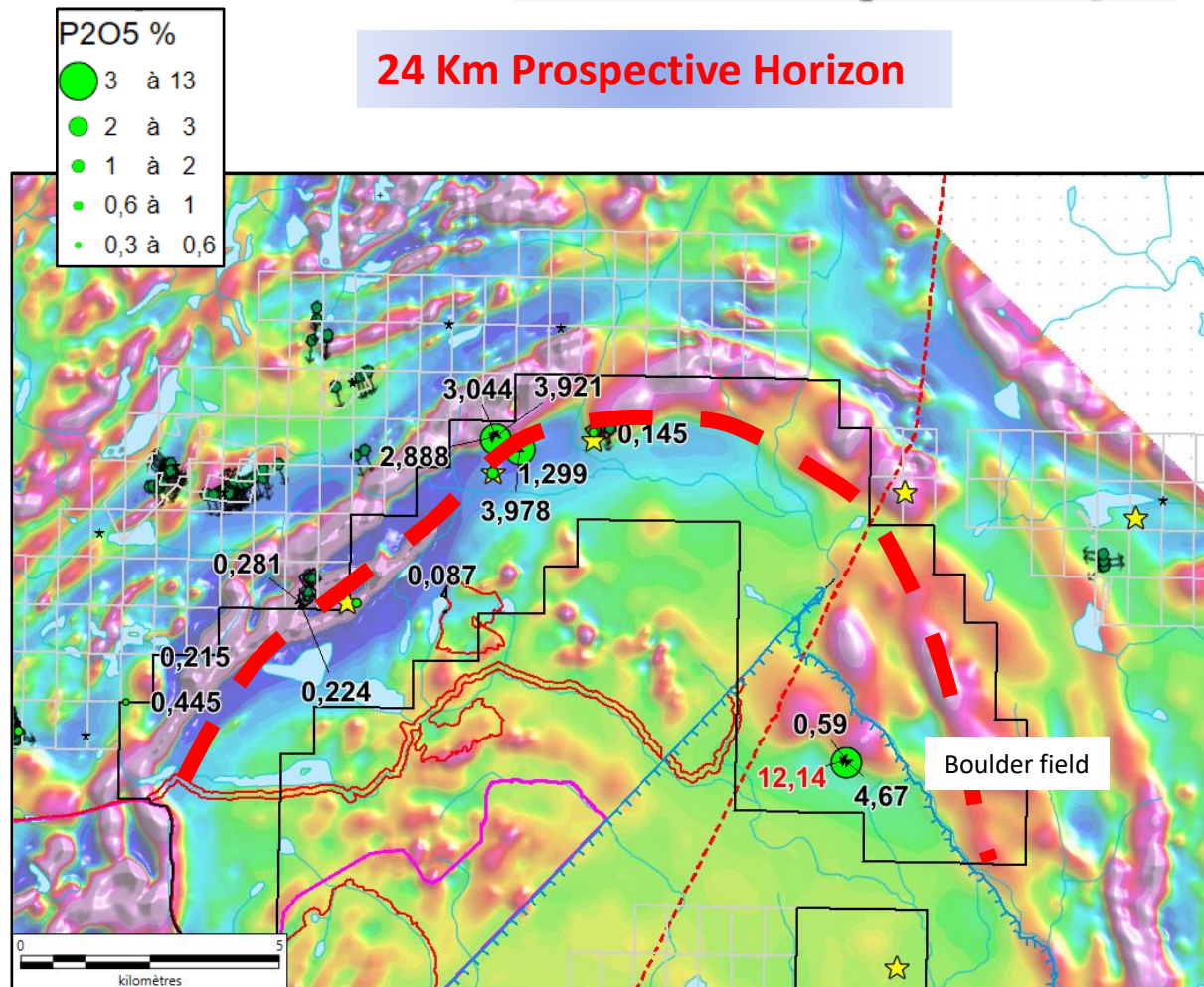


## 12.5 Km Prospective Horizon



## Foothills Phosphate Project

### 24 Km Prospective Horizon



# Foothills Phosphate Project - Rock samples



Example of OAGN at the southwestern rim  
sample with 25% ilmenite and 10% apatite on the  
outcrop next to the one who returned 4.455%  $P_2O_5$



Example of apatite-rich Nelsonite  
from the boulder who who returned 12.14%  $P_2O_5$   
(around 40% of apatite grains)