

VIOR INC. JUNIOR MINING EXPLORER



TSXV – VIO
OTCQB – VIORF
FRANKFURT – VL51

Corporate Presentation

May 2023



Because we're a responsible Company, here's the legal

Statements in this document, to the extent not based on historical events, constitute forward-looking statements. Forward-looking statements include, without limitation, statements evaluating market and general economic conditions in the preceding sections, and statements regarding future-oriented costs and expenditures.

Investors are cautioned not to place undue reliance on these forward-looking statements, which reflect management's analysis only as of the date thereof.

These forward-looking statements are subject to certain risks and uncertainties that could cause actual results to differ materially.

Such risks and uncertainties with respect to the company include the effects of general economic conditions, changing foreign exchange rates and actions by government authorities, uncertainties associated with legal proceedings and negotiations, industry supply levels, competitive pricing pressures and misjudgements in the course of preparing forward-looking statements.

Vior Corporate Profile

Why Vior Inc.



**VALUE BASED ON
STRONG FUNDAMENTALS**

1. STRATEGY

**Exposure to
Multiple High
Potential Gold
& Strategic
Metals
DISCOVERIES**

A Discovery is the Key driver for value creation in an industry known for a low rate of exploration success;

2. SAFE JURISDICTIONS

Quebec & Nevada

Jurisdictions ranking at the top of Fraser Institute Survey 2022

3. EXPERTISE

**Highly Committed
Management Team**

100+ years experience in the industry
14%+ equity position ownership

4. SUPPORT

**Strong Financial &
Technical Partners**

Osisko Mining, SOQUEM, FSTQ, SIDEX, SDBJ, Desjardins, Iluka Resources Ltd., Ridgeline Minerals Corp.;

5. DIVERSIFICATION

Exploring & Investing

Increased exposure & reduced corporate risk profile toward new discoveries.

Vior Corporate Profile

Who we are

BOARD OF DIRECTORS

Independent **CLAUDE ST-JACQUES** - Chairman

MARK FEDOSIEWICH - President & CEO

Independent **ÉRIC DESAULNIERS**

Independent **CHARLES-OLIVIER TARTE**

LAURENT EUSTACHE - Executive VP



MANAGEMENT

MARK FEDOSIEWICH – President & CEO

LAURENT EUSTACHE – Executive VP

INGRID MARTIN – CFO

TECHNICAL ADVISORS

CHAD PETERS, P.Geo - Technical Advisor

MARC L'HEUREUX, P.Geo. - Technical Advisor

BY THE NUMBERS

Working Capital * \$4.825 M

Shares Outstanding * 101,455,017

Market Capitalization* \$19.277 M
@ \$0.19/share

Major Shareholders

Osisko Mining Inc. ~ 13.6%
Partially Diluted ~ 14.70%

Management ~ 14.0 %

Quebec Institutions ~ 18.0%

Close Strategic Holders ~ 22.0%



* As of March 31, 2023 (Approx.)

Vior's Asset Allocation & Diversification

Exposure to major exploration projects in North America



VIOR'S PROJECT GENERATION CRITERIA

- 1- Mining Friendly jurisdictions in North America
- 2- Proximal to an existing mine/or an advanced project
- 3- Robust infrastructure nearby with year round accessibility
- 4- Potential for rapid advancement

DISCIPLINE & FOCUS

Vior's disciplined capital and human resource allocation process allows for a focused commitment to its flagship Belleterre project



VIOR - Operations

VIOR CAPITAL ALLOCATION

Quebec

BELLETERRE
GOLD & LITHIUM

PARTNERSHIP WITH **SOQUEM**

Quebec

SKYFALL
NICKEL & GOLD

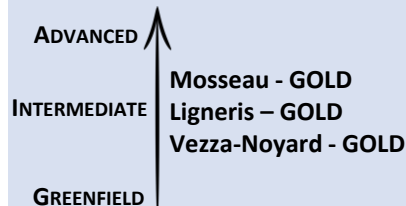
DISTRICT-SCALE PROJECTS

VIOR - Diversification

SEEKING PARTNERS

Quebec

PORTFOLIO OF PROJECTS



PASSIVE STRATEGY

Nevada

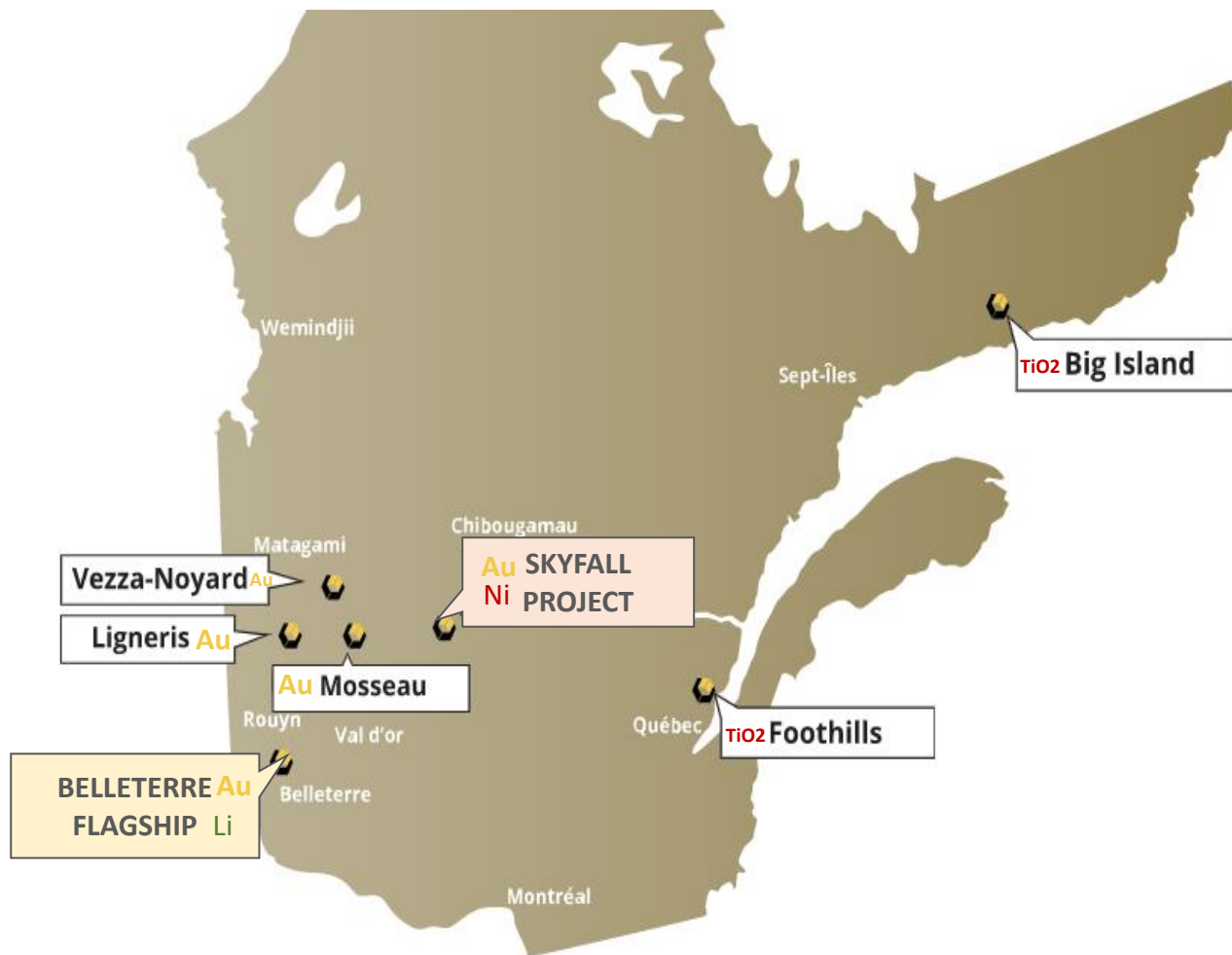
STRATEGIC INVESTMENT



VIOR owns 3.642 M Shares

Projects – Overview

Exposure to other major exploration projects in Quebec





1. HIGH POTENTIAL GOLD PROJECT

Using a systematic exploration process in the never before consolidated & past producing high grade Belleterre mining camp.

2. LOWER RISK EXPLORATION OPPORTUNITY

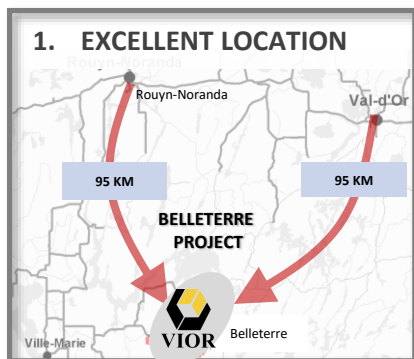
Flagship Belleterre gold project is the excellent result and example of Vior's project generation criteria.

3. PROVEN VALUE CREATION STRATEGY

M&A ACTIVITIES from previous consolidated past producing camps:

- Osisko (Cdn. Malartic mine)
- Detour Gold (Detour mine)
- Integra (Lamaque mine)

Belleterre Gold - Strengths & Opportunities



2. PROVEN MINING BELT

- Past producing High-Grade Belleterre Gold Mine ~ 800Koz Au @ 10.7g/t Au (MERN)
- Up to 20 known High-Grade Gold Veins

3. FIRST EVER CONSOLIDATION of THE BELLETERRE BELT

- District-Scale project : 1,017 claims (572 Km²)-almost 10 times the size of Manhattan Island!
- Control of over 80% of the Belleterre belt

4. UNDEREXPLORED

- Multi-deposit potential
- Limited exploration at depth and has never been Explored using modern exploration techniques

5. COMPETITIVE ADVANTAGES

- High-grade gold mineralization
- Low cost of Exploration
- Low threshold for economic potential
- Easy access & year round drilling
- Excellent infrastructure

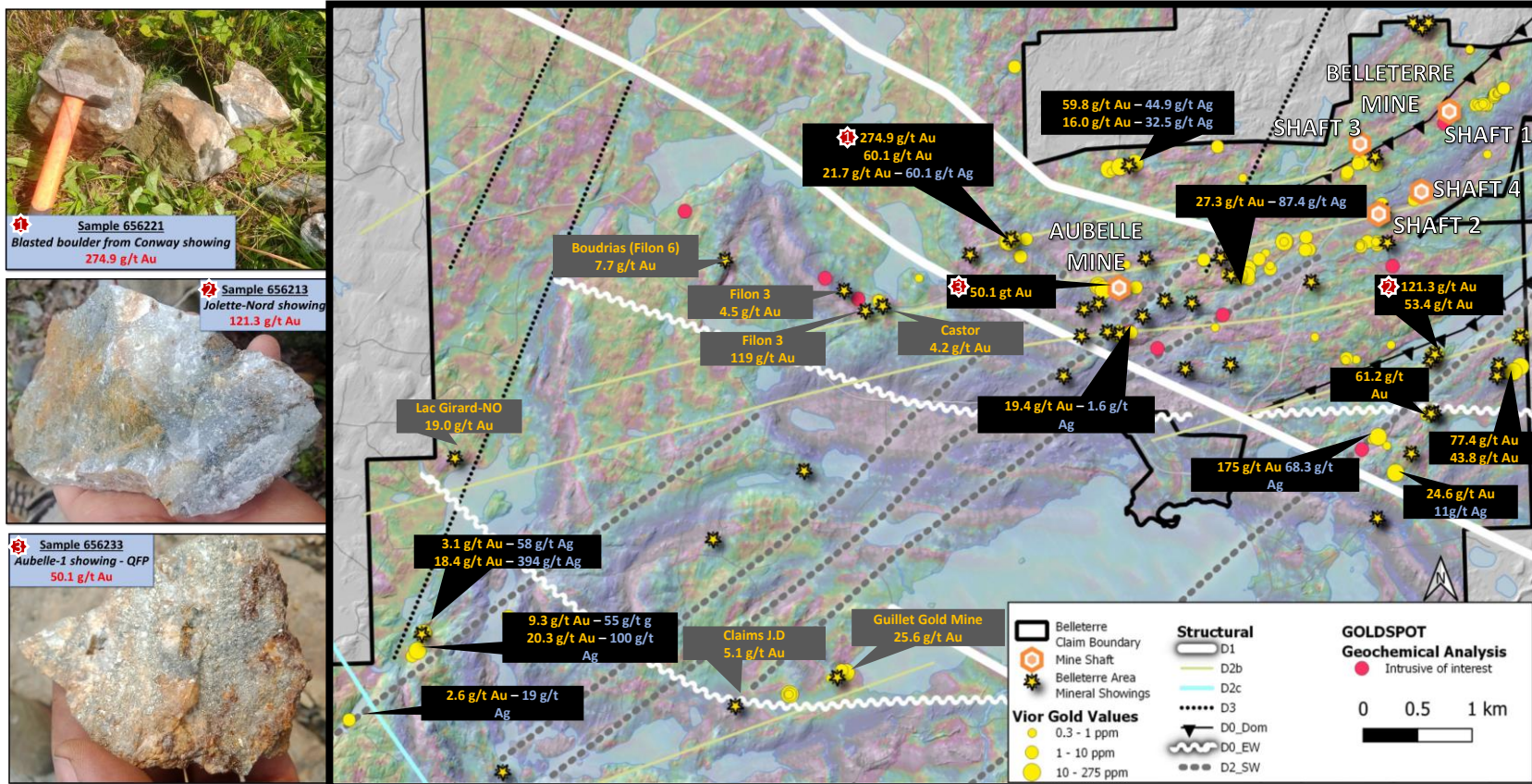


*Where there's a lot of smoke there's
often a big fire ...*

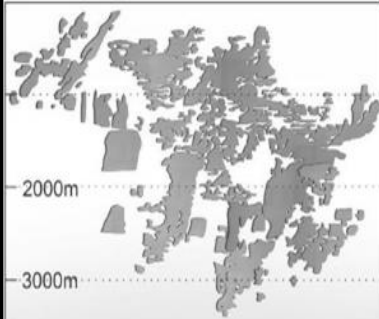


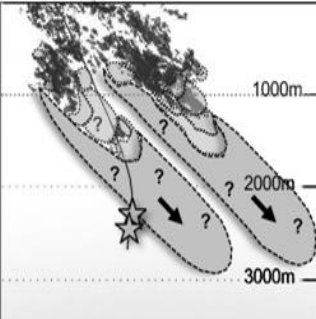
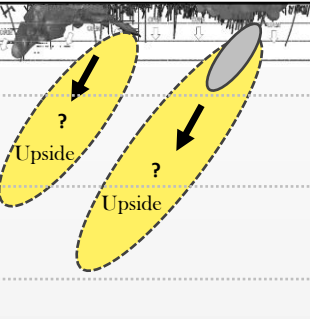
- Extensive footprint and distribution of surface gold showings
- Old-fashioned historical mining production
- Limited past exploration due to:
 - Piecemeal land ownership leading to inadequate exploration strategies, resulting in a history of insufficiently explored deposits
 - Shallow historical drilling has not tested the true potential depth of known mineralization

Belleterre Project -Gold Distribution - Brownfield area

12km of strike (Vior surface workings 2021-2022)



Value Creation per vertical metres in Historic High-grade Mining Camp

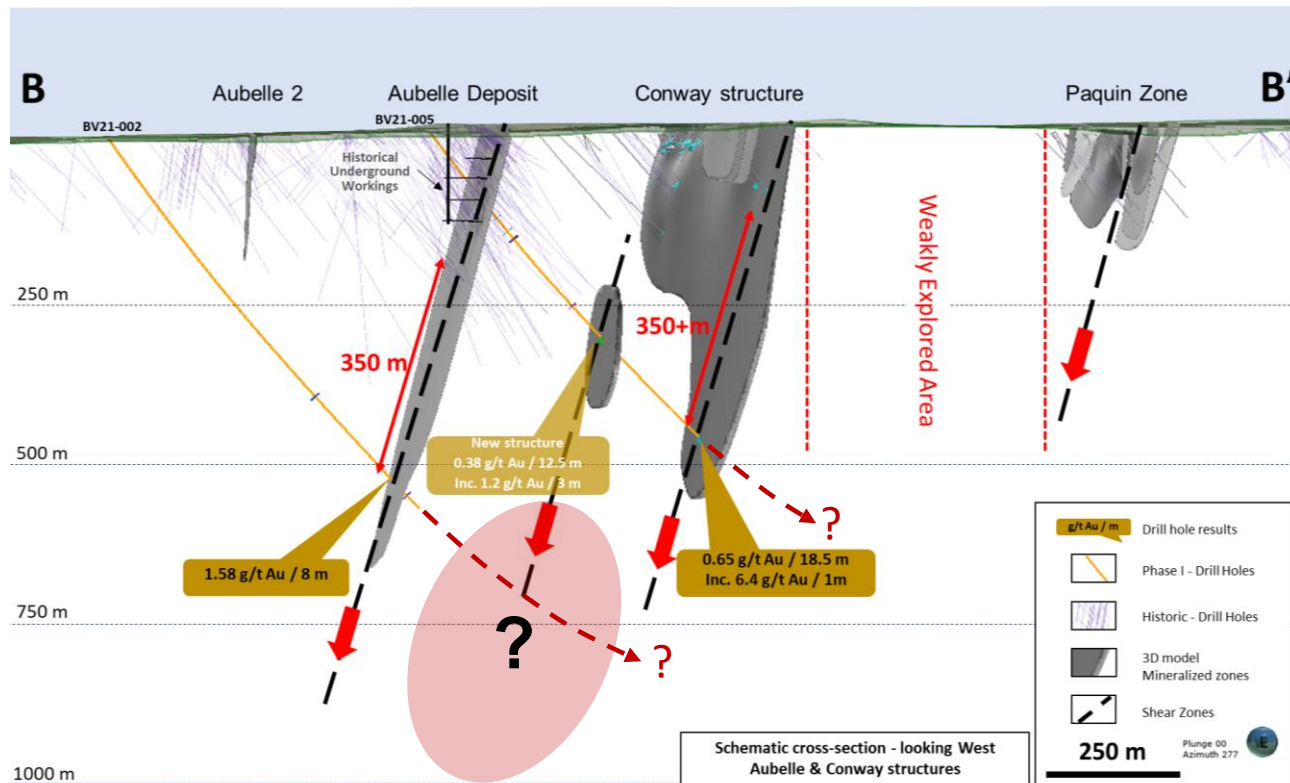
RED LAKE (1949) Historical Production 23 M oz Au 2.1 M Proven & Probable	MACASA (1933) Historical Production 5 M oz Au 2.2 M Proven & Probable	LaRONDE (1967) Historical Production 6 M oz Au 3.1 M Proven & Probable	WINDFALL (2022) Resource Estimate 7 M+ oz Au	BELLETERRE (1937) Historical Production 800 K oz @ 10.7g/t Au (MERN)
				
<ul style="list-style-type: none"> • VERTICAL DEPTH : 3100m • Min. MINERAL WIDTH : 2m 	<ul style="list-style-type: none"> • VERTICAL DEPTH : 2000m • Min. MINERAL WIDTH : 2m 	<ul style="list-style-type: none"> • VERTICAL DEPTH : 3500m • Min. MINERAL WIDTH : 5m 	<ul style="list-style-type: none"> • VERTICAL DEPTH : 1600m • Min. MINERAL WIDTH : 2m 	<ul style="list-style-type: none"> • VERTICAL DEPTH : 600m • Min. MINERAL WIDTH : 2m

Belleterre – Extension of the mineralization at depth

Belleterre Mining Trend

Phase 1 & 2 drill program results demonstrated wider mineralized intercepts, suggesting gold-bearing structures are thickening at depth.

The 2021/22 drilling represents an important step towards advancing the project and demonstrates the strong exploration potential.

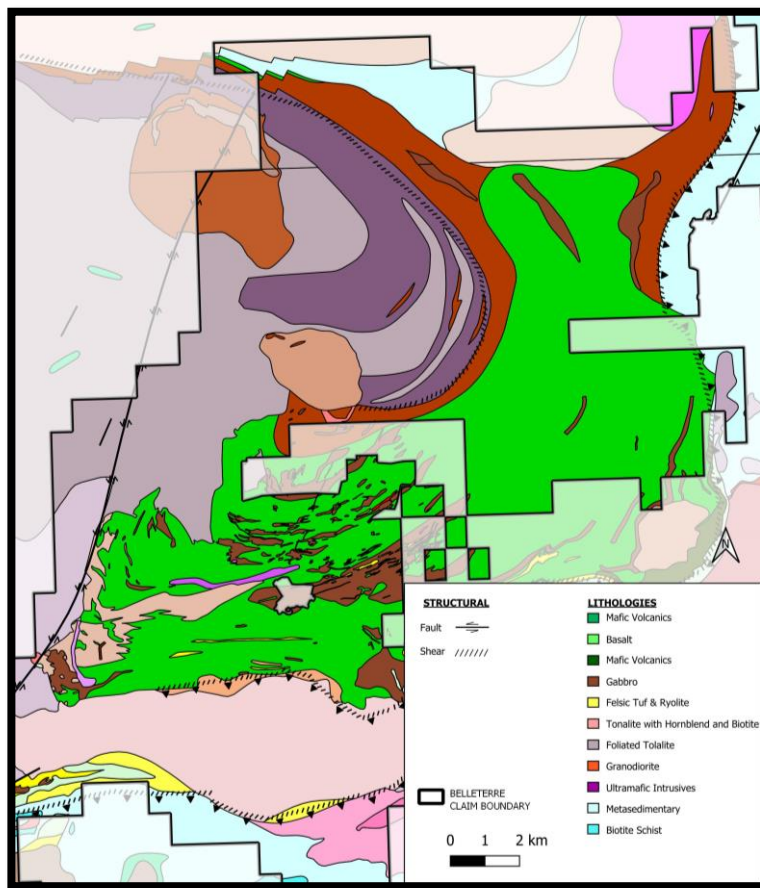


One of the last historic high-grade gold mining camps in the Abitibi that is still under-explored!!

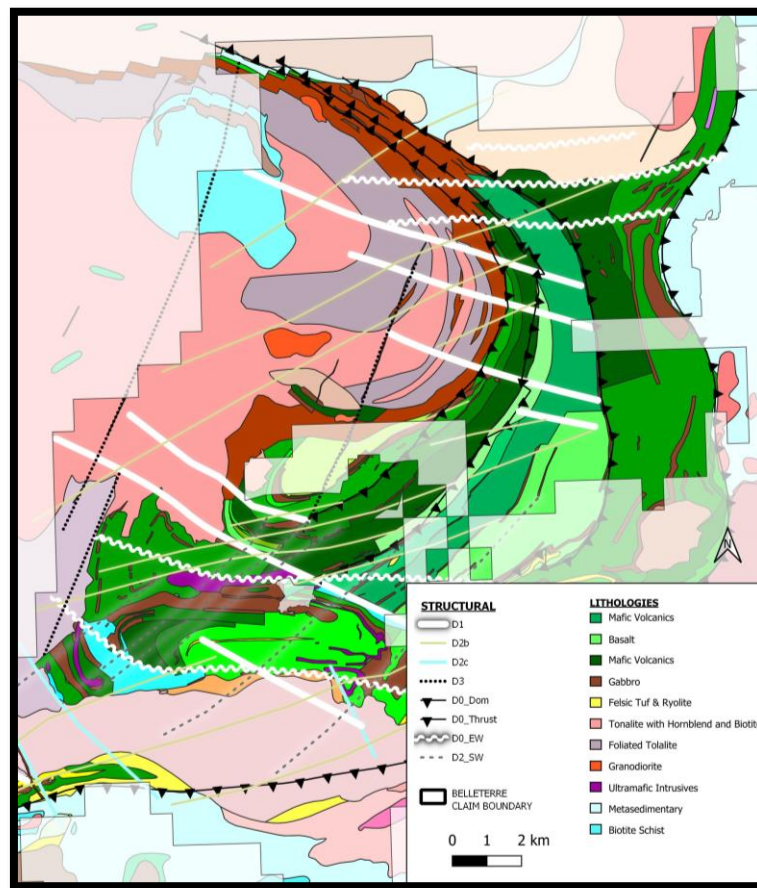
- Compilation of Historical DDH equalling ~ 150 000m of drilling
- New Vior field surface validation of initial drill phases
- Detailed regional litho-structural and geochemical analysis for the determination of mineralization signatures
- Revitalized geological model interpretation from previous 1950's Government Geology vs New Vior Geological interpretation



VIOR'S NEW GEOLOGICAL MAP OF BELLETERRE CAMP






BEFORE
(circa 1951 mapping)

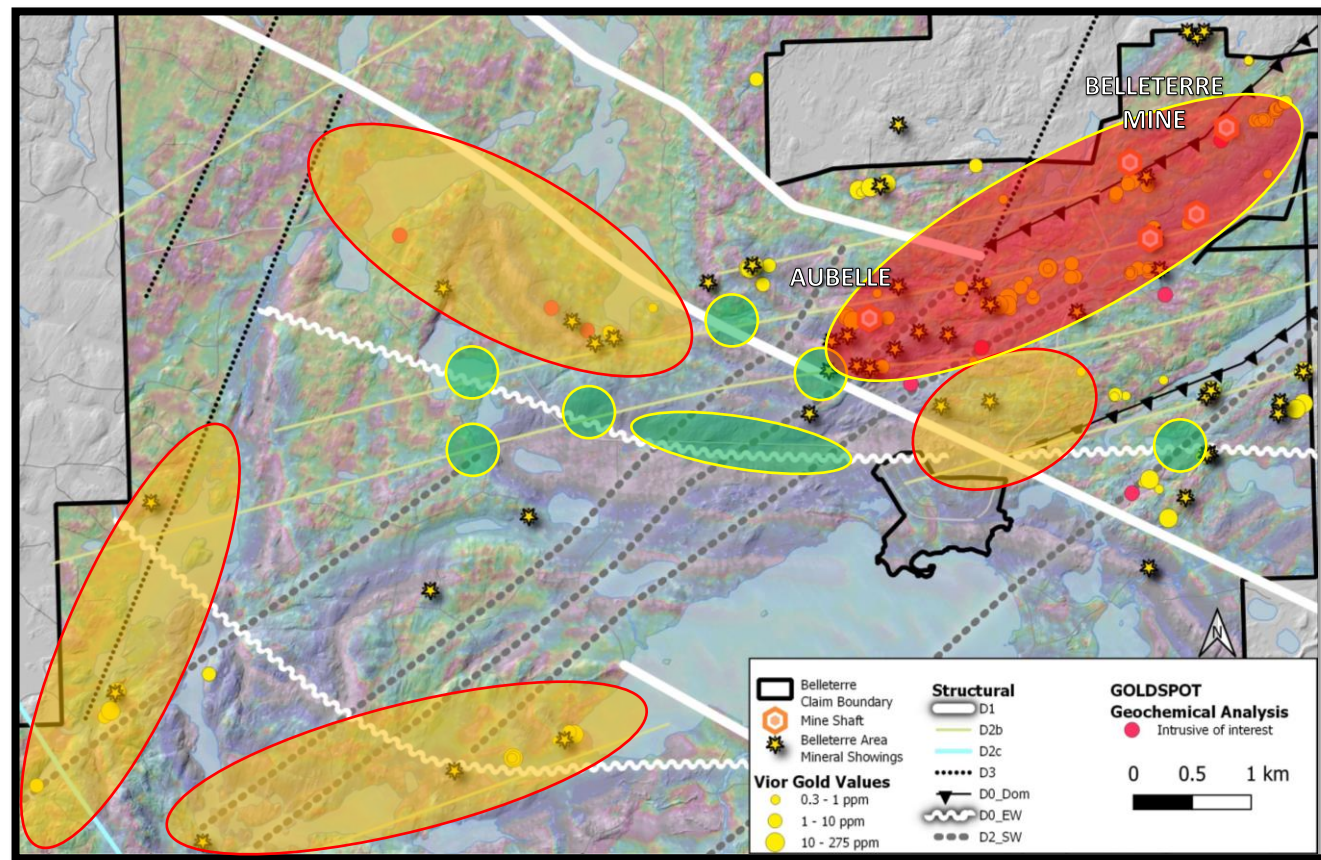


UPDATED
(2023 Vior mapping)



Belleterre Gold – Surface Exploration Targets-South

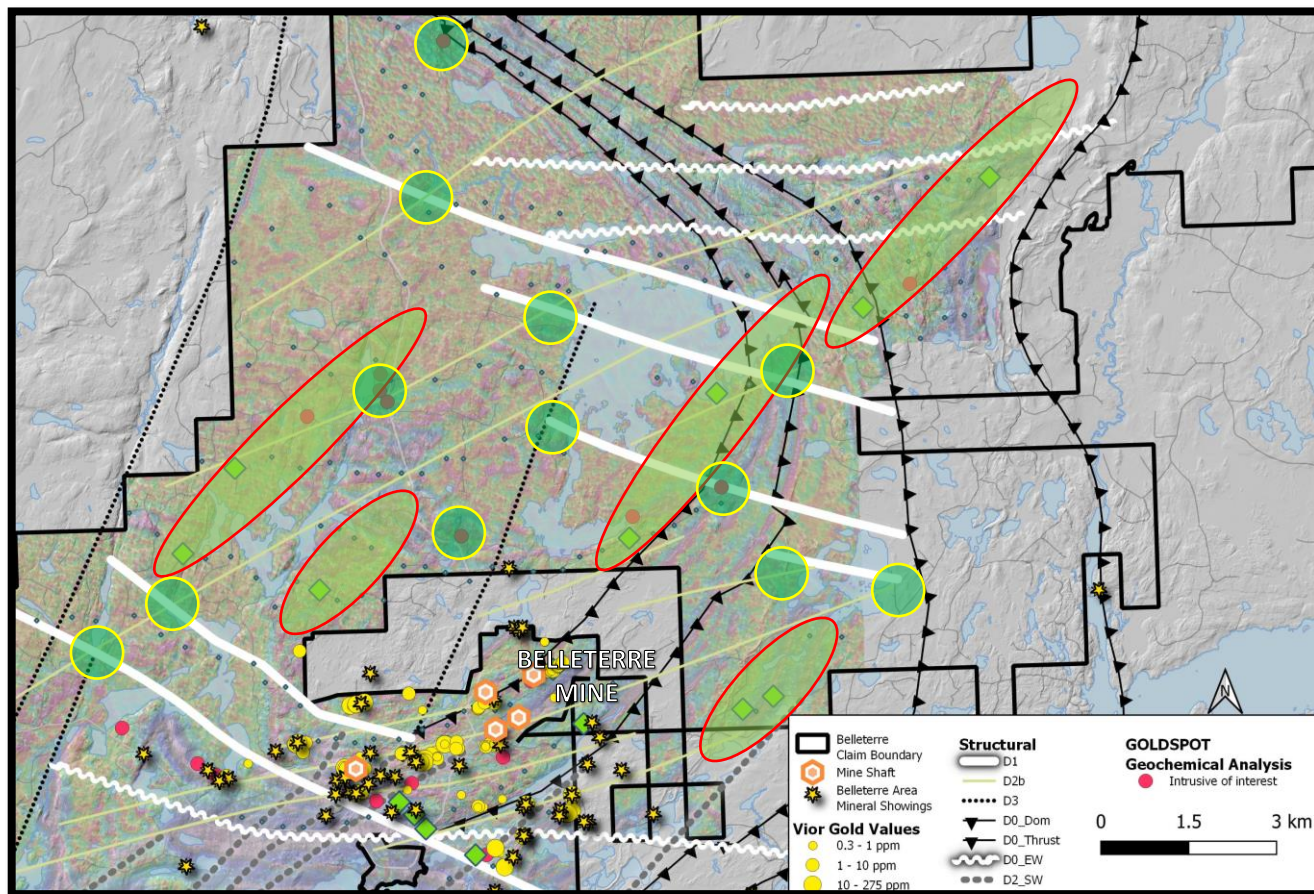
Brownfield Area

-  Belleterre Mine and Aubelle Zone Delineation
-  Detail Surface Exploration Validation
 - Sampling
 - Stripping
 - Channel Sampling
-  Structural Intersection Validation



Belleterre Gold – Surface Exploration Targets-North

-  Structural Intersection & Geochemical Validation
-  Till Anomalies (>30 Au grains)



Belleterre Lithium



**1. DISTRICT-SCALE
LITHIUM POTENTIAL**

**2. SIMILAR GEOLOGY
& PROXIMAL TO
AN ADVANCED LITHIUM
PROJECT**

**3. EXCELLENT LOCATION
&
YEAR-ROUND ACCESS**

Belleterre Lithium

District Scale Potential

Sayona Mining's TANSIM PROJECT

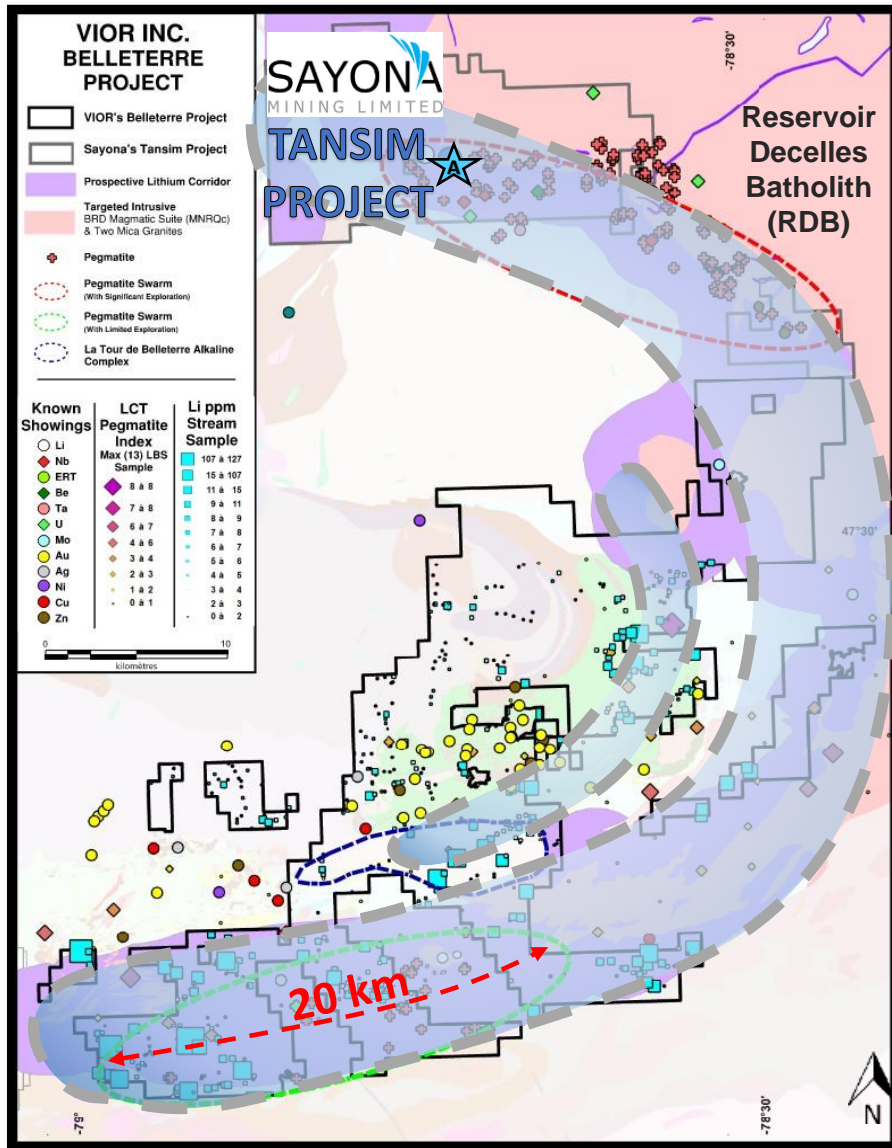
(Highlight Results)

1,05% Li₂O over 10,25 m VD-19-08

1,29% Li₂O over 12,35 m VD-19-05

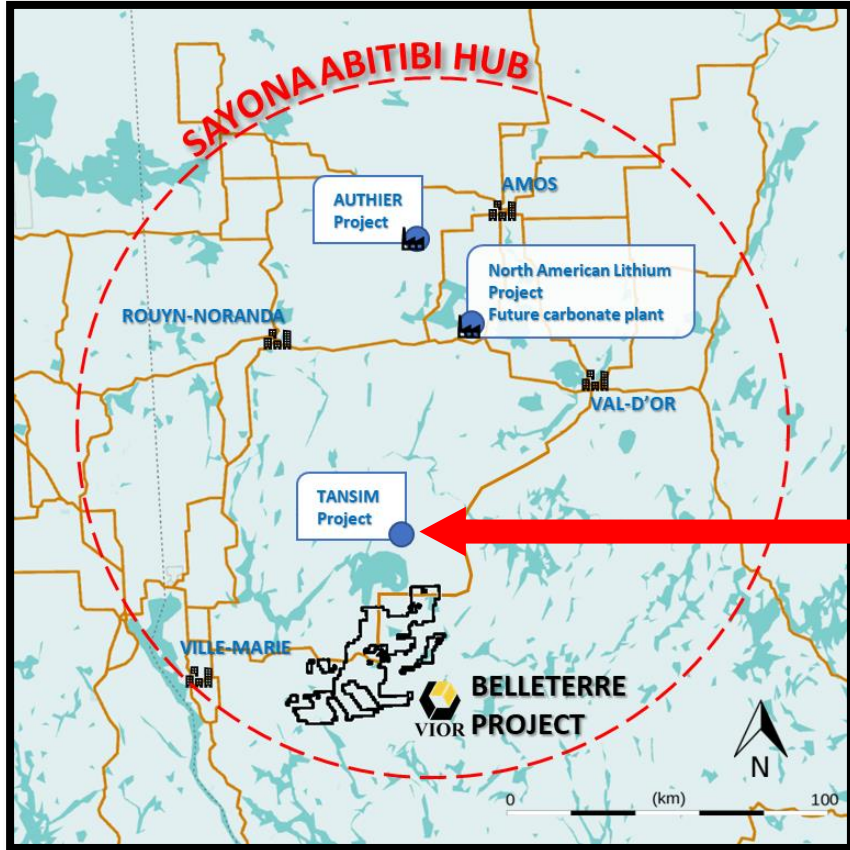
0,82% Li₂O over 43,7 m VD-19-10

Source SIGEOM GM71640

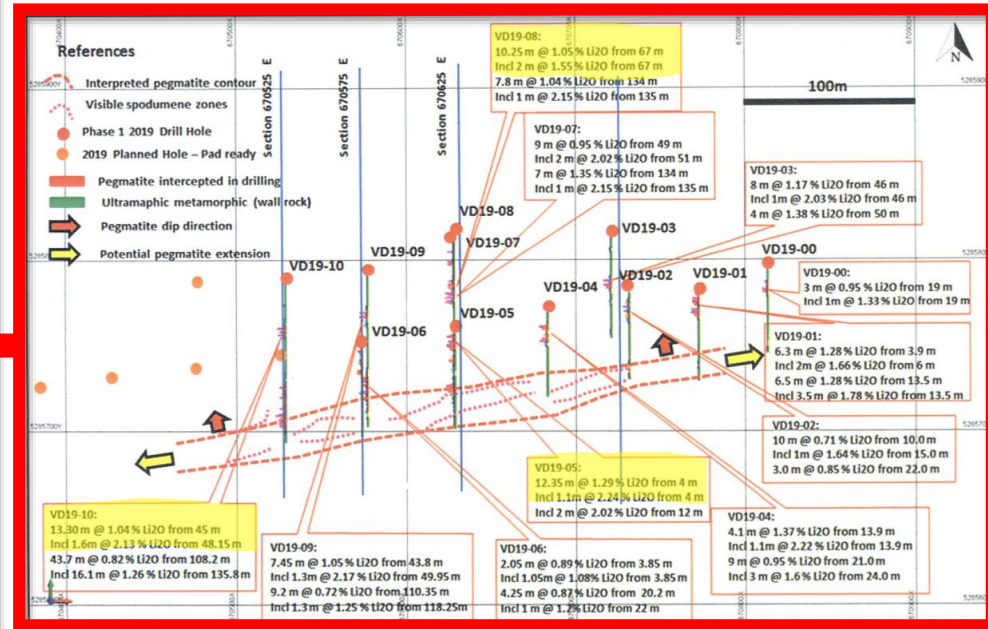


Belleterre Lithium

Sayona Lithium - **ABITIBI - Li HUB STRATEGY**



Advanced Tansim Li₂O Project



SKYFALL PROJECT

A potential District-Scale Nickel-Cobalt-PGE
Archean Sulphide-Rich Komatiite Type Deposit

Recently Signed DOA
with
SOQUEM
March/2023 (\$2.5M
over 2 years)

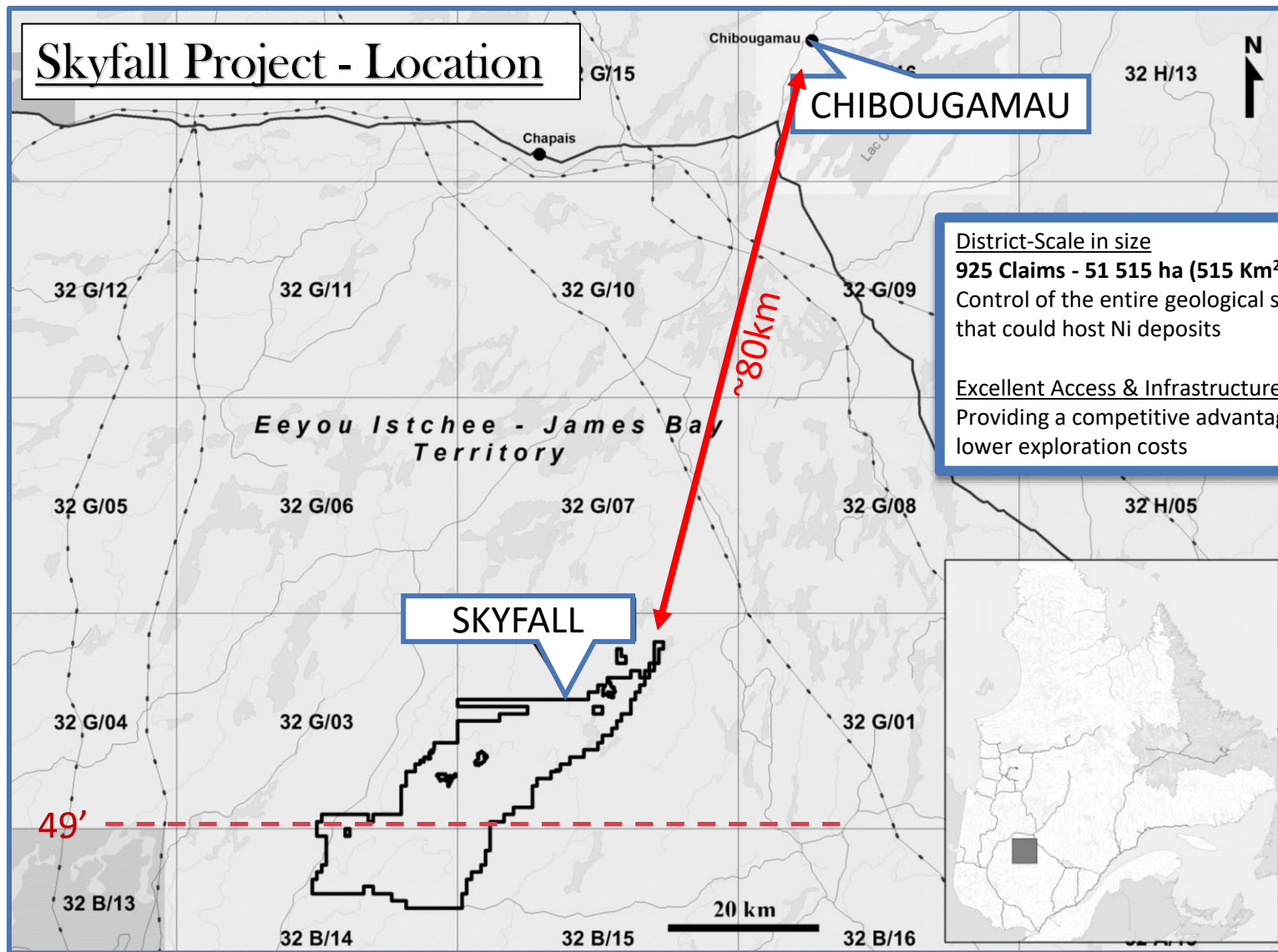
✓ Macro Environment

- Nickel market entering a super cycle driven mainly by EV demand
- Recent nickel supply growth in Indonesia will not directly benefit the North America market
- Nickel is now considered a Strategic Metal in the US and Canada

✓ Mining Environment

- Major producers on the lookout for projects and growth opportunities
- Canada implemented a new FT tax incentive for strategic metals, including Ni, to boost exploration budgets in the mining industry
- Market reaction on positive preliminary Exploration results for Junior company

Skyfall Project - Location



District-Scale in size

925 Claims - 51 515 ha (515 Km²)

Control of the entire geological sequence that could host Ni deposits

Excellent Access & Infrastructure Nearby

Providing a competitive advantage for lower exploration costs



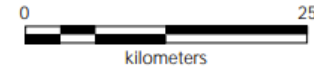
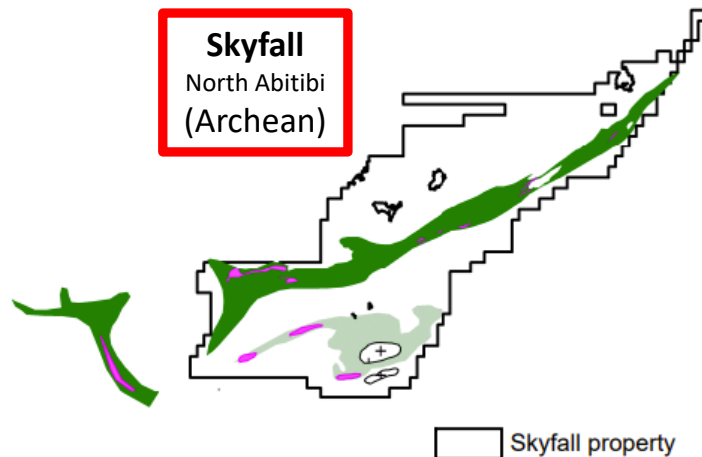
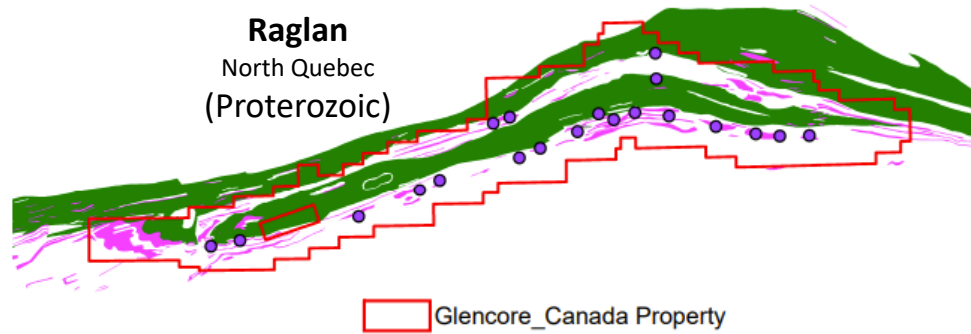
Skyfall Project – Span and Geologic Analogs

Kambalda
Australia
(Archean)

1.6Mt of nickel metal*

*Approximate Production

Source – Website Mincor Resources



• Ni Deposit and Showing

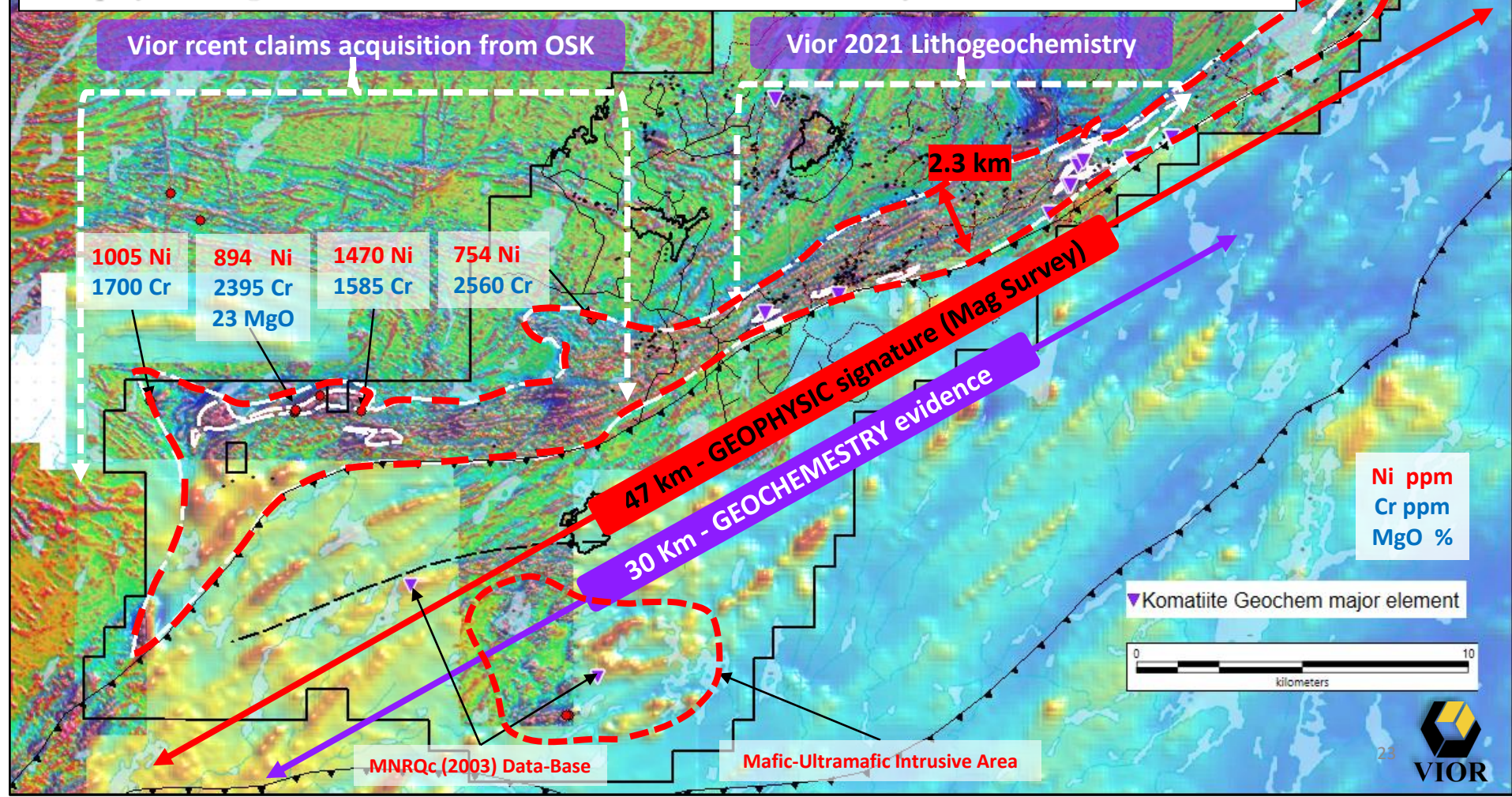
Komatiite and ultramafic intrusive

Mafic / Ultramafic sequence

Amphibolite (V3-V4) Paragneiss domaine

Skyfall Project - Early Recon of the Mafic/Ultramafic Sequence

Geophysical signature & Geochemical evidence (Lava Only)



The Vior Investment Opportunity

1. SOLID FOUNDATION

- ✓ Low-cost Corporate Structure
- ✓ Large Insider share ownership
- ✓ Exposure to multiple High Potential Projects in Safe Jurisdictions

2. PROVEN STRATEGY

- ✓ Significant new Discovery Potential
 - Belleterre Gold & Belleterre Lithium
 - Skyfall Nickel
- ✓ Osisko Mining Inc's Endorsement

3. CONTINUOUS NEWS FLOW

❖ Belleterre Gold - Rapidly Advancing

- ✓ 2023 Comprehensive field validation program that will include stripping
- ✓ Finalizing DDH targets for an **AGGRESSIVE 30,000m GOLD DRILL PROGRAM**

❖ Belleterre Lithium – Rapidly Advancing

- ✓ 2023 Comprehensive field validation program to confirm Lithium bearing Pegmatites for a potential Fall Drill Program

❖ Skyfall – Greenfield district-scale **Nickel Potential** located in the Abitibi Region

- ✓ \$2.5M Option and JV with SOQUEM - March 2023
- ✓ 2023 High Resolution EM survey and comprehensive field program

❖ Ridgeline Investment – Excellent upside from 6 high quality exploration projects in the US...Au/Ag/Cu



APPROVED



TSXV – VIO
OTC – VIORF
FRA – VL51



CONTACT

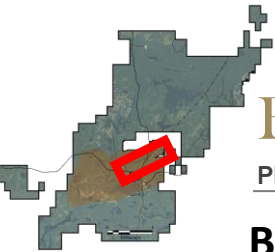
Mark Fedosiewich
mfedosiewich@vior.ca
+1 613 898 5052

vior.ca

Belleterre Project – Gold

2021 -2022 FIELD ACTIVITIES & INSTALLATIONS





Belleterre Project – Belleterre Mine Trend

PHASE I & II DRILL PROGRAM : RESULTS



BV21-002 : Aubelle - Mineralisation & Gold distribution

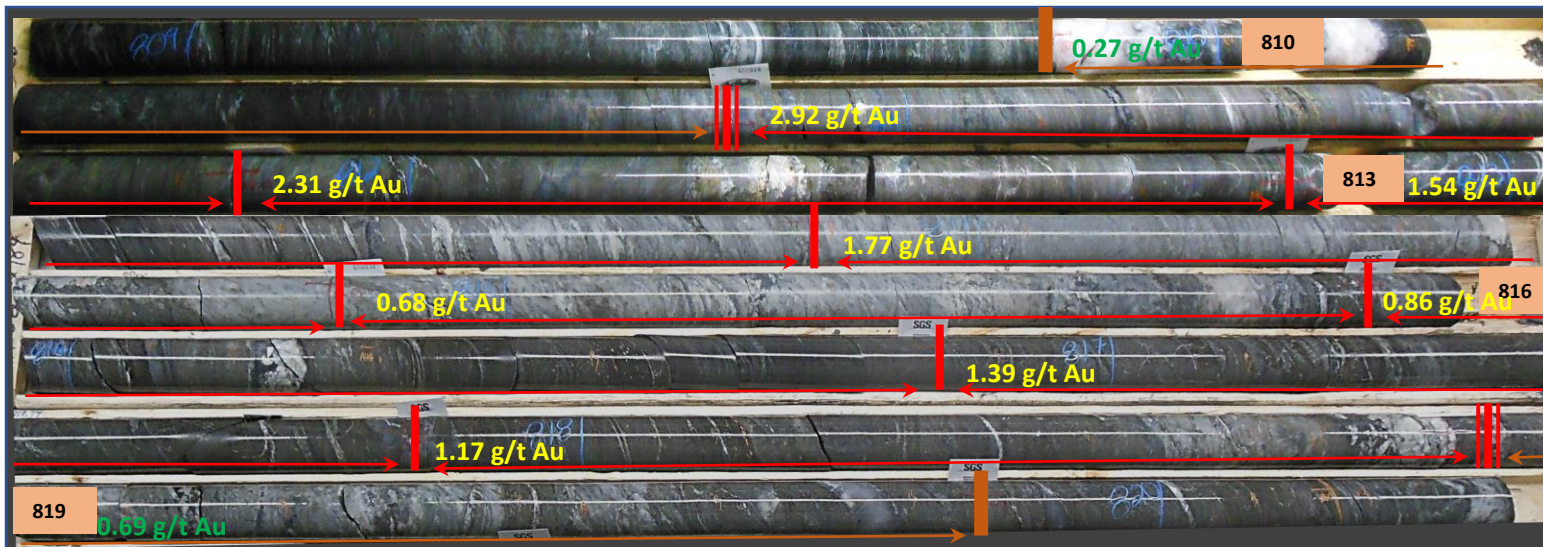
From	To	Length	Au g/t
809.83	810.83	1.0	0.269
810.83	811.83	1.0	2.916
811.83	812.83	1.0	2.313
812.83	813.83	1.0	1.54
813.83	814.83	1.0	1.774
814.83	815.83	1.0	0.683
815.83	816.83	1.0	0.858
816.83	817.83	1.0	1.393
817.83	818.83	1.0	1.167
818.83	819.83	1.0	0.687
819.83	820.83	1.0	0.375

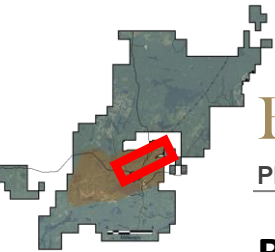
1.58 g/t Au / 8 m



Mineralization at depth unveils quartz flooding associated with PY & PO, and looks like a classic Archean Lode gold zone.

Deformation is highly pervasive with gold being well distributed over the entire intersection.





Belleterre Project – Belleterre Mine Trend

PHASE I & II DRILL PROGRAM : RESULTS



BV22-011 & 13 : Belleterre – 12W Mineralisation



Mineralization along strike unveils quartz veining associated with locally VG.

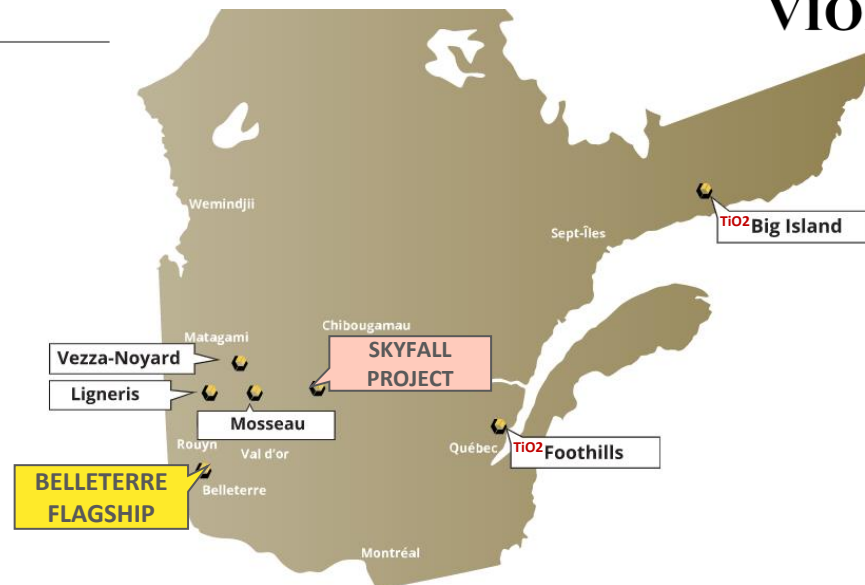
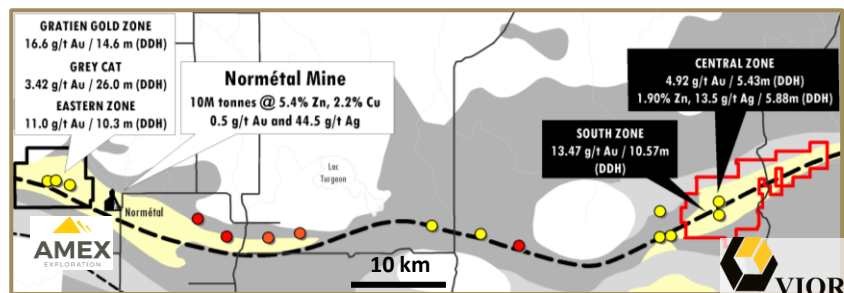
Deformation is intense and gold is mainly concentrated at the footwall and hanging wall of the 12W deformation zone.

Projects – Overview

EXPOSURE TO OTHER MAJOR EXPLORATION PROJECTS IN QUEBEC



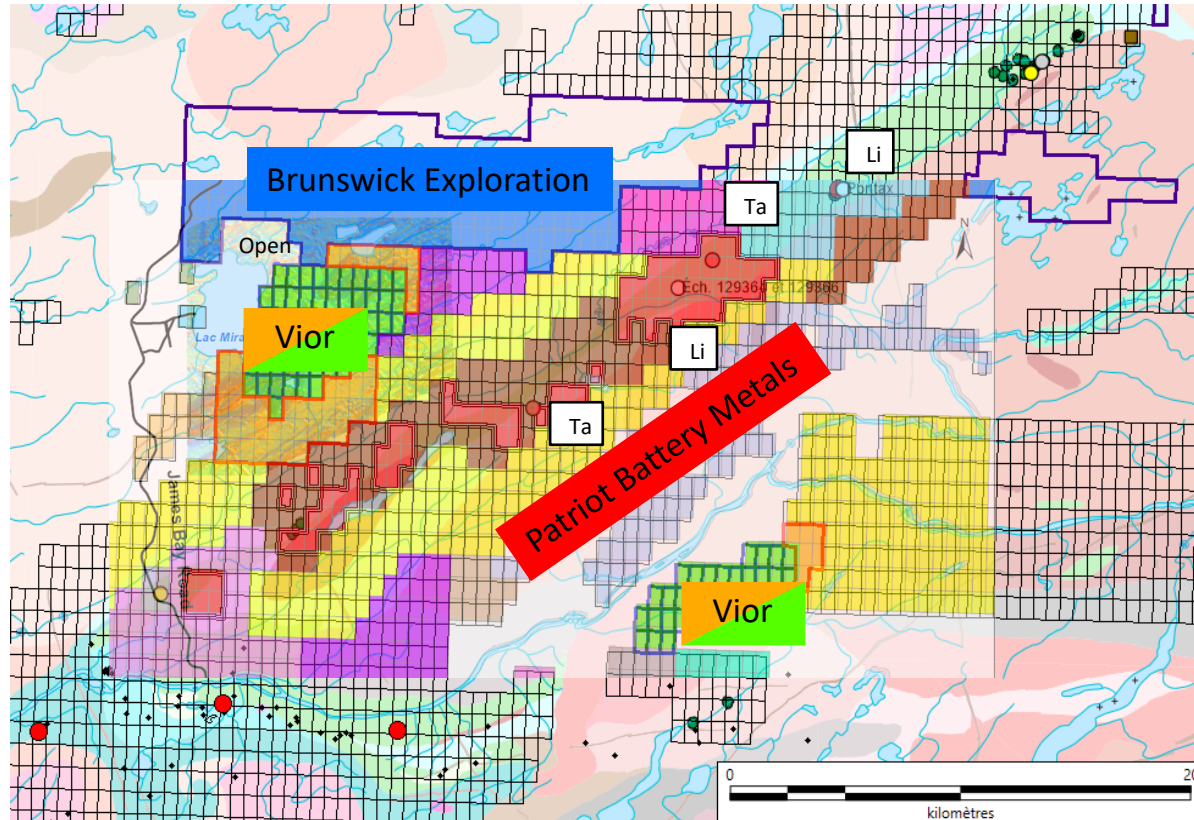
LIGNERIS PROJECT Laflamme Volcanic Corridor



SKYFALL & MOSSEAU Urban-Barry gold Corridor



Lac Mirabelli Area - Lithium potential



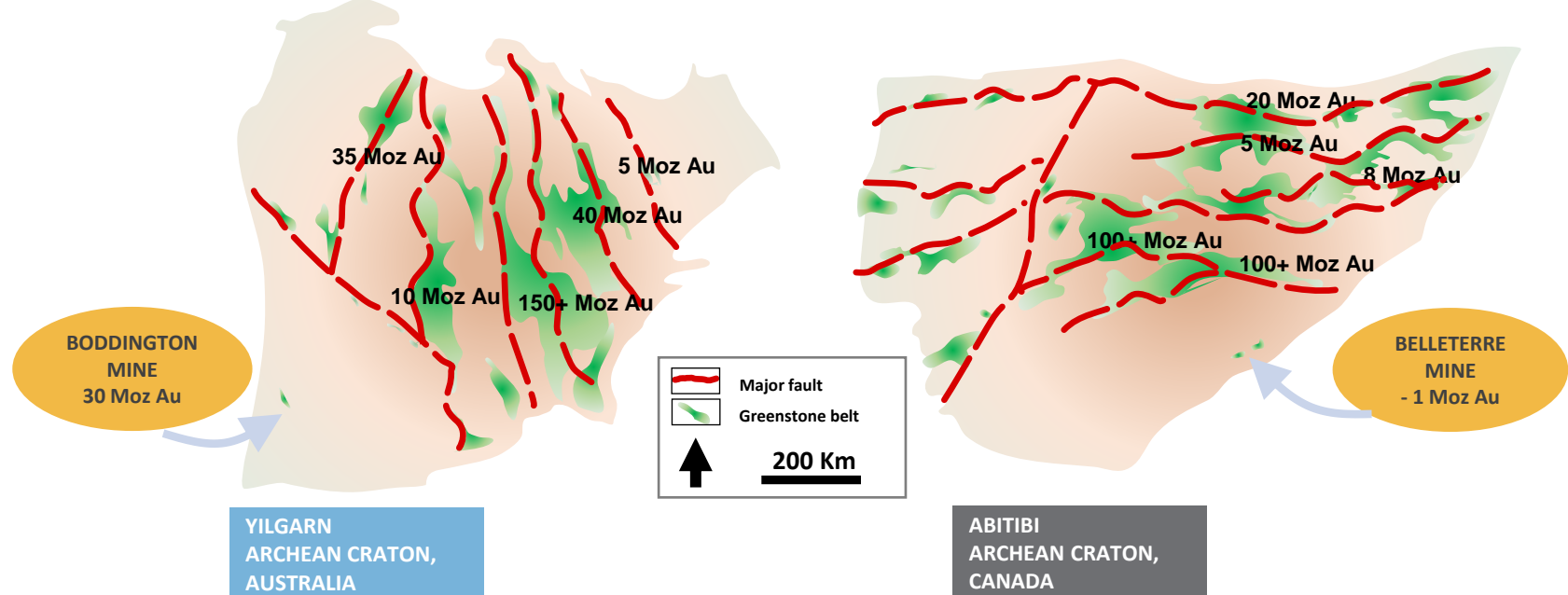
Belleterre Project – Geological Context

WHAT HAPPENS WITH SOME FORGOTTEN AND UNDEREXPLORED GREENSTONE BELTS ?

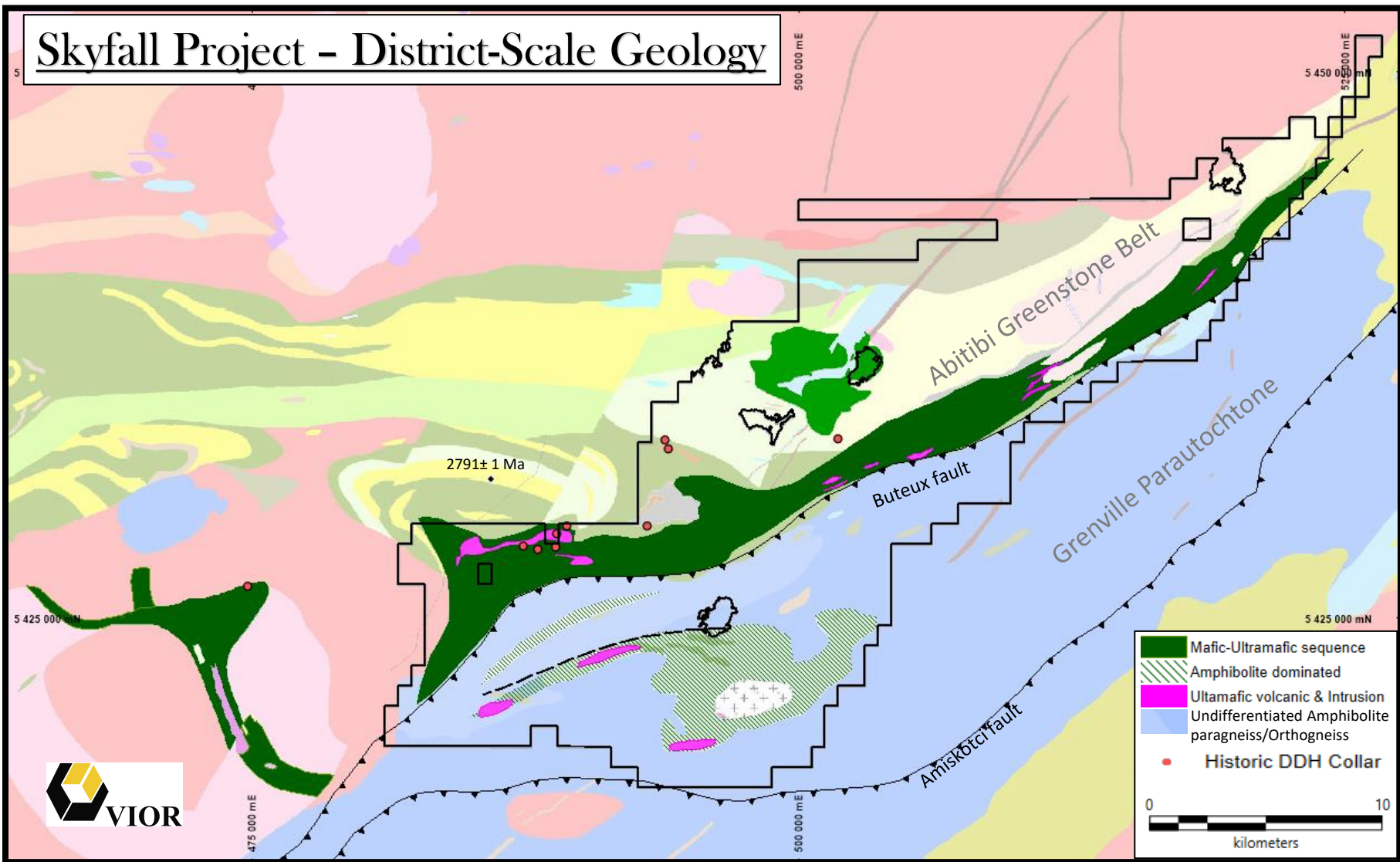


BELLETERRE A UNIQUE LOCATION...

Belleterre is located at the edge of an Archean Craton, outside of a major fault in a small Greenstone Belt just like where the Boddington mine in Australia was discovered in 1979.



Skyfall Project - District-Scale Geology



Belleterre Lithium-South Zoom in on the Pegmatite Swarm (Similar to the Tansim Project)

