

VIOR INC

JUNIOR MINING EXPLORER



TSXV – VIO
OTC – VIORF
FRANKFURT – VL51

Corporate Presentation

October 2022



Because we're a responsible Company, here's the legal

Statements in this document, to the extent not based on historical events, constitute forward-looking statements. Forward-looking statements include, without limitation, statements evaluating market and general economic conditions in the preceding sections, and statements regarding future-oriented costs and expenditures.

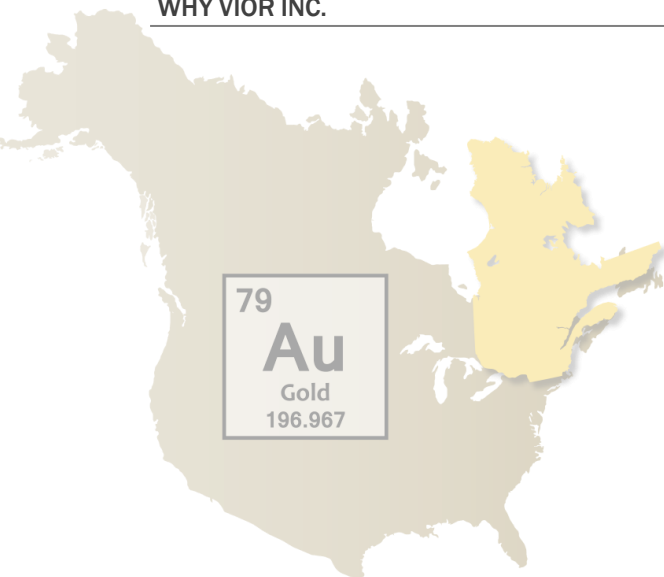
Investors are cautioned not to place undue reliance on these forward-looking statements, which reflect management's analysis only as of the date thereof.

These forward-looking statements are subject to certain risks and uncertainties that could cause actual results to differ materially.

Such risks and uncertainties with respect to the company include the effects of general economic conditions, changing foreign exchange rates and actions by government authorities, uncertainties associated with legal proceedings and negotiations, industry supply levels, competitive pricing pressures and misjudgements in the course of preparing forward-looking statements.

Vior Corporate Profile

WHY VIOR INC.



**VALUE BASED ON
STRONG FUNDAMENTALS**

1. STRATEGY

**Exploration on Multiple
High Potential Gold
Projects**

- Flagship Belleterre Gold project &
- upside on 8 other Promising Gold projects

A Discovery is the Key driver for value creation in an industry known for a low rate of exploration success;

2. SAFE JURISDICTIONS

Precious Metals in Quebec & Nevada

Two of the most attractive mining jurisdictions in the world (Nevada #3 and Quebec #6)*;

3. EXPERTISE

**Highly Committed
Management Team**

Strong Leadership & track record management with a 100+ years experience in the industry and owns a 1%+ equity position;

4. FINANCIAL & TECHNICAL SUPPORT

Strong Project Partners

Osisko Mining, FSTQ, SIDEX, SDBJ, Desjardins, Iluka Resources Ltd., SOQUEM, Ridgeline Minerals Corp.;

5. DIVERSIFICATION

Exploring & Investing

Increased exploration exposure & reduced corporate risk profile via exposure to several potential new discoveries.

*Source: Fraser Institute Survey of Mining Companies 2021 (published in 2022).

Vior Corporate Profile



WHO WE ARE

BOARD OF DIRECTORS

Independent	CLAUDE ST-JACQUES - Chairman
	MARK FEDOSIEWICH - President and CEO
Independent	ÉRIC DESAULNIERS
Independent	CHARLES-OLIVIER TARTE
	LAURENT EUSTACHE

MANAGEMENT

MARK FEDOSIEWICH – President & CEO
LAURENT EUSTACHE – Executive VP
INGRID MARTIN – CFO

TECHNICAL TEAM

CHRISTIAN BLANCHET, P.Geo. - Operations Manager
MATHIEU GUAY, P.Geo. - Geology Manager
BENJAMIN CLELAND, P.Geo. - Senior Exploration Manager
CHAD PETERS, P.Geo. - Technical Advisor
MARC L'HEUREUX, P.Geo. - Technical Advisor
KEN WILLIAMSON, P.Geo. - Structural Geologist Consultant

BY THE NUMBERS

Working Capital*	\$2.40 M
(excludes liability premium on FT shares)	
Investments in Public Cos.*	\$0.996 M
Shares Outstanding*	91,737,363
Market Capitalization	\$11.01 M
	@ \$0.12/share

Major Shareholders

- Osisko Mining ~ 7.8%
(Partially Diluted ~ 11.26%)



- Management ~ 15.5%



- Quebec Institutions ~ 20.0%

- Close Strategic Holders ~ 25.0%

* Approximately as of August 31, 2022
(post financing) :
Investments in Public Cos. RDG & other
Ridgeline Minerals Corp. RDG :
3.642 M @ \$0.265 valued at \$0.965 M

Vior's Asset Allocation & Diversification

EXPOSURE TO MAJOR EXPLORATION PROJECTS IN NORTH AMERICA



VIOR'S PROJECT GENERATION CRITERIA

- 1- Mining Friendly jurisdictions in North America
- 2- Close to an existing mine/or an advanced project
- 3- Good infrastructure and easy accessibility
- 4- Potential to advance quickly

DISCIPLINE & FOCUS

Vior's disciplined capital and human resources allocation process provides for a strong commitment to its flagship Belleterre Gold project

Vior Focus

VIOR CORPORATE & CAPITAL ALLOCATION

BELLETERRE GOLD PROJECT in 2022 - 2023

High Resolution Mag	Completed
2021 Summer Field Exploration	Completed
Initial Phase I&II Drilling (8,055m)	Completed
2022 Summer Field Exploration	Completed
	<i>Results Nov. 2022</i>
Extensive Data compilation	In process
Updated 3D modeling	In process
Substantial new drill targeting	In process

Vior Diversification

SEEKING STRATEGIC PARTNERS

OTHER QUEBEC GOLD PROJECTS

ADVANCED



GREENFIELD

Mosseau
Ligneris

Veza-Noyard

Skyfall

PASSIVE STRATEGY

STRATEGIC INVESTMENT

Ridgeline Minerals Corp. RDG-V

- Quality Projects & Management
- VIOR owns 6.5%* equity interest (3.642 M Shares)

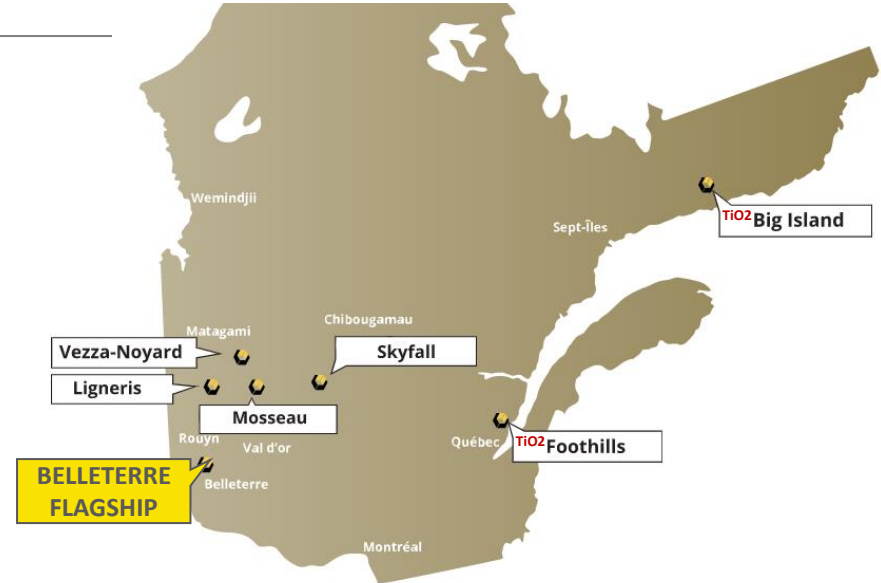
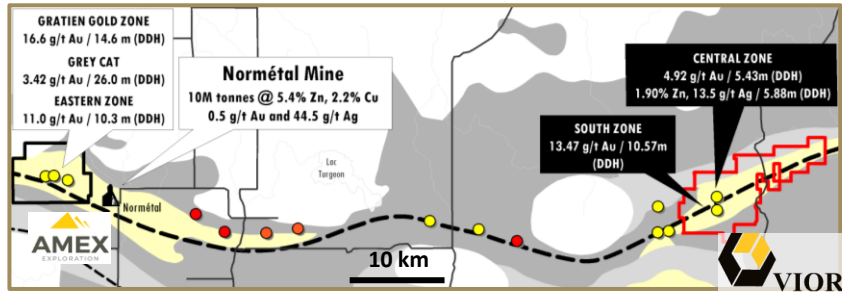
* Approximately as of August 31, 2022

Projects – Overview

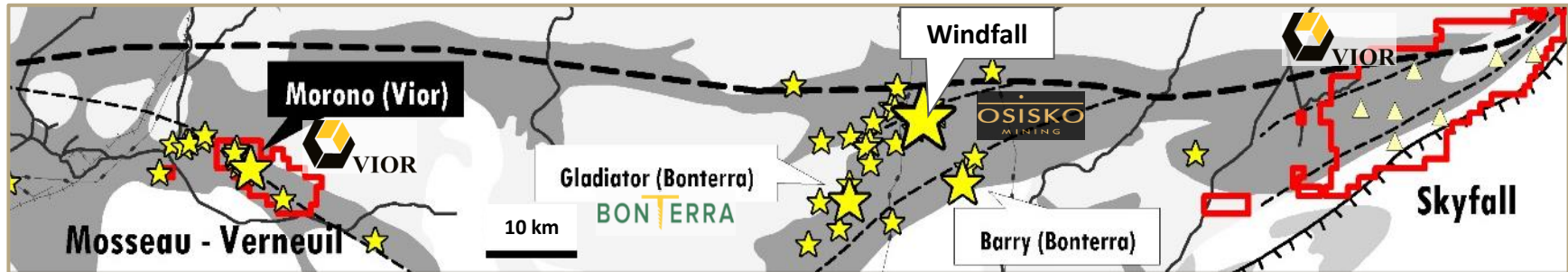


EXPOSURE TO OTHER MAJOR EXPLORATION PROJECTS IN QUEBEC

LIGNERIS PROJECT Laflamme Volcanic Corridor



SKYFALL & MOSSEAU Urban-Barry gold Corridor



Belleterre Gold Project Opportunity

BELLETERRE FLAGSHIP HIGH-GRADE GOLD PROJECT



1. UNIQUE LOCATION

- Quebec - Greenstone Belt
- Heart of Quebec's mining industry
- Access & Infrastructures

2. HIGH-GRADE GOLD POTENTIAL

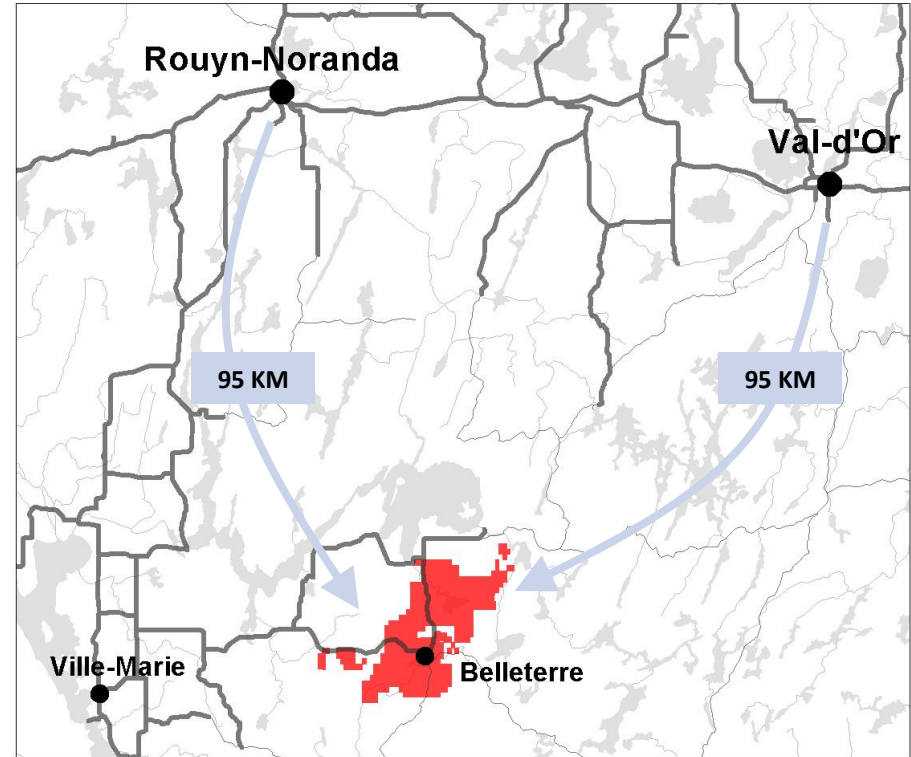
- Proven Mining Belt
- Former past producing Belleterre Gold Mine Over 750Koz Au @ 10.7g/t Au (Sigeom MERN)
- Up to 20 known High-Grade Gold Veins

3. UNIQUE SIZE

- District-Scale – 37 km of Favorable Strike
- 551 claims - 300 Km²
- Over 10 acquisition and Option/JV agreements

4. UNIQUE OPPORTUNITY

- Multi-deposit potential
- Shallow drilling only
- Has never been:
 - Consolidated
 - Explored using modern Techniques



Belleterre Growth Opportunity

BELLETERRE FLAGSHIP HIGH-GRADE GOLD PROJECT

1. HIGH POTENTIAL GOLD PROJECT

Using a systematic exploration process in the never before consolidated & past producing high grade Belleterre mining camp.

2. LOWER RISK EXPLORATION OPPORTUNITY

Flagship Belleterre gold project is the excellent result and example of Vior's project generation criteria.

3. PROVEN VALUE CREATION STRATEGY

M&A ACTIVITIES

- Osisko (Cdn. Malartic mine)
- Detour Gold (Detour mine)
- Integra (Lamaque mine)

Belleterre Project – Overview



STRATEGIC DISTRICT-SCALE GOLD PROJECT

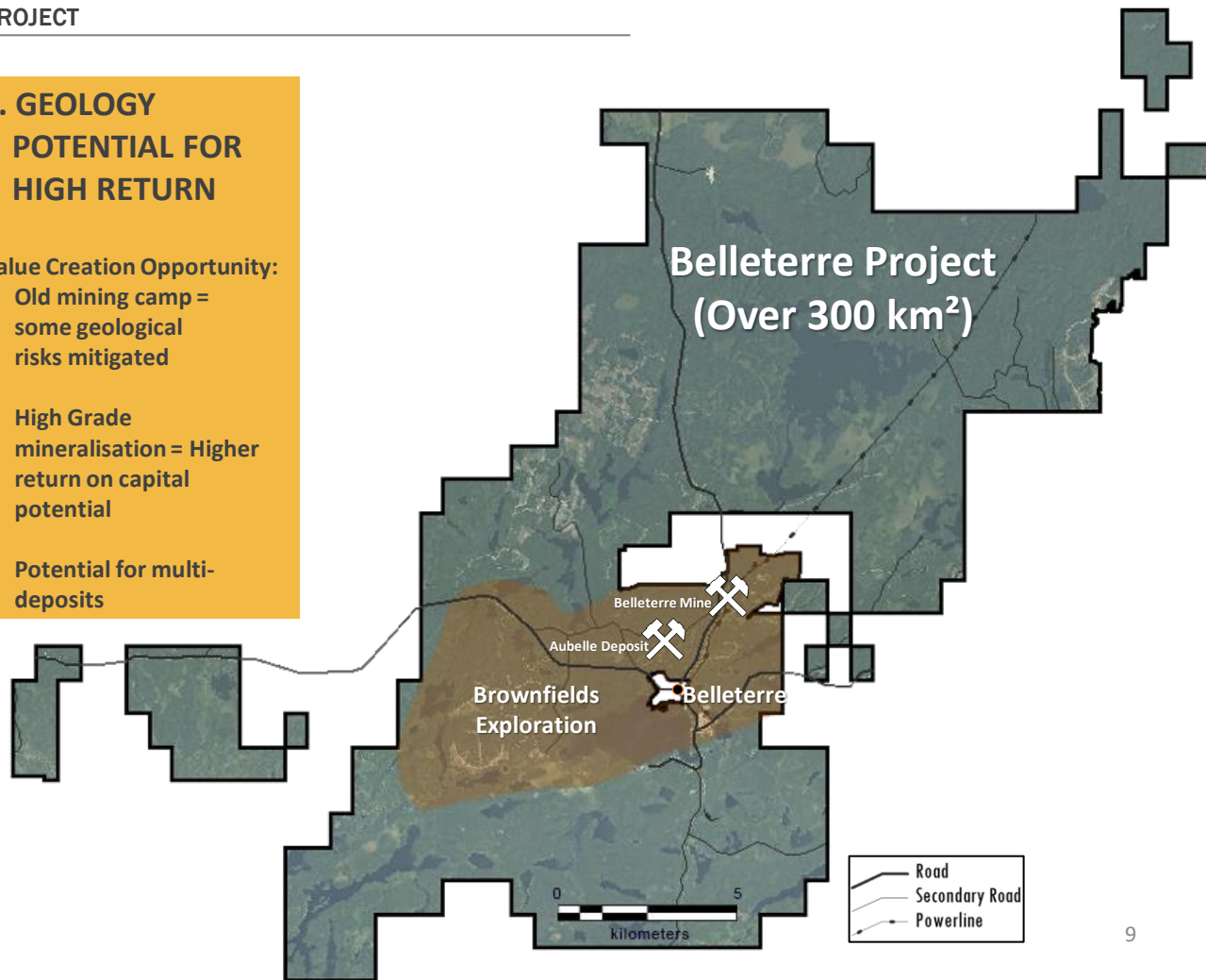
1. LOCATION COMPETITIVE ADVANTAGES

- Lower cost of Exploration: all-in drilling costs 2021-2022 of \$170/metre CAD
- Lower threshold for economic potential and opportunity
- Year round easy access and excellent infrastructure nearby

2. GEOLOGY POTENTIAL FOR HIGH RETURN

Value Creation Opportunity:

- Old mining camp = some geological risks mitigated
- High Grade mineralisation = Higher return on capital potential
- Potential for multi-deposits



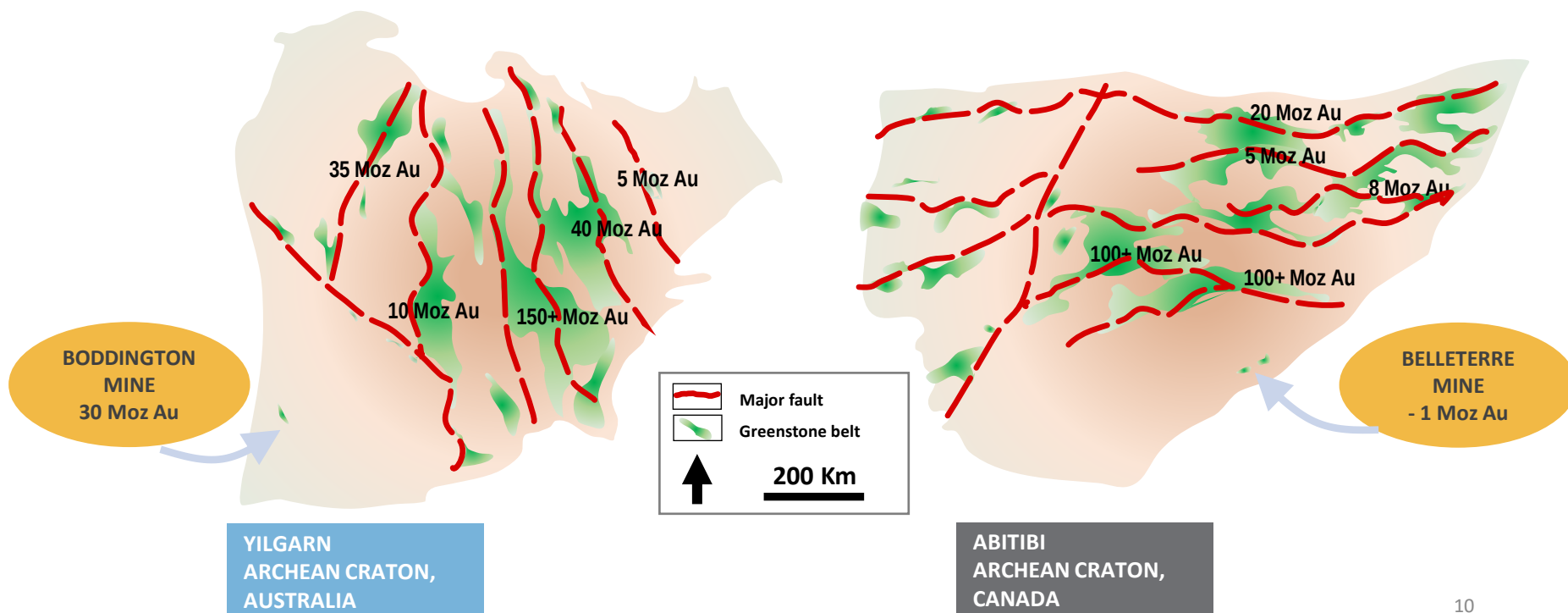
Belleterre Project – Geological Context



BELLETERRE - A FORGOTTEN AND UNDEREXPLORED GREENSTONE BELT ?

BELLETERRE A UNIQUE LOCATION

Belleterre is located at the edge of an Archean Craton, outside of a major fault in a small greenstone belt just like the Boddington mine discovered in 1979 in Australia.





Bellettre Project - Brownfield Area

VIOR CONFIRMS HIGH GRADE GOLD RESULTS AT SURFACE (2021 BEST VALUES)



Sample 656221

Blasted boulder from Conway showing
274.9 g/t Au



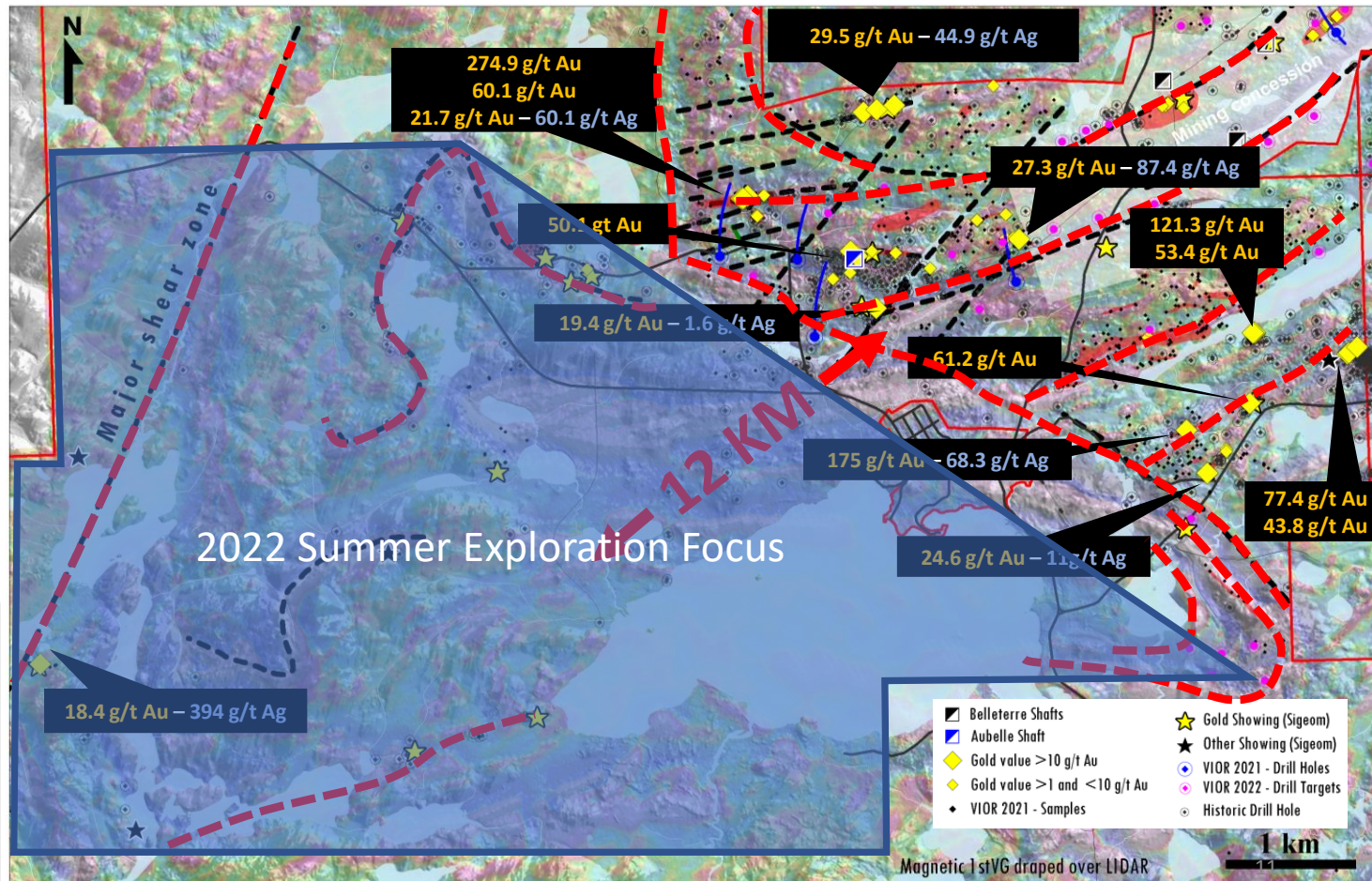
Sample 656213

Jolette-Nord showing
121.3 g/t Au



Sample 656233

Aubelle-1 showing - QFP
50.1 g/t Au



Belleterre Project – District-Scale Exploration

DATA COMPILATION AND SYSTEMATIC EXPLORATION



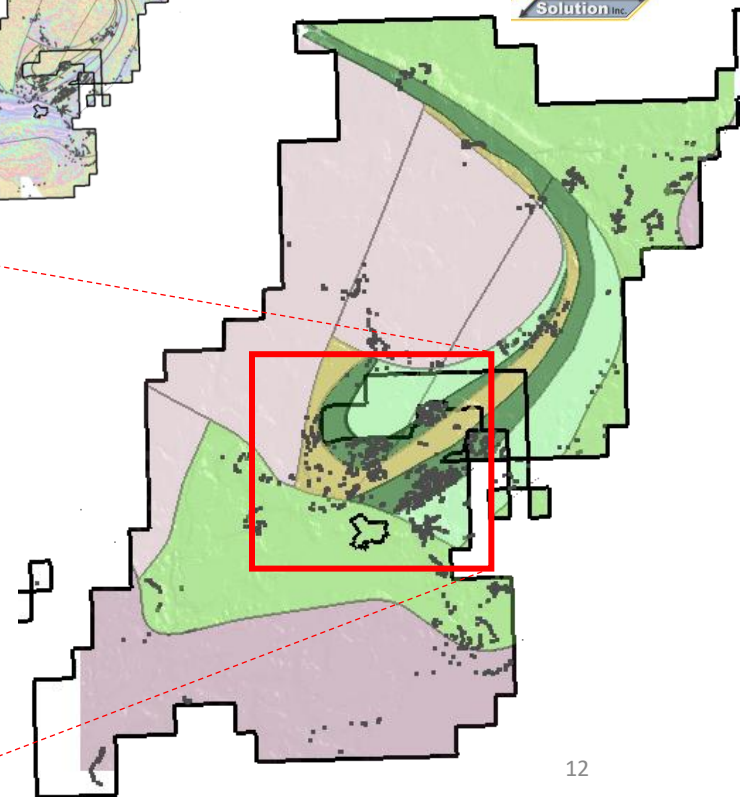
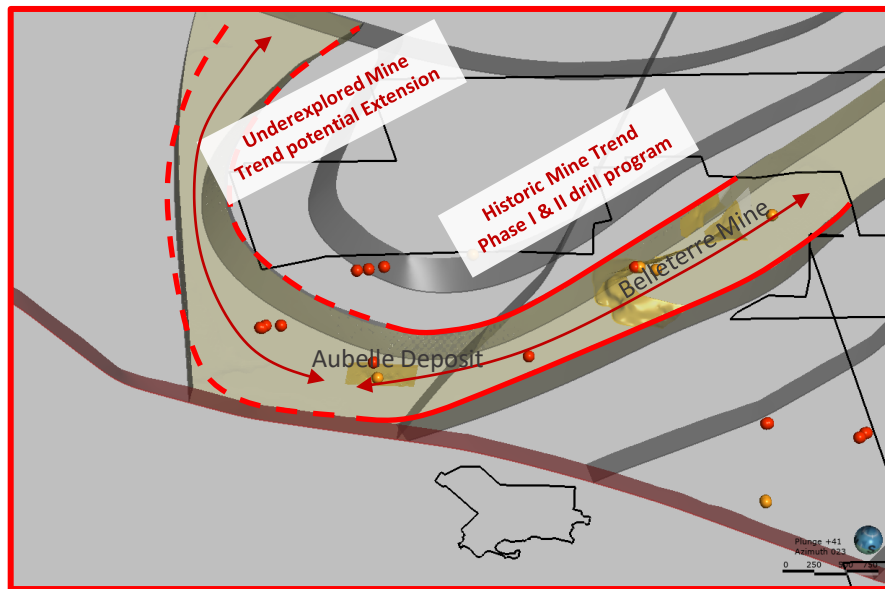
Jan. 2021
Belleterre
Consolidation

June 2021
High resolution
Mag survey

Sept. 2021
2021 prospecting
(1,323 samples)

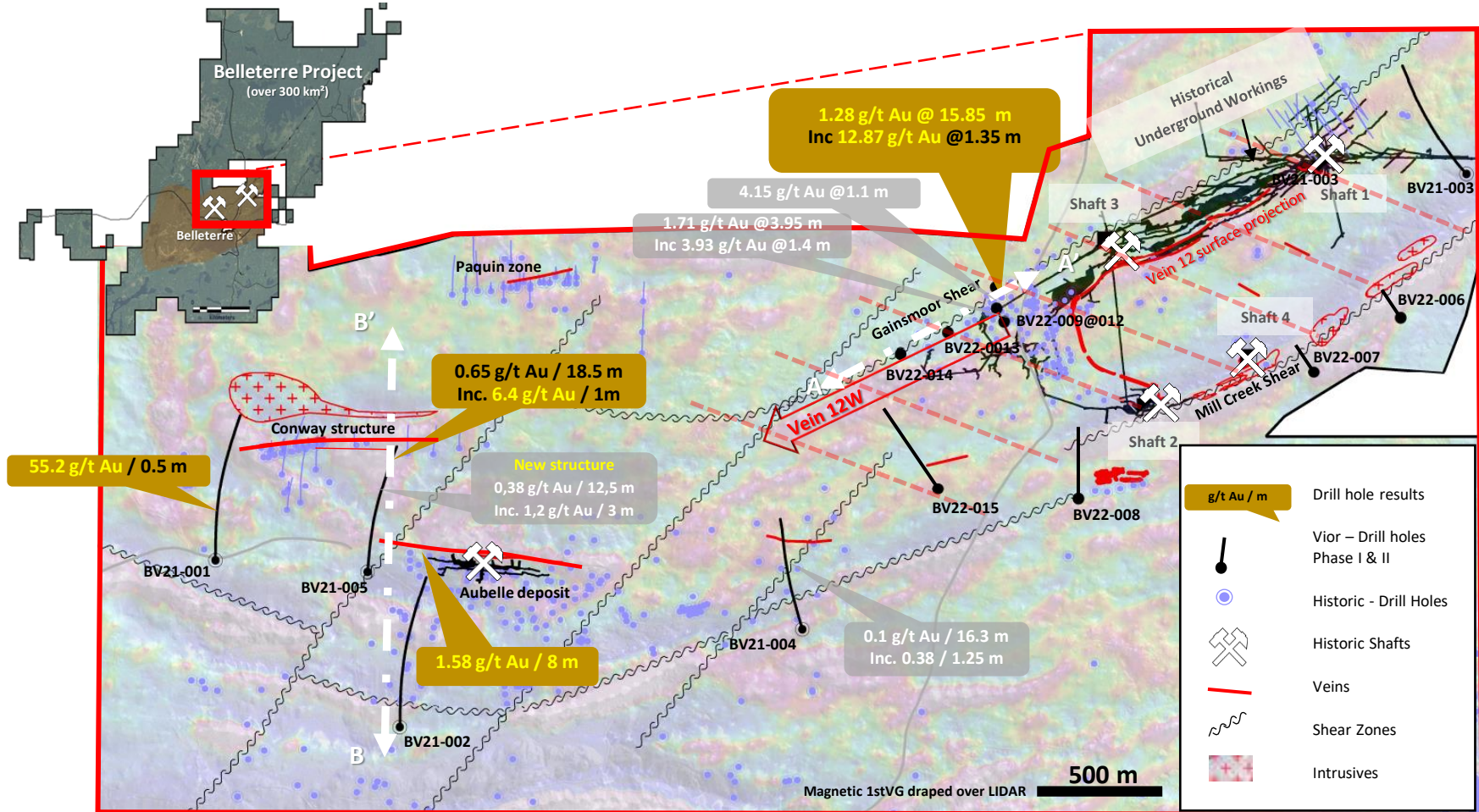
Nov. 2021
Structural interpretation
& compilation

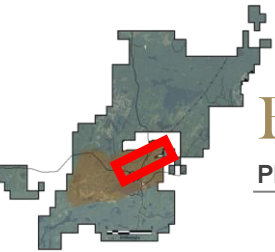
Nov. 2021
Geological
Interpretation - Phase I



Belleterre Project – Historic Mine Trend

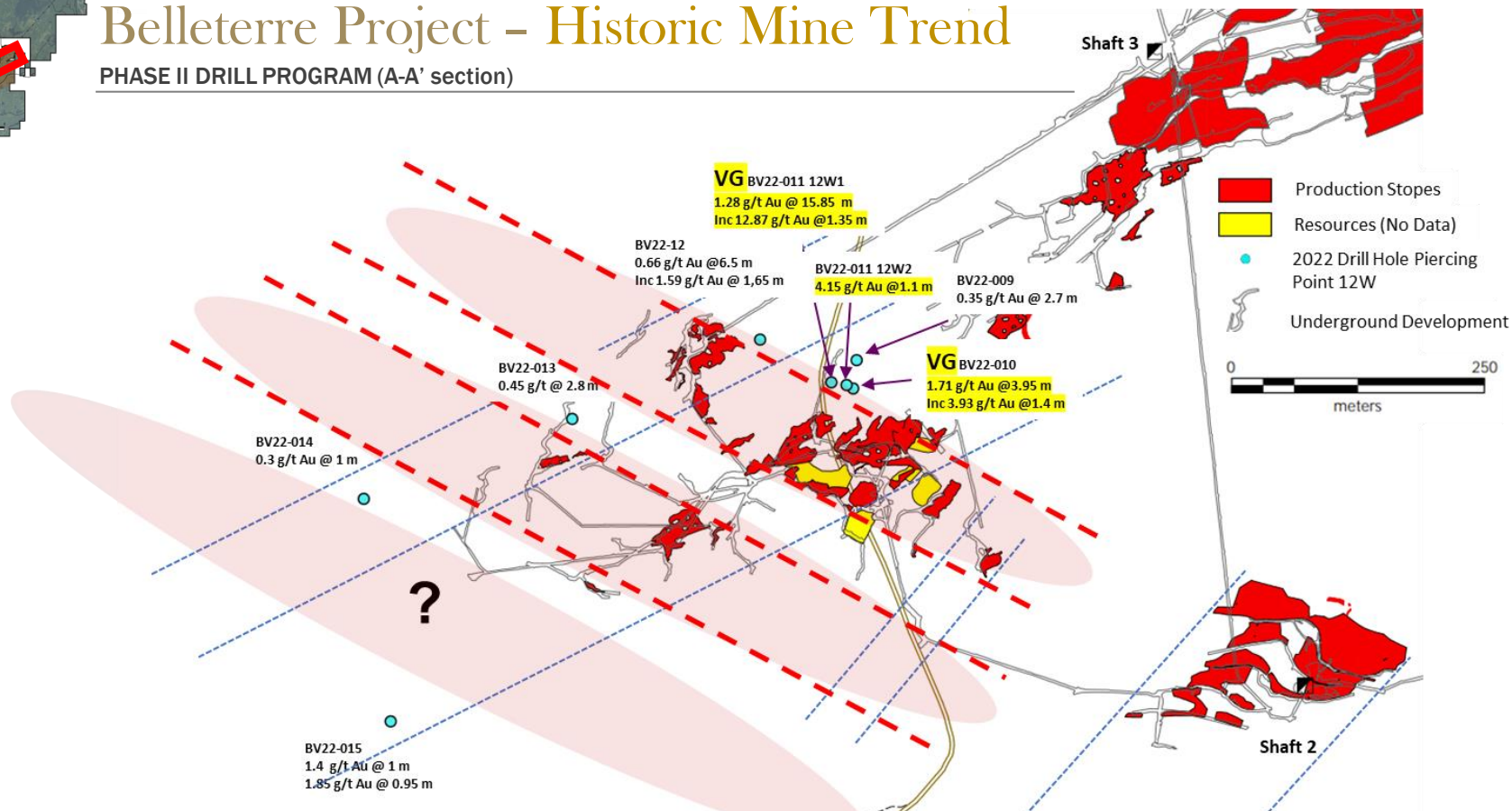
PHASE I & II DRILL PROGRAM RESULTS (2021 - 2022)





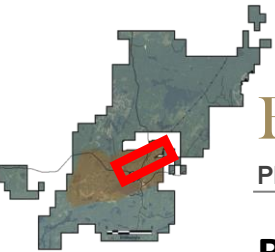
Belleterre Project – Historic Mine Trend

PHASE II DRILL PROGRAM (A-A' section)



2022 Drilling on the 12W structure confirms :

- A strong deformation zone (15-25m width) oriented 30° SW (Mine Trend continuity)
- Quartz Vein system of between 1m to 13m width including trace PY and PO
- High grade gold is distributed along the NW- SE shoots - including VG



Belleterre Project – Historic Mine Trend

PHASE I & II DRILL PROGRAM : RESULTS

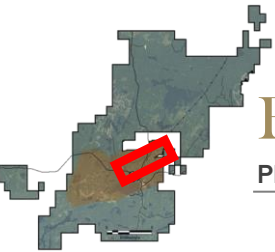


BV22-011 & 13 : Belleterre – 12W Mineralisation



Mineralization along strike unveils quartz veining associated with locally VG.

Deformation is intense and gold is mainly concentrated at the footwall and hanging wall of the 12W deformation zone.

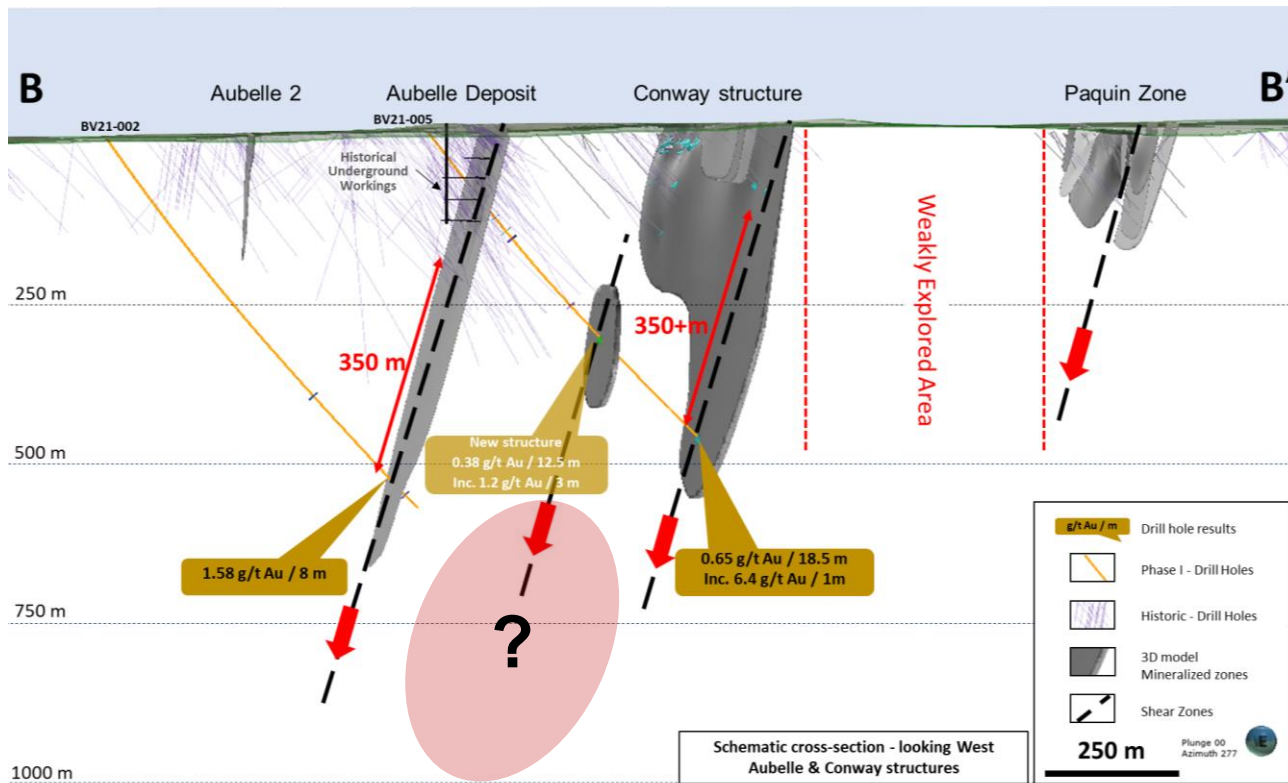


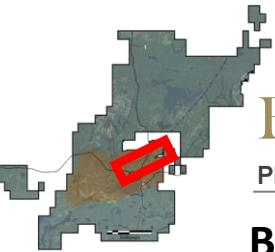
Belleterre Project – Historic Mine Trend

PHASE I DRILL PROGRAM (B-B' section)



Phase I drill program results demonstrated wider mineralized intercepts, suggesting gold-bearing structures are thickening at depth. It represents an important step towards de-risking the project and demonstrates the strong exploration potential.





Belleterre Project – Historic Mine Trend

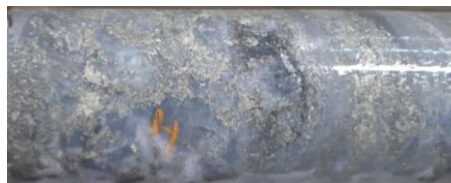
PHASE I & II DRILL PROGRAM : RESULTS



BV21-002 : Aubelle - Mineralisation & Gold distribution

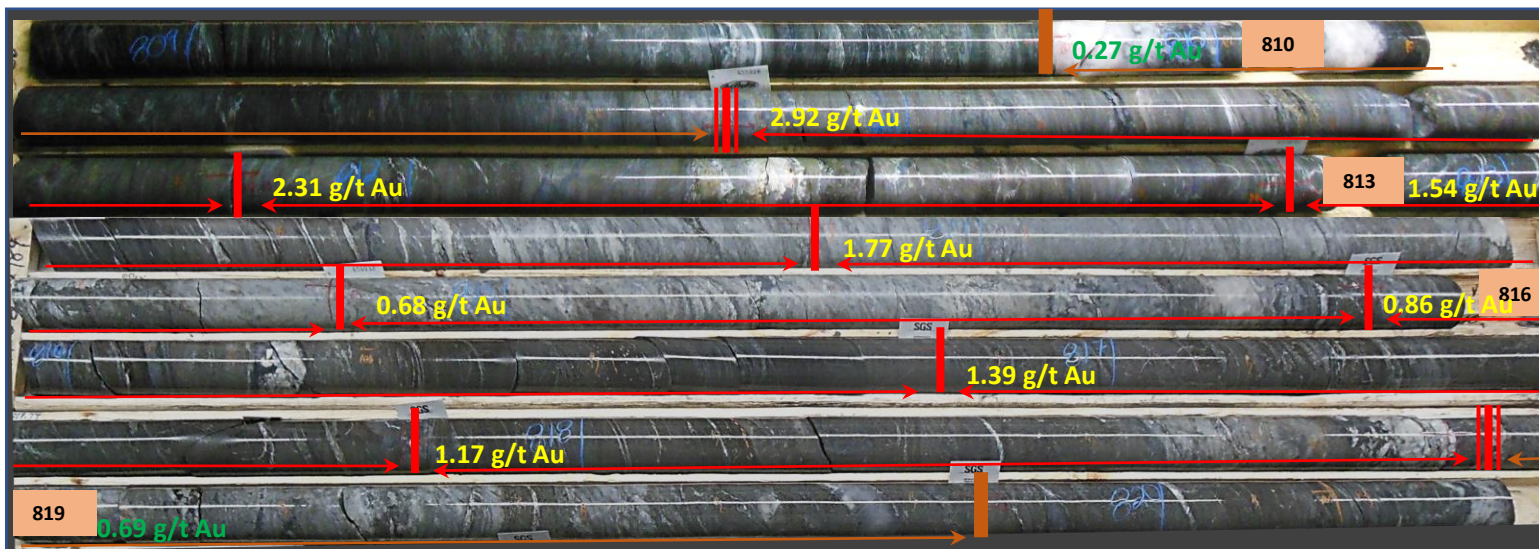
From	To	Length	Au g/t
809.83	810.83	1.0	0.269
810.83	811.83	1.0	2.916
811.83	812.83	1.0	2.313
812.83	813.83	1.0	1.54
813.83	814.83	1.0	1.774
814.83	815.83	1.0	0.683
815.83	816.83	1.0	0.858
816.83	817.83	1.0	1.393
817.83	818.83	1.0	1.167
818.83	819.83	1.0	0.687
819.83	820.83	1.0	0.375

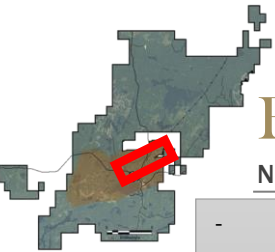
1.58 g/t Au / 8 m



Mineralization at depth unveils quartz flooding associated with PY & PO, and looks like a classic Archean Lode gold zone.

Deformation is highly pervasive with gold being well distributed over the entire intersection.



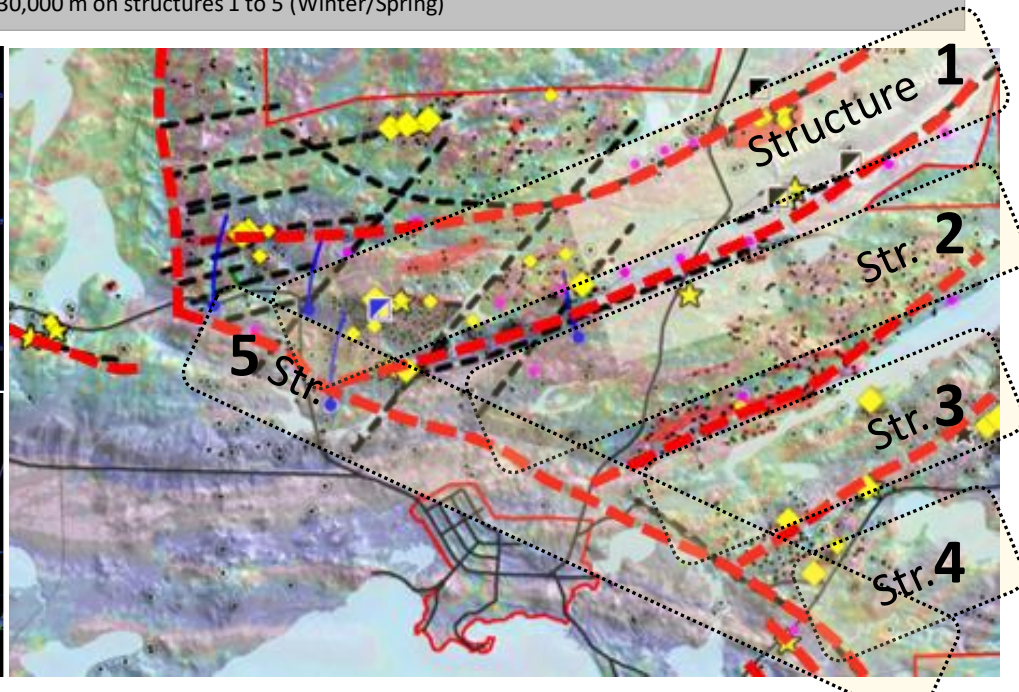
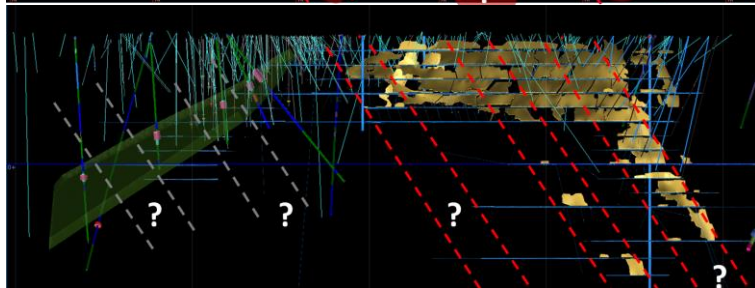
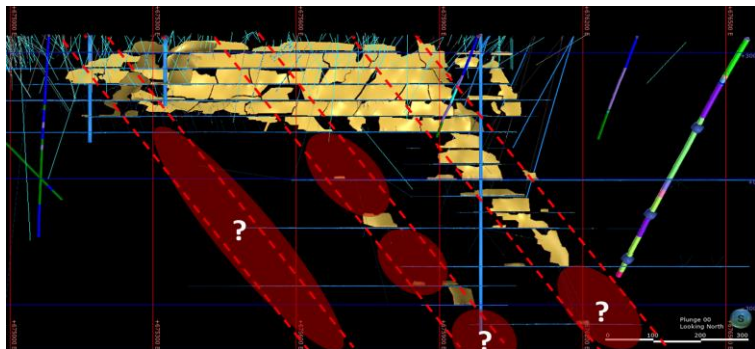


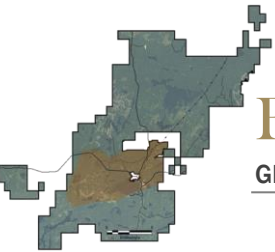
Belleterre Project – Drilling strategy



NEXT STEPS AT BELLETERRE 2022 - 2023

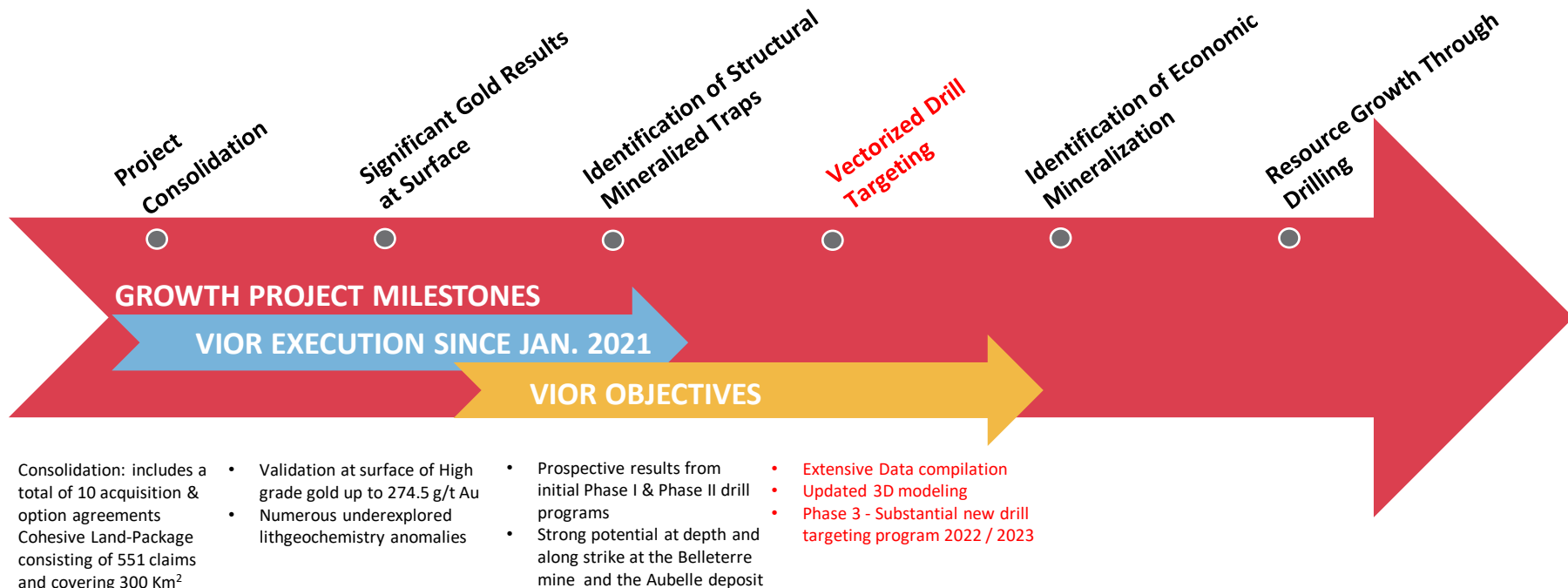
- Positive high-grade surface results on structures 1, 2, 3 & 4 see map below (Summer 2021 field program)
- 8 055m drilling initiated along the Historic Mine Trend (Structure 1 / Winter 2021-2022 drill program) confirms :
 - strong and wide structural deformation zones
 - gold continuity at depth over a large step out
 - identification of secondary structures that are controlling the high grade gold distribution
 - these important results will help refine the structural model for target generation on structures 1, 2, 3 & 4
- Exploration strategy - Summer to Winter 2022-2023:
 - 2 months field program (Summer)
 - Database compilation & detailed structural modelling (Fall/Winter)
 - Design High priority drill program of 20,000 to 30,000 m on structures 1 to 5 (Winter/Spring)





Belleterre Project – Systematic Strategy

GROWTH OPPORTUNITY & POTENTIAL



The Vior Investment Opportunity

1. SOLID FOUNDATION

- ✓ Low-cost Corporate Structure - Large Insider share ownership !!
- ✓ Exposure to 9 promising Precious Metals Projects – All in Safe Jurisdictions
- ✓ Significant new Discovery Potential

2. SOLID PROVEN STRATEGY

- ✓ Belleterre Project potential & Corporate Execution
- ✓ Osisko Mining Inc's Endorsement



3. CONTINUOUS NEWS FLOW

- ✓ Belleterre - Rapidly developing High-Grade Gold project
 - Surface High-Grade rock samples up to **274.9 g/t Au**
 - Completed **3,858 m** drilling Phase I - Aubelle area : *including wide mineralized intercepts*
 - Completed **4,197 m** drilling Phase II - Belleterre : *quartz veining associated with VG*
- ✓ Skyfall - Greenfield gold & nickel Potential located next to world class gold deposits
- ✓ Mosseau / Ligneris - Intermediate gold projects with excellent Potential
- ✓ Ridgeline Investment – Excellent exploration potential from 4 Gold & Silver Projects in Nevada and 1 Gold Project in Idaho

Belleterre Project - Gold

2021-2022 FIELD ACTIVITIES & INSTALLATIONS





TSXV – VIO
OTC – VIOF
FRANKFURT – VL51



CONTACT

Mark Fedosiewich
mfedosiewich@vior.ca
+1 613 898 5052

vior.ca