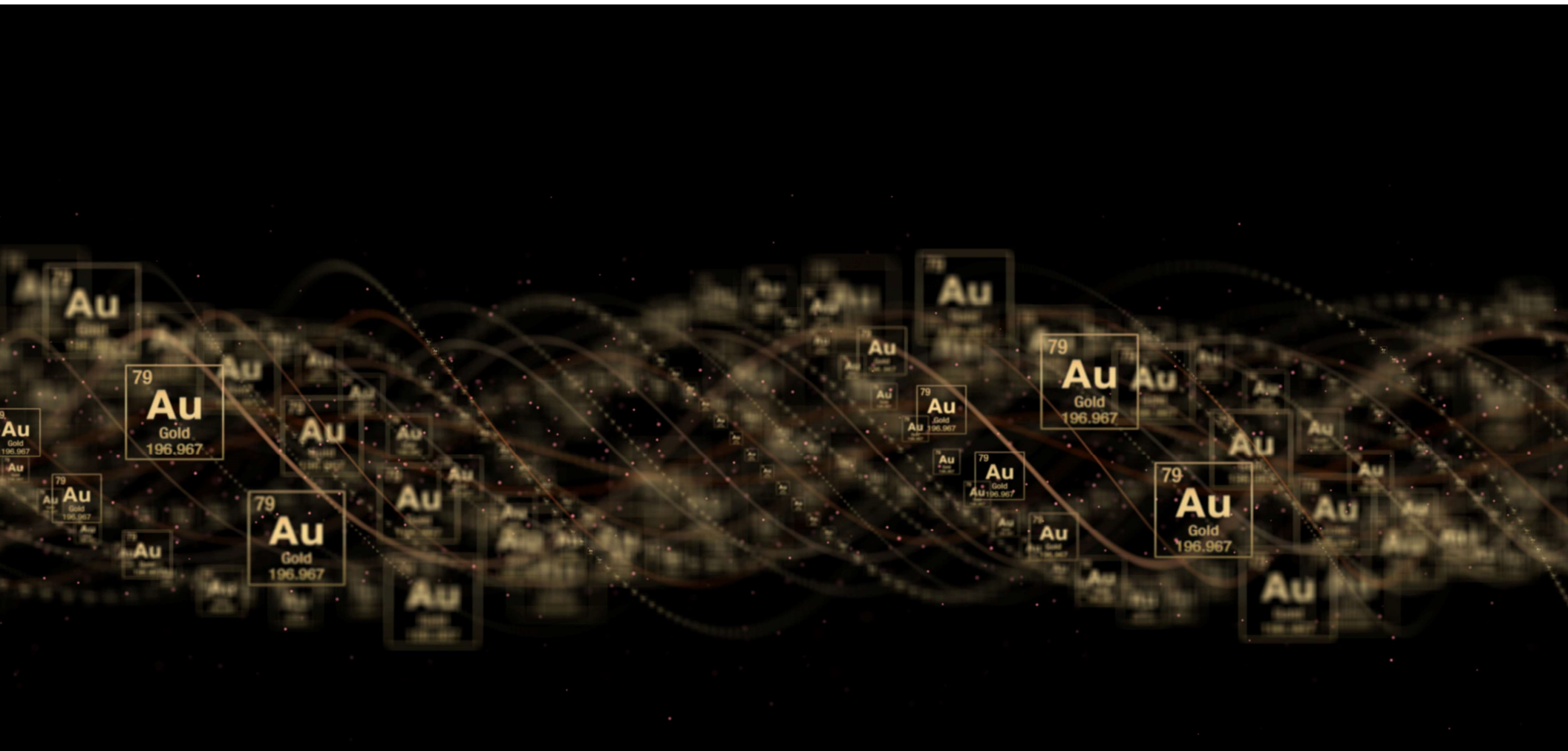


VIOR INC JUNIOR MINING EXPLORER



Corporate presentation

JANUARY 2022



Because we're responsible Company, here's the legal

Statements in this document, to the extent not based on historical events, constitute forward-looking statements. Forward-looking statements include, without limitation, statements evaluating market and general economic conditions in the preceding sections, and statements regarding future-oriented costs and expenditures.

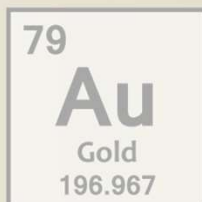
Investors are cautioned not to place undue reliance on these forward-looking statements, which reflect management's analysis only as of the date thereof.

These forward-looking statements are subject to certain risks and uncertainties that could cause actual results to differ materially.

Such risks and uncertainties with respect to the company include the effects of general economic conditions, changing foreign exchange rates and actions by government authorities, uncertainties associated with legal proceedings and negotiations, industry supply levels, competitive pricing pressures and misjudgements in the course of preparing forward-looking statements.

Vior Corporate Profile

WHO WE ARE



Company Value Proposition

1- Exposure to Multiple Potential Discoveries : Belleterre & 8 other Gold projects

Key driver for value creation in an industry known for a low rate of exploration success,

2- Precious Metals in North America : Quebec & Nevada

Two of the most attractive mining jurisdictions in the world (Nevada #1 and Quebec #6)*,

3- Highly Committed Management : Strong Leadership & Track Record

Management with a 100+ years experience in the industry and owns a 16%+ equity position,

4- Strong Project Partners : Financial & Technical

Osisko Mining, FTQ, SIDEX, SDBJ, Iluka Resources Ltd., SOQUEM, Ridgeline Minerals Corp.,

5- Hybrid Strategy : Exploring & Investing

Increasing exposure & diversifying corporate risk profile to potential new discoveries.

**Source: Fraser Institute Survey of Mining Companies 2020 (published in 2021).*

Vior Corporate Profile

WHO WE ARE



Board of Directors

Independent



CLAUDE ST-JACQUES - Chairman (Québec, Qc.)
Founder of Vior, Mazarin and Virginia Gold Mines
Former General Director of the Prospector Association of Quebec
Extensive business network in the mining and resource sector



MARK FEDOSIEWICH - President and CEO (Ottawa, Ont.)
Former First Vice President of CIBC Wood Gundy Inc.
Over 30 years experience in the investment and junior mining sector
Extensive business network in the mining and resource sector

Independent



ÉRIC DESAULNIERS - Director (Gatineau, Qc.)
Founder and CEO of Nouveau Monde Graphite Inc.
Professional geologist specialized in geophysics
Former Infantry Officer in the Canadian Forces

Independent



CHARLES-OLIVIER TARTE - Director (Prévost, Qc.)
CFO of Nouveau Monde Graphite Inc.
Chartered Professional & Certified Management Accountant
Former controller for Imerys Graphite & Carbon Qc



LAURENT EUSTACHE - Director (Montreal, Qc.)
Executive Vice-President Vior Inc.
Professional geologist specialized in economic geology
Former Portfolio Manager SIDEX

Management & Technical Team

MARK FEDOSIEWICH – President & CEO

LAURENT EUSTACHE – Executive VP

INGRID MARTIN – CFO

CHRISTIAN BLANCHET - Operations Manager

MATHIEU GUAY - Geology Manager

MARC L'HEUREUX - Technical Advisor

KEN WILLIAMSON – Structural Geologist Consultant



Vior Corporate Profile

WHO WE ARE



Vior Strategy & Partners

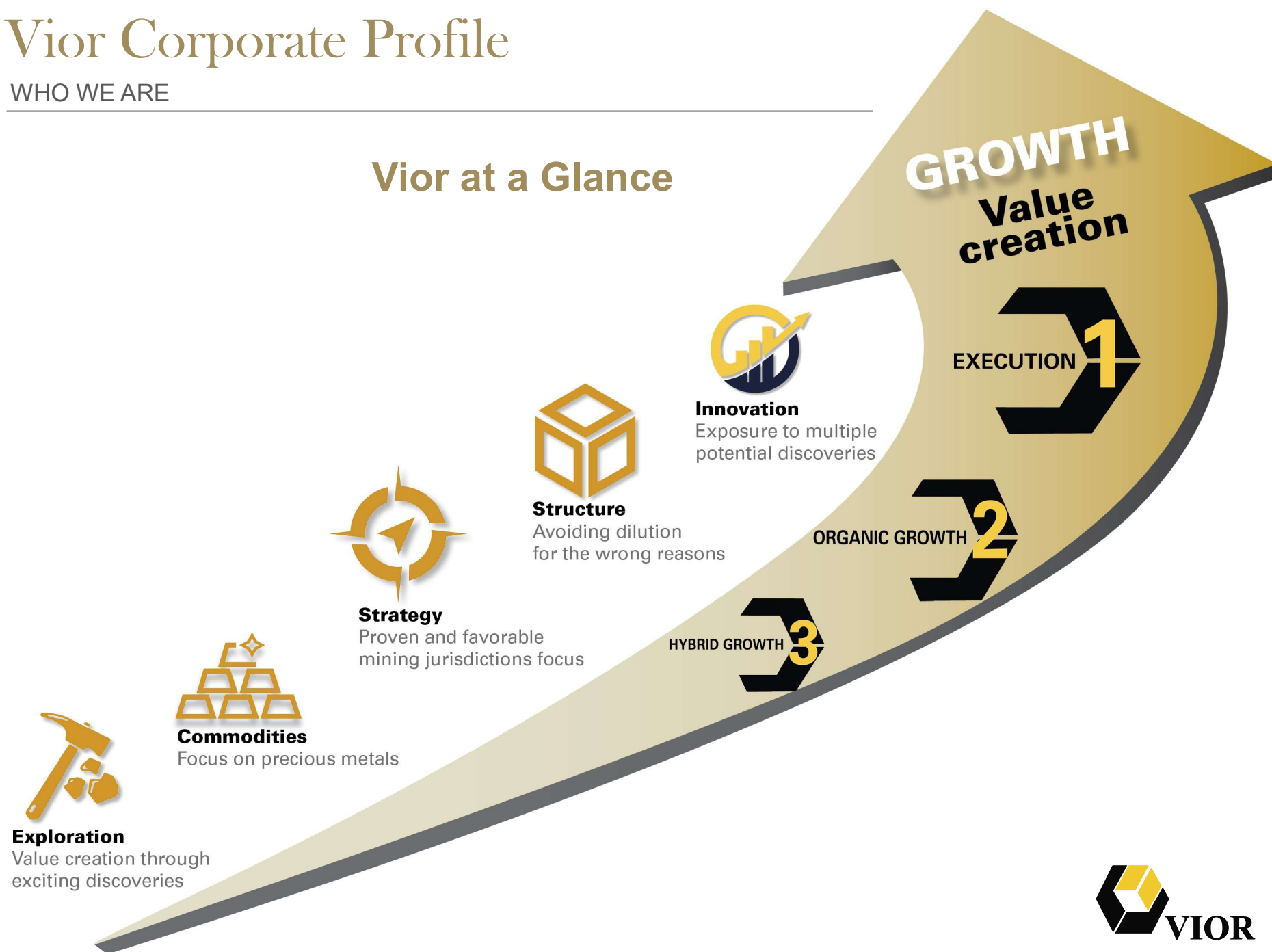


*As of Sept. 30, 2021

Vior Corporate Profile

WHO WE ARE

Vior at a Glance



Corporate Structure

BY THE NUMBERS

Working Capital*	\$1.958 M
Flow Through Financing	\$1.492 M (completed October 21, 2021)
Flow Through Financing	\$ 0.800 M (completed December 23, 2021)
Investments in Public Cos.*	\$1.714 M

Shares Outstanding**

78,271,895

* As of Sept. 30, 2021

Investments in Public Cos. RDG & ECC :
Ridgeline Minerals Corp. RDG :
3.642 M @ \$0.43 valued at \$1.566 M

** As of Oct. 2021

Major Shareholders

- Osisko Mining ~ 6.7%



- Management ~ 16.0%

- Quebec Institutions ~ 16.0%



- Close Strategic Holders ~ 30.0%

Warrants*

1,500,000 @ \$0.12 (Expiring Dec. 8, 2022)

6,375,000 @ \$0.15 (Expiring July 23, 2022)

6,000,000 @ \$0.30 (Expiring March 22 & March 30, 2023)

1,000,000 @ \$0.30 (Expiring June 14, 2024)

Options*

4,979,000 @ \$0.10 - \$0.22

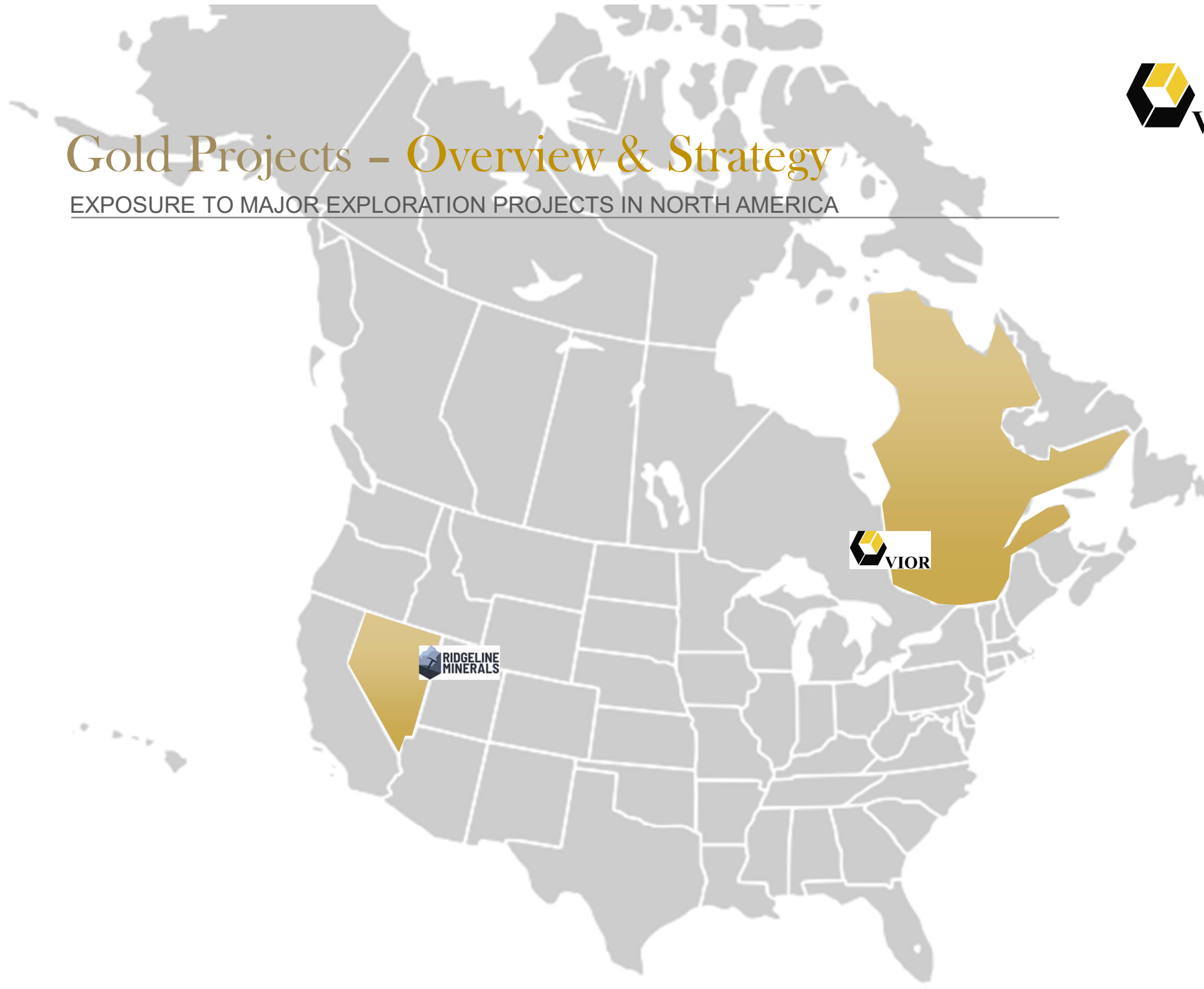
Market Capitalization

\$16.44M @ \$0.21/share



Gold Projects – Overview & Strategy

EXPOSURE TO MAJOR EXPLORATION PROJECTS IN NORTH AMERICA



Gold Projects – Overview & Strategy

EXPOSURE TO MAJOR EXPLORATION PROJECTS IN NORTH AMERICA

Vior Hybrid Strategy



VALUE PROPOSITION

Exposure to High Quality Precious Metals Exploration Projects in North America.

DIFFERENTIATION

Vior's Hybrid Strategy is Unique - Exploring & Investing !

ADVANTAGE

Project risk-sharing is Preferred, which looks to create Shareholder Value and diversify Vior's overall Corporate Risk Profile.

Ridgeline Minerals - Overview



EXPOSURE TO FOUR HIGHLY PROMISING GOLD PROJECTS IN NEVADA

6.5%

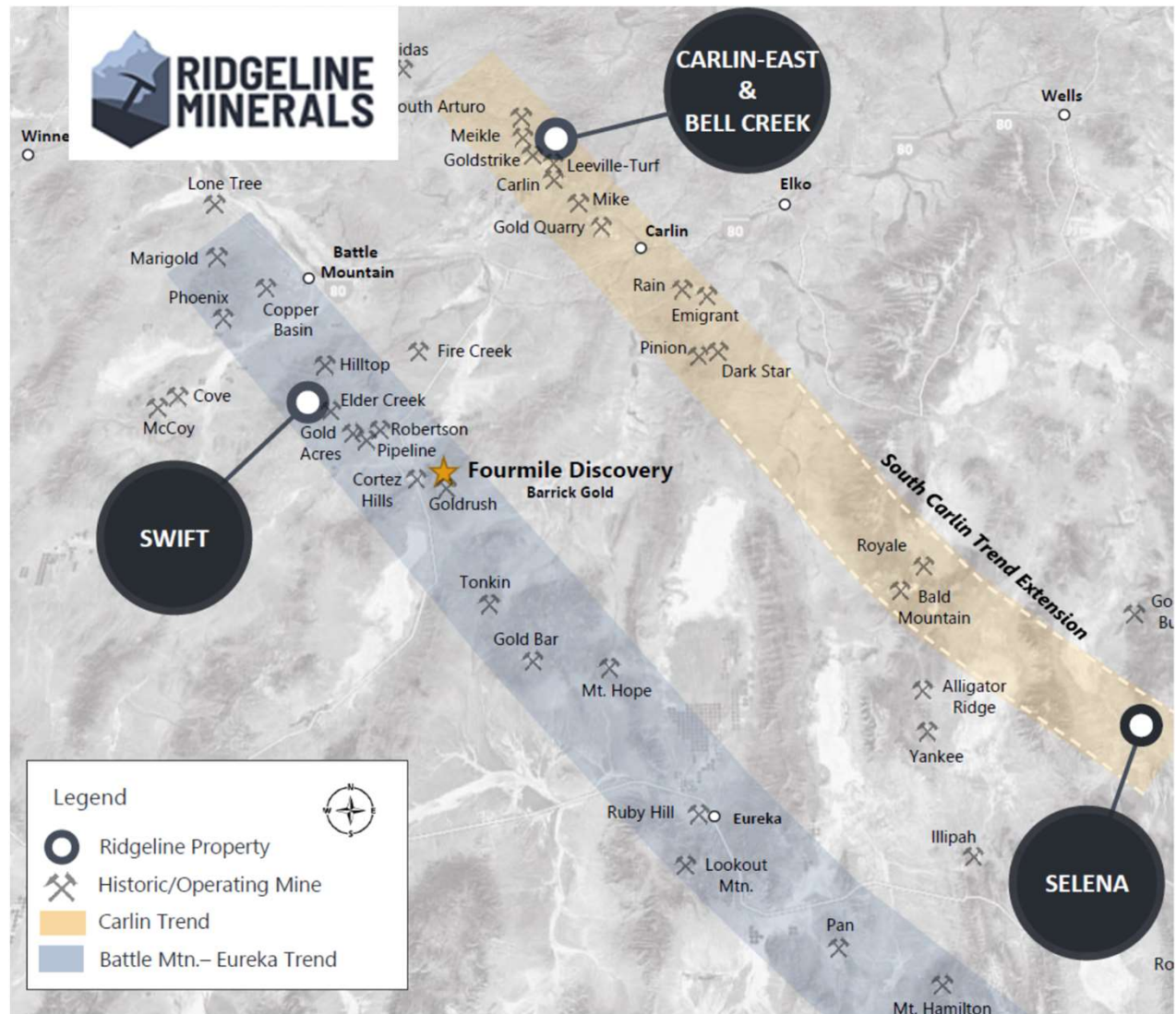
Vior 6.5% equity interest
(3,642,500 shares)

100%

100% ownership of four projects in the Carlin
and Battle Mtn. Eureka Trends

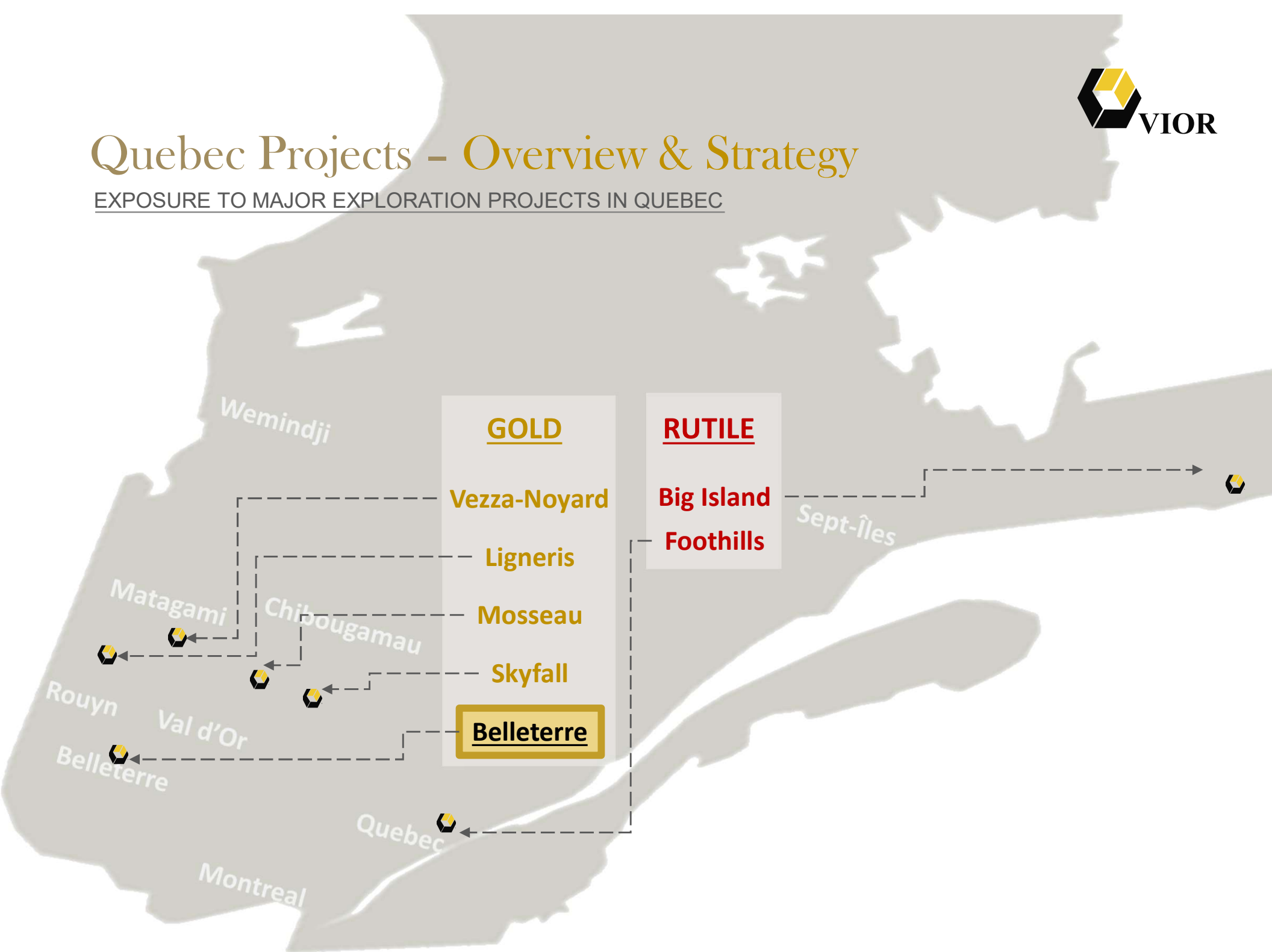
150+ KM²

Land package - Exploring for “Tier 1”,
Carlin-Type gold deposits in Nevada



Quebec Projects – Overview & Strategy

EXPOSURE TO MAJOR EXPLORATION PROJECTS IN QUEBEC



Quebec Gold Projects – Overview & Strategy

EXPOSURE TO MAJOR EXPLORATION PROJECTS IN QUEBEC

Project Generation Criteria:

- 1- Mining Friendly jurisdictions in North America
- 2- Close to an existing /or advanced mine project
- 3- Good infrastructure and easy accessibility
- 4- Potential to advance quickly

Quebec Project	Mining camp		Access & Infrastructures	Size	Exploration Stage	Deposit Type	VIOR Best result	Catalyst
Belleterre	Belleterre Mine Aubelle deposit	Belleterre Mine 750K oz @ 10.7 gtAu	Road access 12 months/year 95 km south of Rouyn-Noranda	District-Scale 291.3 km ²	Brownfield	High-grade Gold Mineralisation	Past production High grade at surface	Potential Drilling success
Skyfall	Urban-Barry corridor Geological continuity Winfall, Barry, Gladiator	World-Class High-grade Gold deposits 8+ Moz Au discovered	Road access 12 months/year Near Lebel-sur-Quevillon	District-Scale 270.4 km ²	Greenfield	High-grade Gold Mineralisation	7 till sample gold clusters	Potential Prospection success
Ligneris	Laflamme corridor Nord Metal Mine AMEX Exploration	Nord Metal Mine 10 Mt @ 5.4% Zn, 2.2% Cu, 0.5 g/t Au & 44.5 g/t Ag	Road access 12 months/year 100 km NE de Rouyn-Noranda	Large-Scale 76.5 km ²	Intermediary	Gold rich VMS	13.47gtAu/10.57m 4.92 gtAu/5.43m	Potential Option / JV partner
Mosseau	Urban-Barry corridor Kiaske fault	Morono M Zone 317 Kt @ 3.4 gtAu (Non 43-101, 1987)	Road access 12 months/year Near Lebel-sur-Quevillon	Large-Scale 49.7 km ²	Intermediary	Lode Gold Deposit Target	Historic resource 12.79gtAu/2.23m 1.13gtAu/14.5m 2.93gtAu/4.53m	Potential Option / JV partner
Vezza-Noyard	Douay-Casa Berardi corridor	Vezza Mine 261K oz @ 6.5 gtAu Maudore Minerals 2012	Road access 12 months/year 25 km south of Matagami	2.0 km ²	Intermediary	Lode Gold Deposit Target	Not drilled	Continuity at depth of Mine Trend

Urban-Barry & Laflamme Gold Corridors

DISTRICT-SCALE GOLD PROJECTS CONSOLIDATION IN ABITIBI



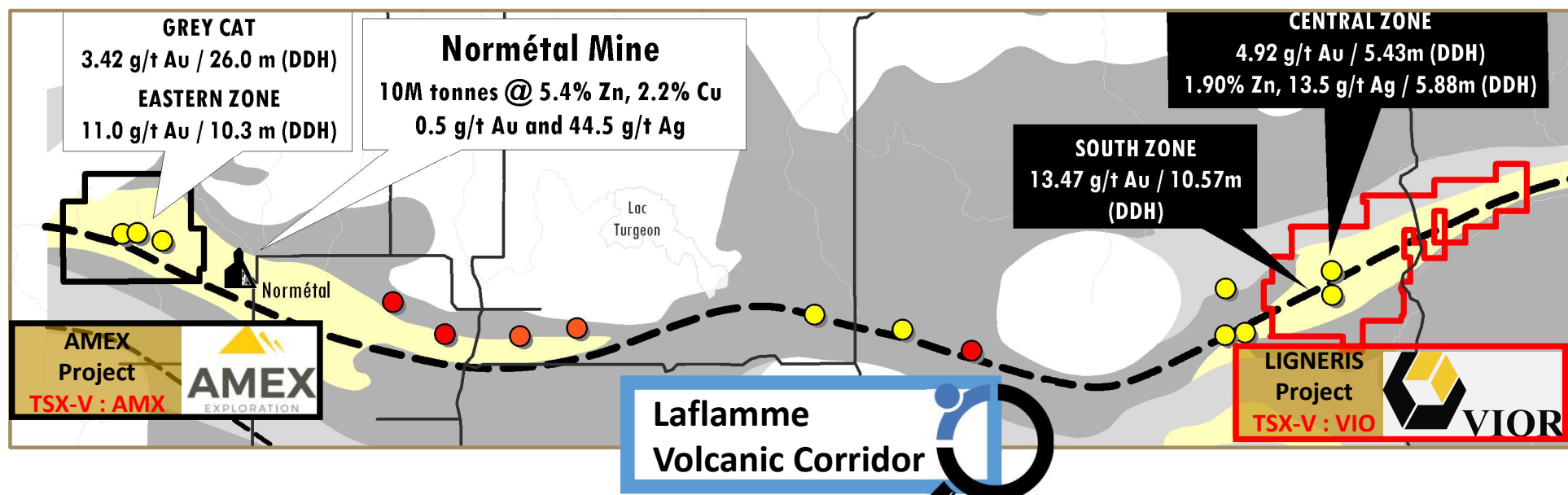
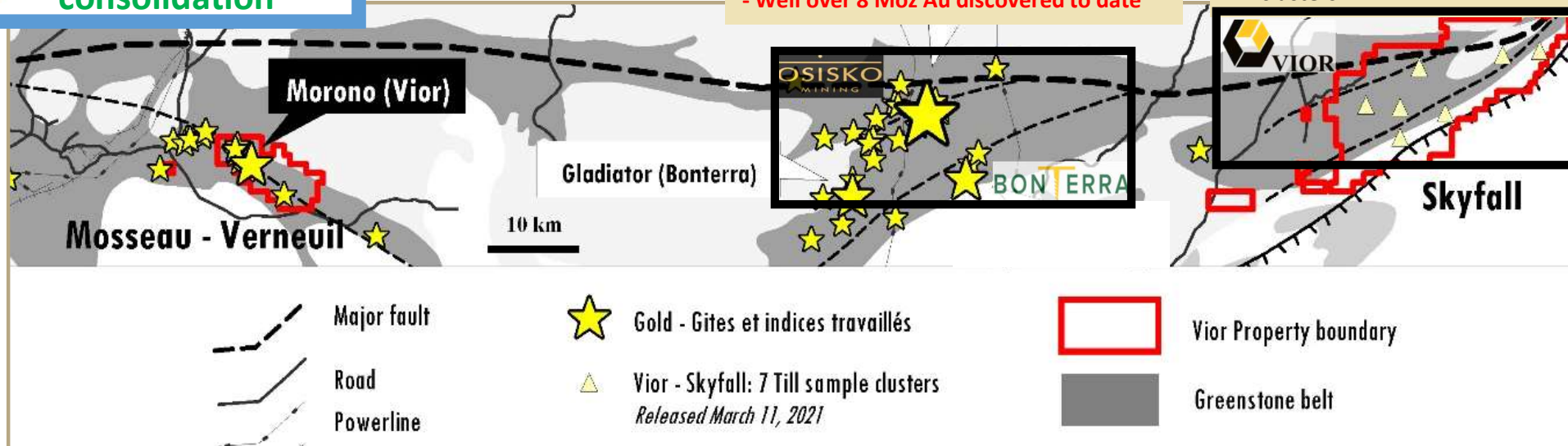
Urban-Barry gold consolidation

Windfall/Barry/Gladiator - Camp

- Well over 1 M metres drilled
- **Discovery of World Class High grade Gold deposits**
- Well over 8 Moz Au discovered to date

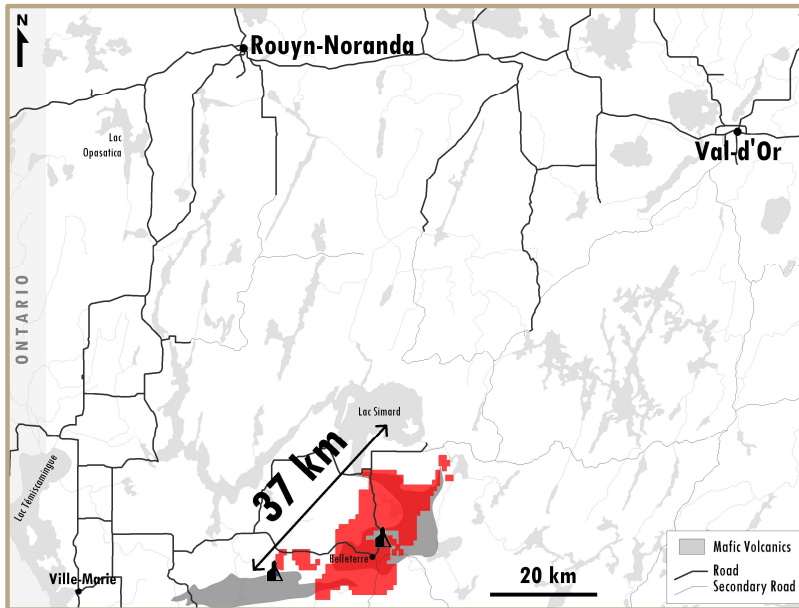
Skyfall - Camp

- No holes drilled
- Delineated 7 Till sample gold clusters



Belleterre Project – Flagship Gold Project

STRATEGIC DISTRICT-SCALE LAND POSITION



Location:

- Québec - Greenstone Belt

Past Producing Belt:

- Former High Grade Belleterre Gold Mine :
Over 750Koz Au @ 10.7g/t Au (Sigeom MERN)

Size:

- District-Scale – 37 km of Favorable Strike

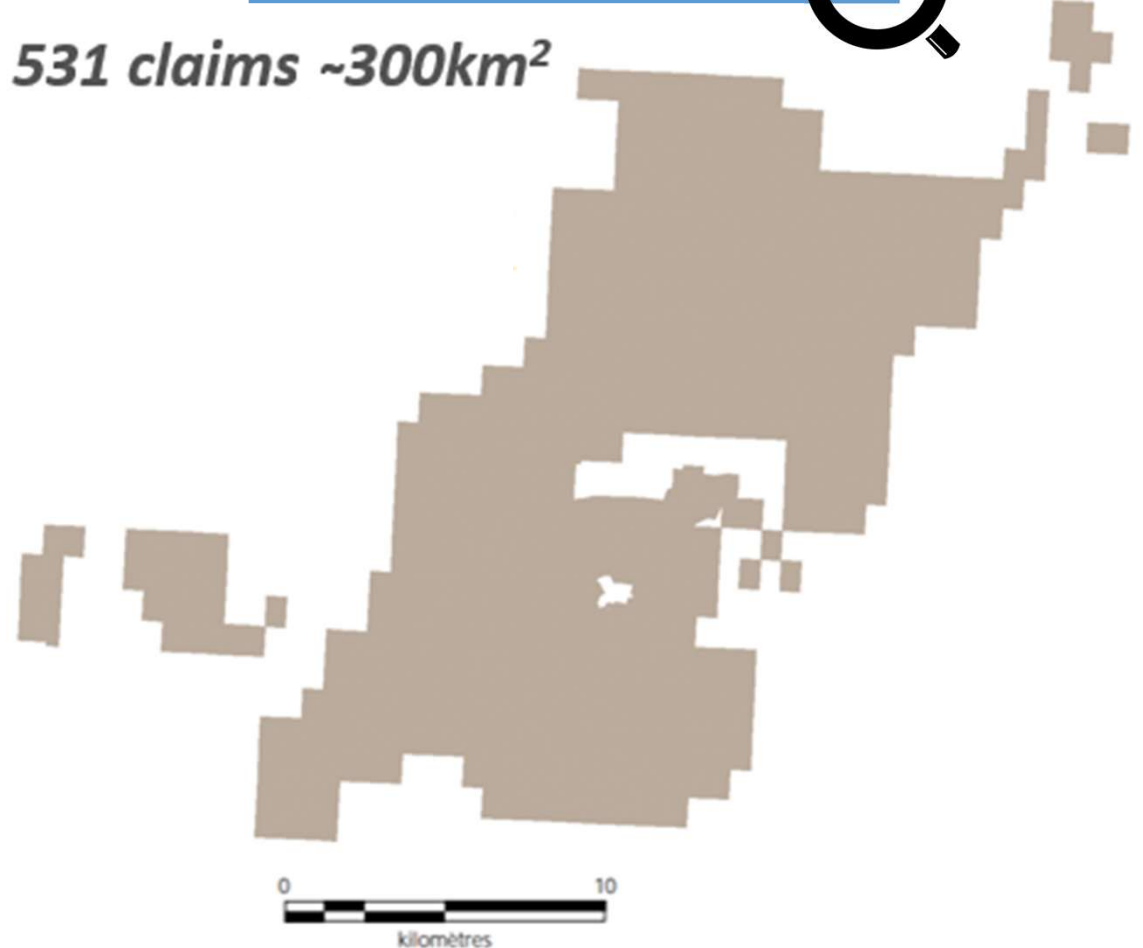
Opportunity:

- Has never been Consolidated or Explored with modern Techniques
- High-grade component of the belt
- Shallow drilling only

- Unique High-grade Potential
- Potential to develop to next stage quickly



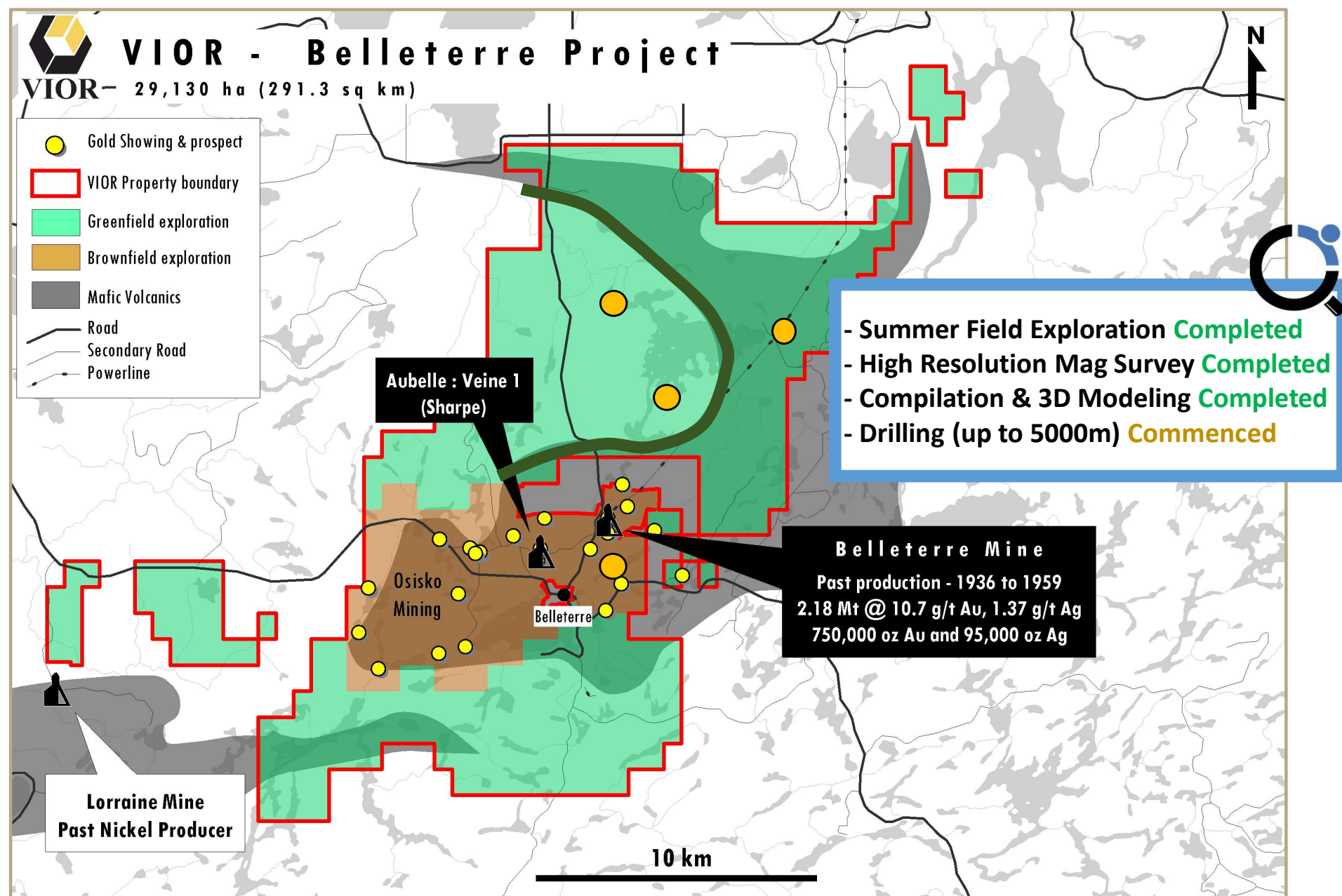
531 claims ~300km²



Belleterre Project - Gold



DISTRICT-SCALE LAND POSITION - VIOR LAND HOLDING CONSOLIDATION



Belleterre Project - Gold

HIGH GRADE GOLD SURFACE RESULTS – PRESS RELEASE SEP 17, 2021



Sample 656213
Jolette-Nord showing
121.3 g/t Au



Sample 656234
Aubelle-1 showing - QFP
1.2 g/t Au



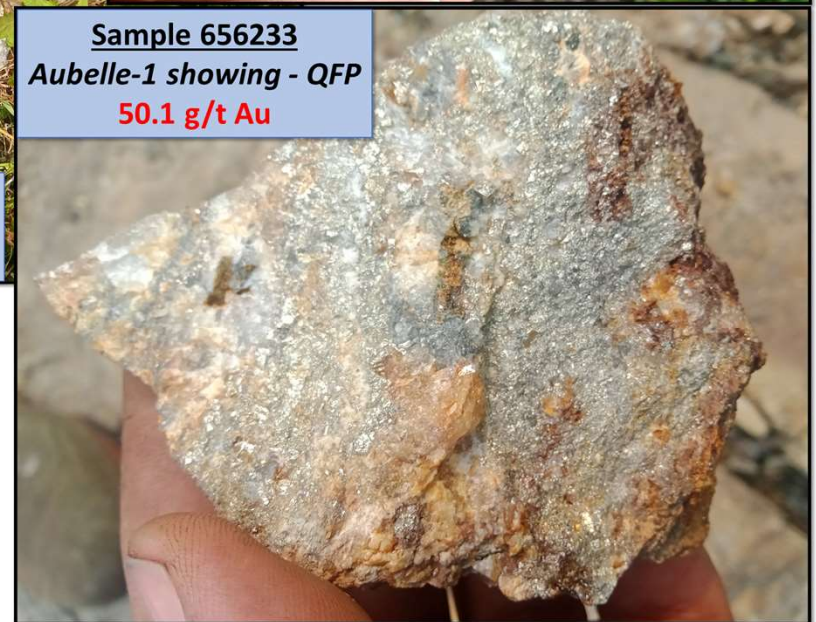
Sample 656214
Village showing
61.2 g/t Au



Sample 656207
Lac Expanse – Zone C showing
42.1 g/t Au



Sample 656221
Blasted boulder from Conway showing
274.9 g/t Au



Sample 656233
Aubelle-1 showing - QFP
50.1 g/t Au

Results 2021

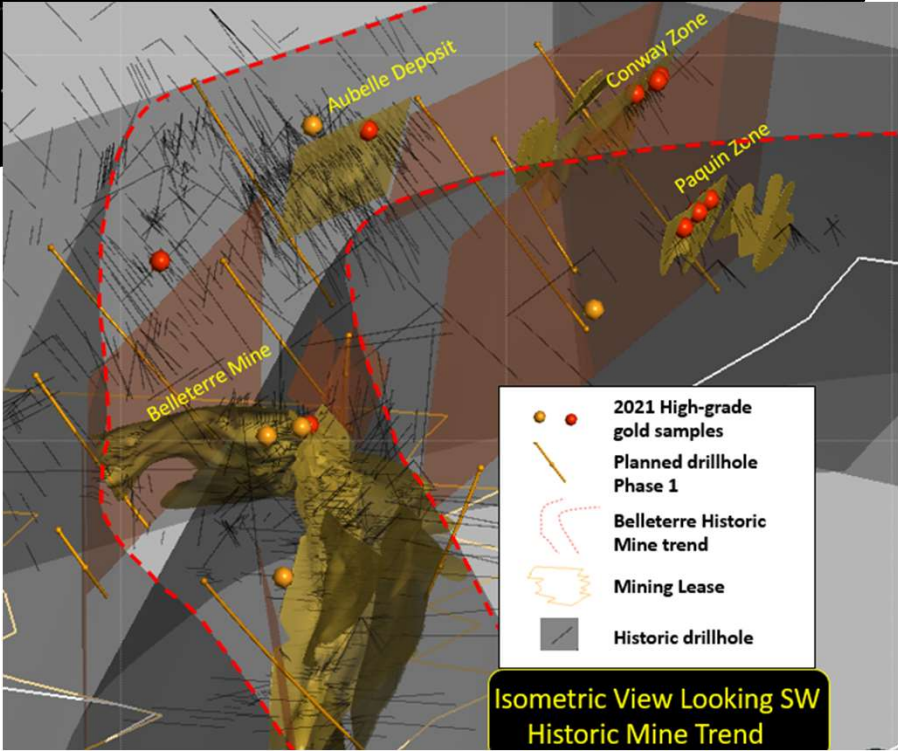
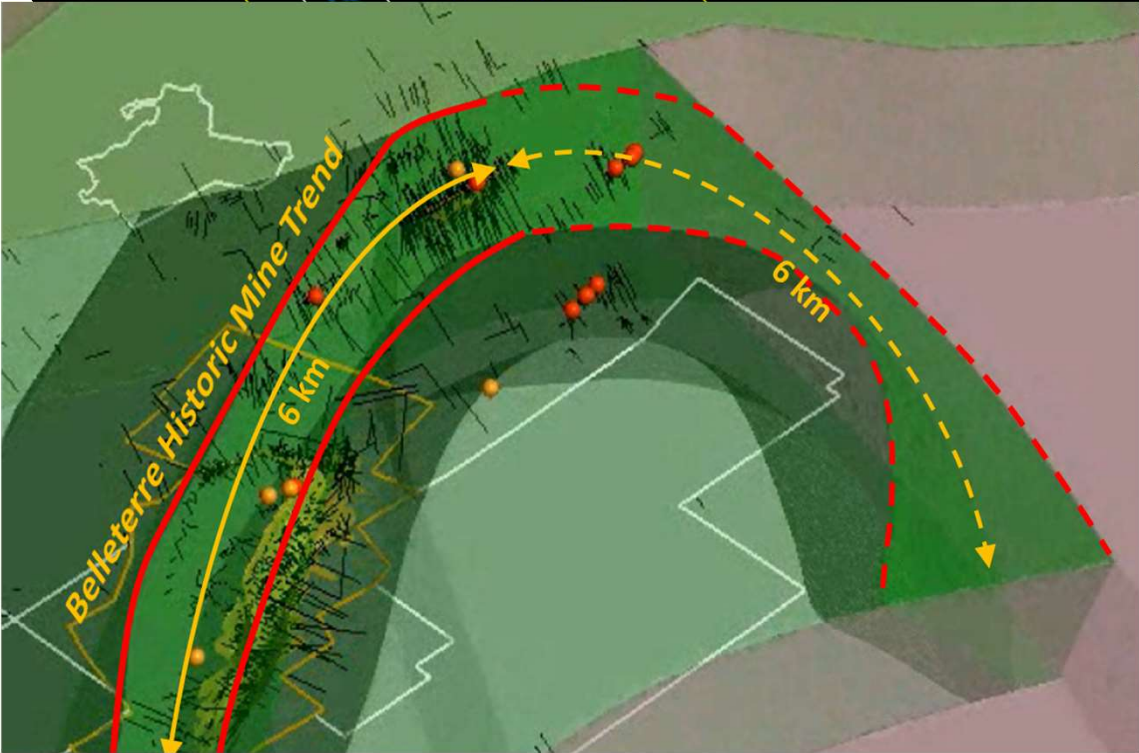
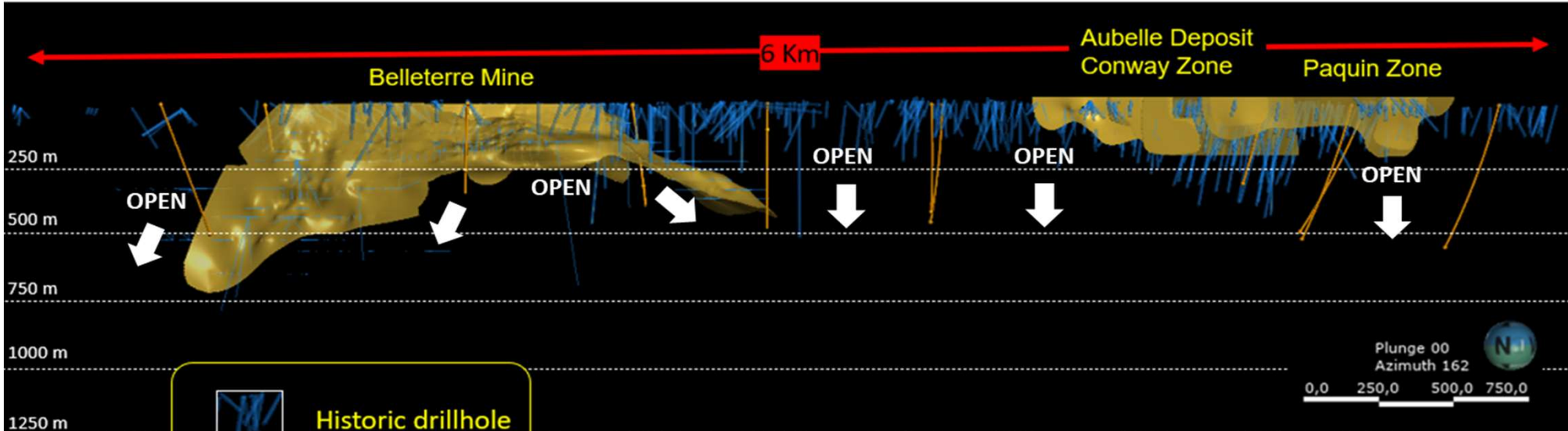
**High-grade Gold at
surface confirmed**



Belleterre Project - Gold

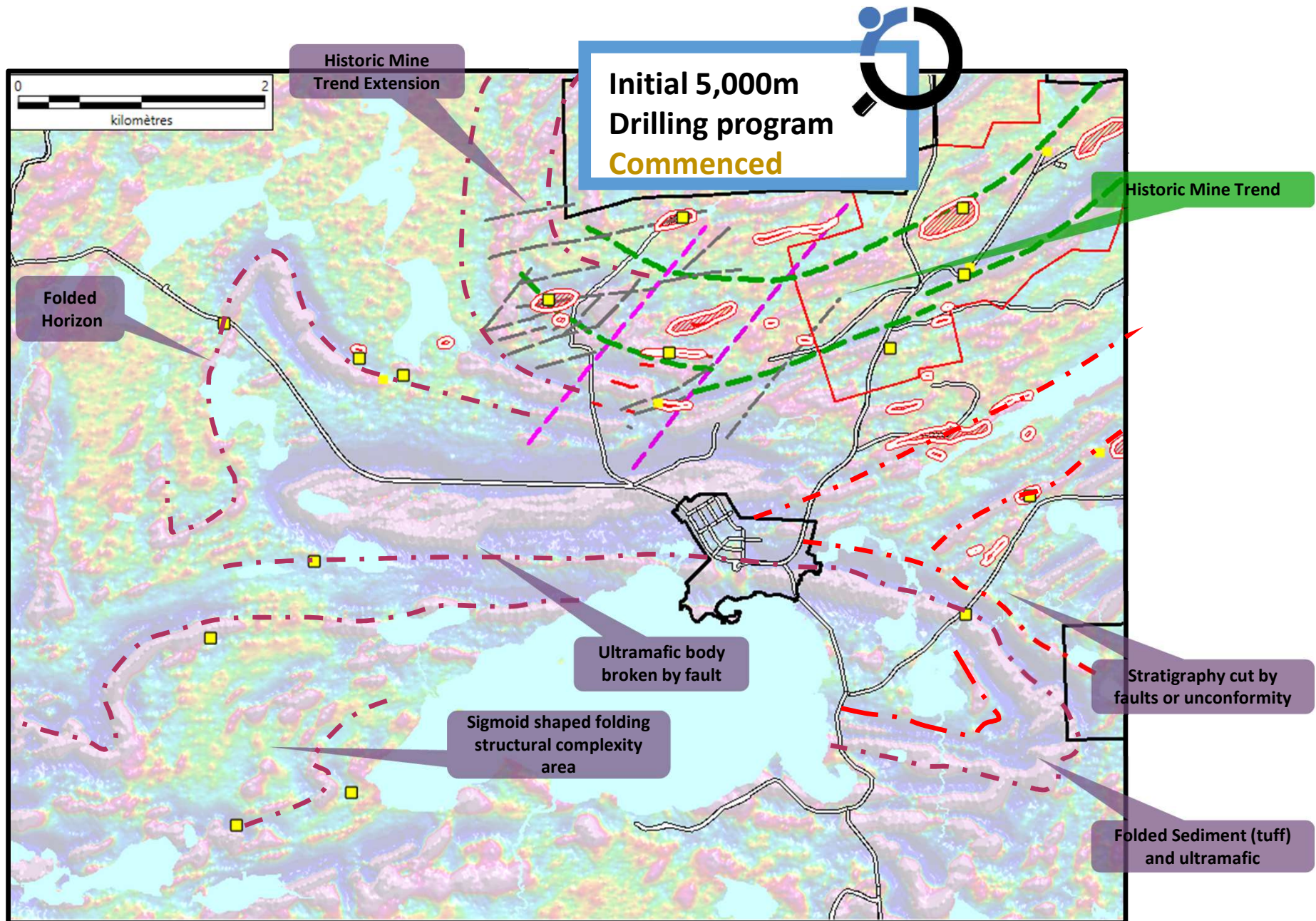


HISTORIC MINE TEND – BROWNFIELD INITIAL DRILLING PROGRAM PLANIFICATION



Belleterre Project - Gold

BROWNFIELD AREA – HIGH PROSPECTIVE DRILLING POTENTIAL



Vior Opportunity & Summary

- **Management Team**

Solid & Low-cost Corporate Structure - Large Insider ownership !!

- **Innovative Business Model**

Exposure to 9 promising Precious Metals Projects - Safe Jurisdictions

- **Osisko Mining Inc's Endorsement**

- ✓ Projects potential and;
- ✓ Corporate strategy & execution



- **Continuous News Flow** throughout the Year and into 2022:

- ✓ **Belleterre** - Rapidly developing *Brownfield Gold project*

Recent high grade rock samples up to 274.9 g/t Au

November 2021 - 5,000 m drilling

February 2022 - Potential additional 5,000 m drilling

- ✓ **Skyfall & Mosseau** - *Greenfield Gold project* - **Excellent Blue Sky Potential**
- ✓ **Ligneris** – *Intermediary gold project* – **Gold Rich VMS Target**

A white silhouette of a bull's head facing right, positioned to the left of the text.

TSXV - VIO
FRANKFURT - VL51



CONTACT

Mark Fedosiewich
mfedosiewich@vior.ca
+1 613 898 5052

vior.ca